



# UPDATE

## Academic Achievement of SASD

Middle School and High School Students

Jack Silva, Director of Secondary Education  
**Education-Personnel Committee Meeting**

February 4, 2009

# Goal of this presentation.....

---

- To provide the Board and the public a snapshot of **where SASD middle school students and high school students stand** on key indicators of academic performance. Identify areas of success on which to build, and areas of need to address.



# The Academic Measures....

---



- Reading Achievement: PSSA/PVAAS
- Math Achievement: PSSA/PVAAS
- Science Achievement: PSSA
- *Advanced Placement* Achievement: EEI
- Scholastic Aptitude: SAT
- College Readiness: MCCC college courses
- Prestigious Scholarships: National Merit Awards



# Reading Achievement—PSSA

---

- Annually measures the overall reading achievement/ability of 6<sup>th</sup>, 7<sup>th</sup>, 8<sup>th</sup> and 11<sup>th</sup> graders
- **Results:** Building upon the steady gains in reading achievement over the years.
- **Focus:** Plateaued *Advanced* readers in Grade 6 and Grade 11

# Growth in Reading Achievement—PVAAS

---

- Sometimes called a “growth model.”
- Shows if the average student is “making a year’s worth of reading gain over a year’s worth of time.”
- **Results:** All grades are meeting the goal; very high gains in Grades 7 and 11; gains in Grade 6 and 8
- **Focus:** Growth in Grade 8; Expanded time and intervention for language arts in Grade 8.

# Math Achievement—PSSA

---

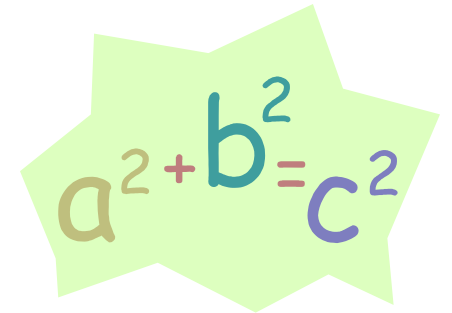


- Annual measures the overall math achievement/ability of 6<sup>th</sup>, 7<sup>th</sup>, 8<sup>th</sup> and 11<sup>th</sup> graders
- **Results:** building upon steady overall gains in math achievement over the years.
- **Focus:** Continued/expanded focus on the formative assessment and co-teaching of the IEP subgroup in Grade 8 and Grade 11. More time and flexibility for middle level math instruction.

# Growth in Math Achievement—PVAAS

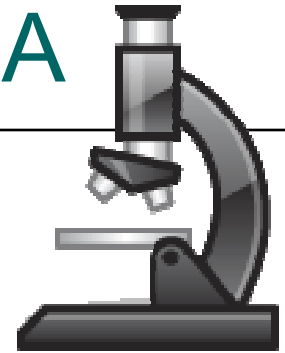
---

- Overall, data show that the average student is “making a year’s worth of math gain over a year’s worth of time.”
- **Results:** very high gains in Grade 6 and Grade 7; “Role Model” gains in Grade 11; growth is “slipping” in Grade 8
- **Focus:** Growth in Grade 8; apply greater time, focus, and strategies that are working in Grade 11 to Grade 8.



# Science Achievement—PSSA

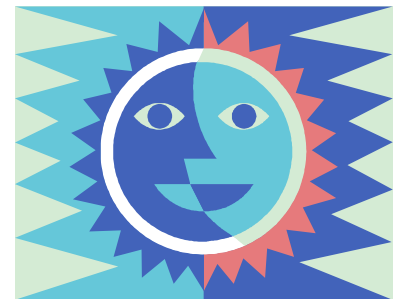
---



- First year of annually measuring the overall science achievement/ability of 8<sup>th</sup> and 11<sup>th</sup> graders.
- **Results:** Poor results across the state, not-so-hot results in SASD secondary schools; SASD results comparable to neighboring school districts; difficult to draw conclusions from a first year of testing
- **Focus:** Examine science curriculum, align curriculum to PDE's assessment anchors, increase formative assessment; expand time for middle school science

# Advanced Placement—Equity & Excellence

- End of Course examination given by the College Board
- Scores: range from 1-not qualified to 5-Extremely well qualified
- **Results:** maintaining high achievement and increasing participation; All APEE Index scores improving
- **Focus:** Continue implementing action steps from the AP Program Evaluation: better identify “AP Potential” in students; increase recruitment



# Scholastic Aptitude—SAT

---

- Given annually by the College Board to juniors (primarily) to assess their likelihood of success in College
- Aptitude test vs. Achievement test—different purposes
- **Results:** SASD scores higher than national and state averages; 2008 saw SASD improvement in all three areas of the test: reading, writing, and math; significant decline in male test takers.
- **Focus:** Find out why our boys abandoned the SAT?

# College Readiness—MCCC Data

---

- What percentage of the incoming freshmen can go right into a college course vs. the percentage that require remediation?
- **Results:** SASD students are improving in math, holding steady in Reading, and slipping in English in terms of their readiness for college courses compared to the other students at the MCCC.
- **Focus:** Why are our graduates requiring intervention in English? Who are they? Make adjustments to regular education English curriculum and ESL program accordingly.



# National Merit Scholarship

---

- National recognition from the College Board based upon the student's extremely high performance on the PSAT (10<sup>th</sup> grade primarily) and subsequent application.
- **Results:** No significant change in the number of SASD commended students or finalists