

# Understanding Your 2009 PSAT Score Report

## 2009 Score Report *Plus*

# PSAT/NMSQT®

Preliminary SAT/National Merit Scholarship Qualifying Test

### INSIDE

- See your scores
- Review your answers
- Improve your skills
- Check your entry to NMSC scholarship programs
- Get information about your college major

### OUTSIDE

- Understand your scores
- Learn about NMSC scholarship programs
- Find out about college planning resources, including online SAT® preparation

### WHAT'S NEXT?

#### Plan Your Next Steps with My College QuickStart™

- Log in to your FREE college and career planning kit at [www.collegeboard.com/quickstart](http://www.collegeboard.com/quickstart)
- Access answer explanations, a personalized SAT study plan, and information about colleges, majors, and careers that are right for you

#### Register for the SAT

- If you are a junior, learn more about the SAT at [www.collegeboard.com](http://www.collegeboard.com)
- Register through My College QuickStart using Express SAT Sign-up

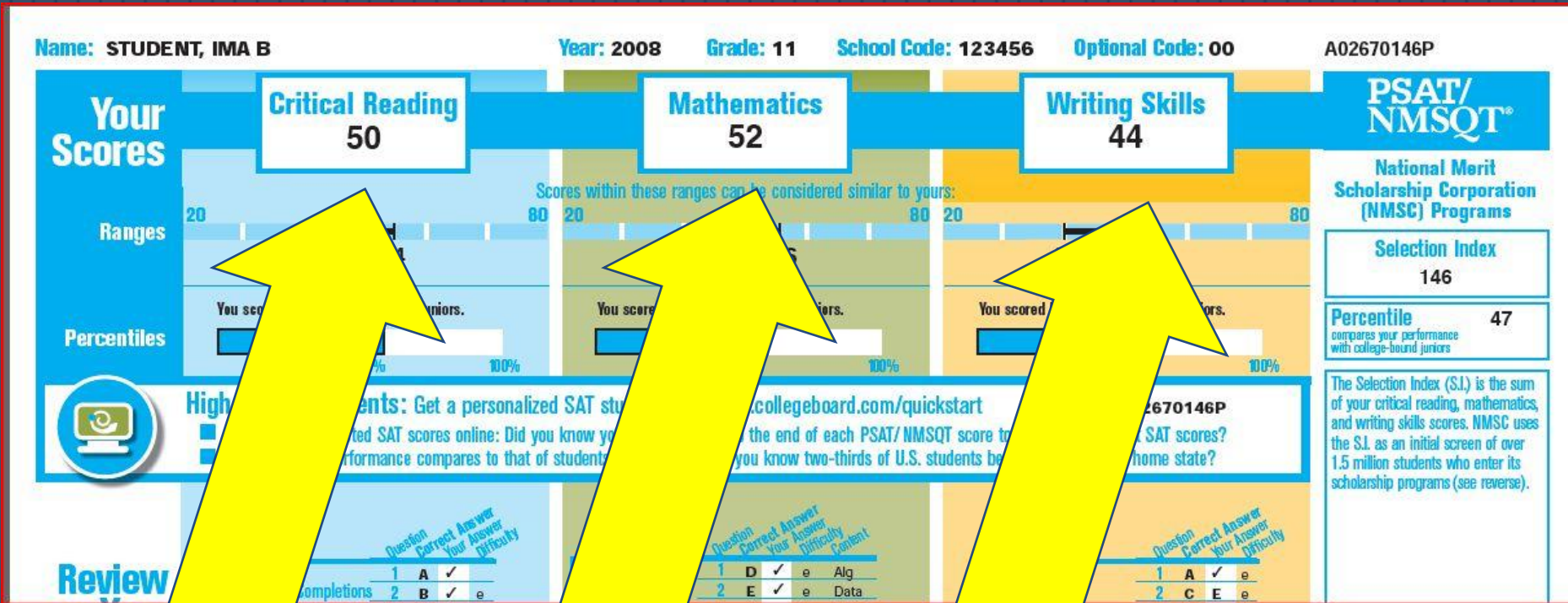


Preliminary SAT/National Merit Scholarship Qualifying Test  
cosponsored by

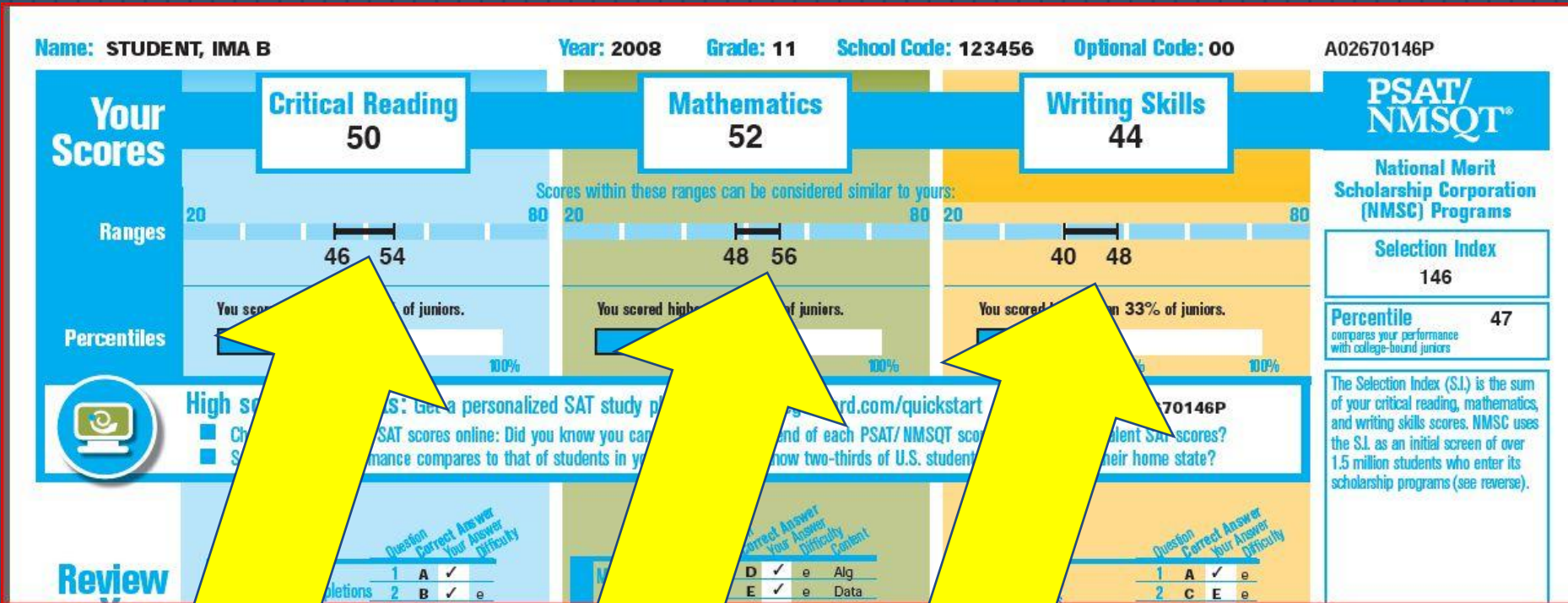


NATIONAL MERIT  
SCHOLARSHIP CORPORATION

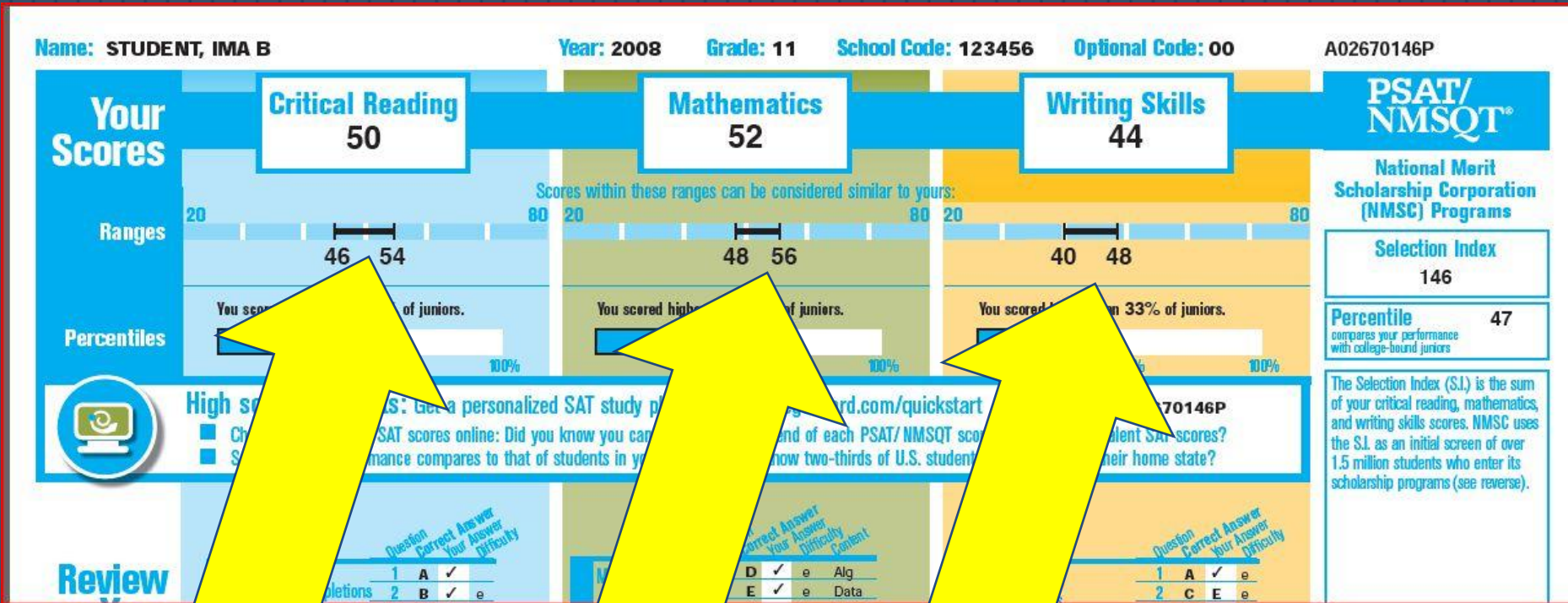
# What is my PSAT Score and What Does it Mean?



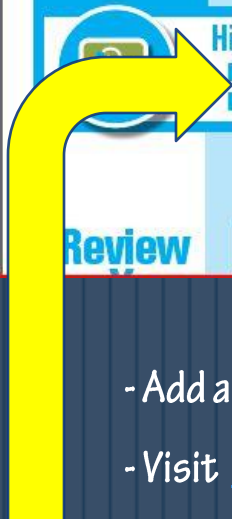
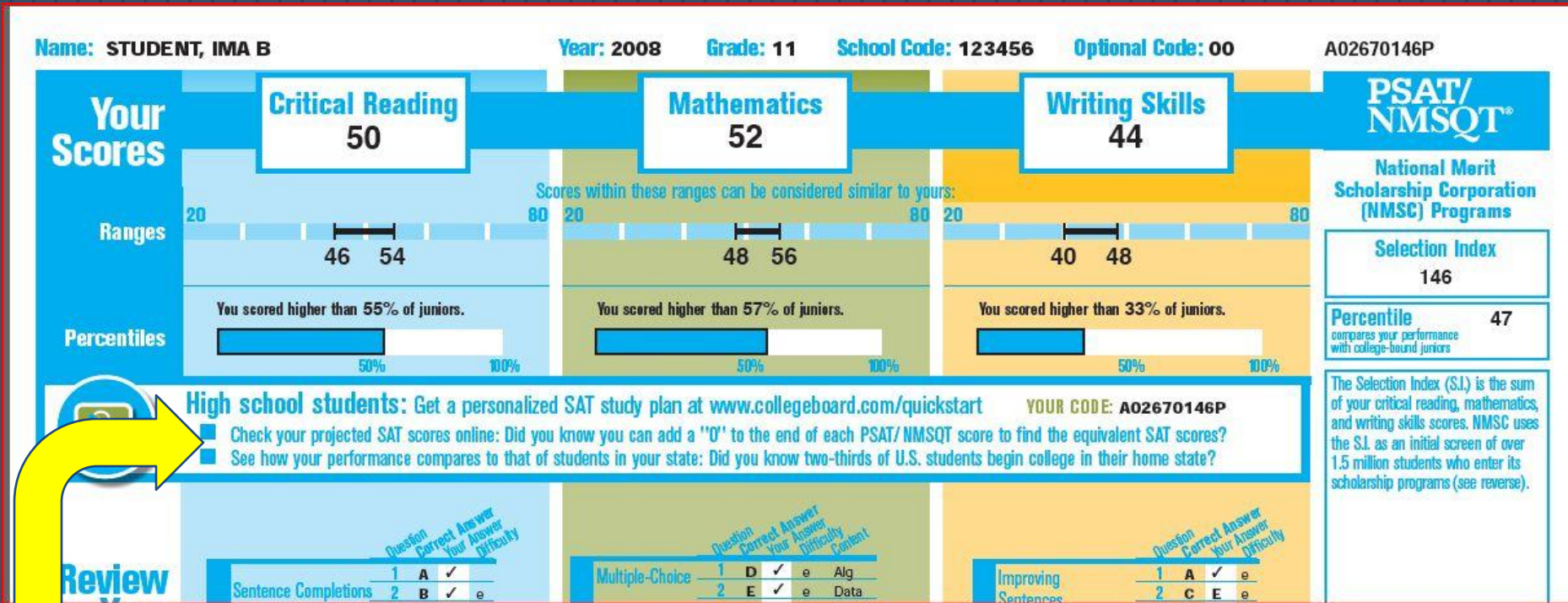
# What is my PSAT Score and What Does it Mean?



# What is my PSAT Score and What Does it Mean?



# What is my PSAT Score and What Does it Mean?



- Add a "0" to see what your SAT score would look like
- Visit [www.collegeboard.com/quickstart](http://www.collegeboard.com/quickstart) and enter your code for valuable SAT information

Correct answer

## Review Your Answers

Ask for your test book back so you can see the questions.

### Key

✓	Correct
o	Omitted
u	Unscorable
e	Easy
m	Medium
h	Hard
Alg	Algebra & Functions
Data	Data Analysis, Statistics & Probability
Geom	Geometry & Measurement
Num	Number & Operations

	Question	Correct Answer	Your Answer	Difficulty	
SECTION 1	Sentence Completions	1	A	✓	
		2	B	✓	e
		3	A	C	m
		4	C	A	h
		5	B	E	h
		6	D	✓	e
		7	B	✓	m
		8	D	o	e
SECTION 2	Passage-Based Reading	9	B	✓	m
		10	E	B	h
		11	D	✓	h
		12	C	✓	m
		13	A	✓	m
		14	B	A	m
		15	A	✓	e
		16	C	✓	m
	17	A	✓	e	
	18	E	✓	m	
	19	B	✓	m	
	20	B	E	m	
	21	E	✓	m	
	22	D	B	h	
	23	E	✓	m	
	24	A	✓	m	
SECTION 3	Sentence Completions	25	D	✓	m
		26	D	✓	e
		27	D	✓	e
		28	A	✓	e
	Passage-Based Reading	29	C	✓	e
		30	D	E	m
		31	A	B	h
		32	E	✓	h
		33	B	A	h
		34	D	✓	e
		35	A	✓	e
		36	E	A	e
		37	C	✓	m
		38	B	✓	m
		39	B	C	h
		40	C	A	h
		41	B	✓	h

Your answer:

-a check mark means you answered the question correctly

-A letter in this column indicates an incorrect answer that you gave

- An "o" means you omitted the question

## Review Your Answers

Ask for your test book back so you can see the questions.

### Key

✓	Correct
o	Omitted
u	Unscorable
e	Easy
m	Medium
h	Hard
Alg	Algebra & Functions
Data	Data Analysis, Statistics & Probability
Geom	Geometry & Measurement
Num	Number & Operations

	Question	Correct	Your Answer	Difficulty
SECTION 1	Sentence Completions			
	1	A	✓	
	2	B	✓	e
	3	A	C	m
	4	C	A	h
	5	B	E	h
	6	D	✓	e
	7	B	✓	m
8	D	o	e	
SECTION 2	Passage-Based Reading			
	9	B	✓	m
	10	E	B	h
	11	D	✓	h
	12	C	✓	m
	13	A	✓	m
	14	B	A	m
	15	A	✓	e
	16	C	✓	m
	17	A	✓	e
	18	E	✓	m
	19	B	✓	m
	20	B	E	m
	21	E	✓	m
	22	D	B	h
	23	E	✓	m
24	A	✓	m	
SECTION 3	Sentence Completions			
	25	D	✓	m
	26	D	✓	e
	27	D	✓	e
	28	A	✓	e
	29	C	✓	e
	Passage-Based Reading			
	30	D	E	m
	31	A	B	h
	32	E	✓	h
	33	B	A	h
	34	D	✓	e
	35	A	✓	e
	36	E	A	e
	37	C	✓	m
	38	B	✓	m
	39	B	C	h
40	C	A	h	
41	B	✓	h	

Difficulty level of the question

## Review Your Answers

Ask for your test book back so you can see the questions.

### Key

✓	Correct
o	Omitted
u	Unscorable
e	Easy
m	Medium
h	Hard
Alg	Algebra & Functions
Data	Data Analysis, Statistics & Probability
Geom	Geometry & Measurement
Num	Number & Operations

	Question	Correct Answer	Your Answer	Difficulty	
SECTION 1	Sentence Completions	1	A	✓	
		2	B	✓	e
		3	A	C	m
		4	C	A	h
		5	B	E	h
		6	D	✓	e
		7	B	✓	m
		8	D	o	e
SECTION 2	Passage-Based Reading	9	B	✓	m
		10	E	B	h
		11	D	✓	h
		12	C	✓	m
		13	A	✓	m
		14	B	A	m
		15	A	✓	e
		16	C	✓	m
	Sentence Completions	17	A	✓	e
		18	E	✓	m
		19	B	✓	m
		20	B	E	m
		21	E	✓	m
		22	D	B	h
		23	E	✓	m
		24	A	✓	m
SECTION 3	Passage-Based Reading	25	D	✓	m
		26	D	✓	e
		27	D	✓	e
		28	A	✓	e
		29	C	✓	e
		30	D	E	m
		31	A	B	h
		32	E	✓	h
	Sentence Completions	33	B	A	h
		34	D	✓	e
		35	A	✓	e
		36	E	A	e
		37	C	✓	m
		38	B	✓	m
		39	B	C	h
		40	C	A	h
		41	B	✓	h

How did you score?

### Scoring

- Correct answer = PLUS 1 POINT.
- Omitted answers = NO POINTS.
- Wrong answers to multiple-choice questions = MINUS ¼ POINT.
- Wrong answers to math questions 28-38 = NO LOST POINTS.

Points are totaled, then converted to scores on the 20-80 scale.

SECTION 1

35	A	✓	e
36	E	A	e
37	C	✓	m
38	B	✓	m
39	B	C	h
40	C	A	h
41	B	✓	h
42	C	E	m
43	E	✓	m
44	C	✓	m
45	D	B	m
46	A	B	m
47	C	E	e
48	E	A	m

You answered correctly **29** of 48 critical reading questions and earned **29** points.

**11** of **14** easy questions

**15** of **23** medium questions

**3** of **11** hard questions

You omitted **1** question(s).

You answered incorrectly **18** question(s) and lost **5** point(s).



VIEW PSAT/NMSQT questions and answers

## Improve Your Skills

The skills listed are based on *your individual performance* on the test and represent those that you have the best chance to improve with extra work.

Follow the suggestions to improve in each area.

### ■ Determining an author's purpose or perspective

**How to improve:** Authors write for a variety of purposes, such as to inform, to explain, or to convince. When you read, try to determine why the author wrote what he or she wrote.

See questions 20, 42, 48.

### ■ Understanding complex sentences

**How to improve:** Ask your English teacher to recommend books that are a bit more challenging than those you're used to reading. Practice breaking the sentences down into their component parts to improve your comprehension. Learn how dependent clauses and verb phrases function in sentences.

See questions 5, 33.

### ■ Understanding sentences that deal with scientific ideas

**How to improve:** Read magazine articles about scientific subjects to improve your comfort level in this area.

See questions 8, 36.

How can you improve?

### Scoring

- Correct answer = PLUS 1 POINT.
- Omitted answers = NO POINTS.
- Wrong answers to multiple-choice questions = MINUS ¼ POINT.
- Wrong answers to math questions 28-38 = NO LOST POINTS.

Points are totaled, then converted to scores on the 20-80 scale.

SECTION 1

35	A	✓	e
36	E	A	e
37	C	✓	m
38	B	✓	m
39	B	C	h
40	C	A	h
41	B	✓	h
42	C	E	m
43	E	✓	m
44	C	✓	m
45	D	B	m
46	A	B	m
47	C	E	e
48	E	A	m

You answered correctly **29** of 48 critical reading questions and earned **29** points.

**11** of **14** easy questions

**15** of **23** medium questions

**3** of **11** hard questions

You omitted **1** question(s).

You answered incorrectly **18** question(s) and lost **5** point(s).



VIEW PSAT/NMSQT questions and answers

## Improve Your Skills

The skills listed are based on *your individual performance* on the test and represent those that you have the best chance to improve with extra work.

Follow the suggestions to improve in each area.

### ■ Determining an author's purpose or perspective

**How to improve:** Authors write for a variety of purposes, such as to inform, to explain, or to convince. When you read, try to determine why the author wrote what he or she wrote.

See questions 20, 42, 48.

### ■ Understanding complex sentences

**How to improve:** Ask your English teacher to recommend books that are a bit more challenging than those you're used to reading. Practice breaking the sentences down into their component parts to improve your comprehension. Learn how dependent clauses and verb phrases function in sentences.

See questions 5, 33.

### ■ Understanding sentences that deal with scientific ideas

**How to improve:** Read magazine articles about scientific subjects to improve your comfort level in this area.

See questions 8, 36.

# What is PSAT/NMSQT???

A02670146P

**PSAT/  
NMSQT<sup>®</sup>**

**National Merit  
Scholarship Corporation  
(NMSC) Programs**

**Selection Index**

**146**

**Percentile**

**47**

compares your performance  
with college-bound juniors

The Selection Index (S.I.) is the sum of your critical reading, mathematics, and writing skills scores. NMSC uses the S.I. as an initial screen of over 1.5 million students who enter its scholarship programs (see reverse).

**Entry Requirements**

Below is information you provided on your answer sheet.

Full-time high school student:

**Yes**


Year to complete high school and enroll full time in college:

**2010**

# My College QuickStart™

## Sign In

You can use the access code on your official PSAT/NMSQT® paper score report to sign in at [collegeboard.com/quickstart](http://collegeboard.com/quickstart).

for Students

---


### Sign in to Your College QuickStart

Account Help

---

Enter the access code found on your official PSAT/NMSQT® paper score report to connect to My College Quickstart- it's free.

Zachary Preston  
zpreston@hs.com  
[Update My Info](#) | [Sign Out](#)



**Your 2006 PSAT/NMSQT Access Code:**

SUBMIT

[Where do I find this code on my paper score report?](#)

[Click here to connect without a code](#)

[Cancel](#)

**Don't have your paper score report?**

- If you haven't received your report yet, ask your counselor when it will be handed out at your school.
- If you've lost your report, ask your counselor for a copy or connect without a code.

# My College QuickStart™

For PSAT/NMSQT® test-takers only, My College QuickStart uses your test results to power these personalized tools:

- An online score report
- A customized SAT study plan
- College, major, and career matches

All you need is the access code printed on your official paper score report.

## My College QuickStart

[Home](#) > [My Organizer](#) > My College QuickStart

### Personalized Planning

[Help ?](#)

Welcome to My College QuickStart™, your free personalized planning kit, Zachary Preston. When you took the Preliminary SAT®/National Merit Scholarship Qualifying Test (PSAT/NMSQT®), you took an important step toward college. Now take the next steps with My College QuickStart.

**Zachary Preston**

[zpreston@hs.com](mailto:zpreston@hs.com)

[Update My Info](#) | [Sign Out](#)

#### My SAT Study Plan

Review **18** missed PSAT/NMSQT questions.

#### My Online Score Report

Detailed results for **critical reading, mathematics, and writing.**

View:

- State and national percentiles
- Projected SAT score ranges
- Complete answer explanations
- Answers sorted by type and difficulty

#### My College Matches

Check out a starter list of **10** suggested colleges.

#### My Major & Career Matches

Explore **Electrical Engineering** and more.

# Quick Start - Score Report Online

## View Questions

Just click to view each question, its answer, and answer explanation. Passage-based reading questions also include the relevant passages.

Question Type	Question	Correct Answer	Your Answer	Difficulty
<b>Section 1</b>				
Sentence Completions	1 <a href="#">view</a>	A	✓	
	2 <a href="#">view</a>	C	D	Hard
Passage-Based Reading	3 <a href="#">view</a>	D	✓	Medium
	4 <a href="#">view</a>	C	D	Easy

CollegeBoard
Close

---

### Critical Reading: Question 3

**This question is based on the following reading passages:**

- [Read Passage 1](#)
- [Read Passage 2](#)

---

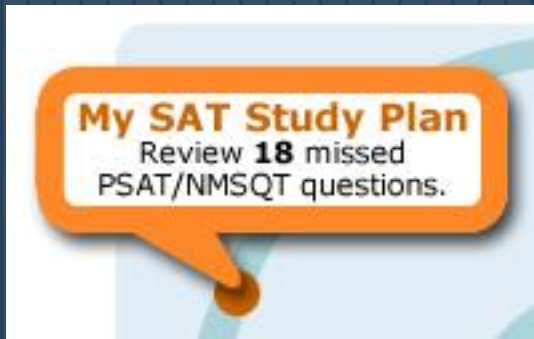
Which of the following best describes the difference between Passages 1 and 2?

- A. Passage 1 remembers an event with fondness, while Passage 2 recalls a similar event with bitter detachment.
- B. Passage 1 considers why the author responded to the visit as he did, while Passage 2 supplies the author's reactions without further analysis.
- C. Passage 1 relates a story from a number of different perspectives, while Passage 2 maintains a single point of view.
- D. Passage 1 treats the visit to the theater as a disturbing episode in the author's life, while Passage 2 describes the author's visit as joyful.
- E. Passage 1 recounts a childhood experience, while Passage 2 examines how a similar experience changed over time.

⊞ Show Answer Explanation

For the sole use of the person for whom this report has been provided. Not for duplication or distribution.

Copyright © 2006 collegeboard.com, Inc.



Prepare for the SAT® Make the most of your PSAT/NMSQT® results with your own customized SAT study plan. Among My SAT Study Plan's many tools, you'll find:

- Skills to improve, chosen especially for you
- SAT practice questions
- An official SAT practice test complete with score report

## My SAT Study Plan

Study Plan Home Meet the SAT Critical Reading Mathematics Writing Practice Test

### Zachary, welcome to your personalized SAT Study Plan!

Congratulations on taking the PSAT/NMSQT®. It's an excellent way to get to know the SAT. Most college-bound students take the SAT in the spring of their junior year, and many take it again in the fall of their senior year. For now, concentrate on long-term preparation:

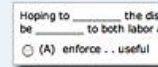
- Take challenging high school courses
- Write as often as possible
- Read as much as you can
- Use this study plan to set long-term goals

#### Meet the SAT

- Question Types
- Time Allotted

	Critical Reading	Mathematics
Question Type	Sentence completion (19) Passage-based reading (48)	Multiple Choice (44) Student-produced responses (10)

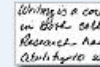
#### Prepare for Critical Reading



#### Prepare for Mathematics



#### Prepare for Writing



- Skills to improve, based on your PSAT/NMSQT results
- SAT practice questions
- Explanations for PSAT/NMSQT questions you missed
- Test-taking approaches

#### Take an Official SAT Practice test

- Personalized, detailed score report
- Answer Explanation

2	YOUR NAME	3	DATE OF BIRTH	5	SEX
	Last Name (Print Letters) First Name (Print Letters)		Month Year Day		Female Male

Get Started >

## My College Matches

Check out a starter list of **10** suggested colleges.

### Jump-Start Your Search

Get a list of colleges before you even begin to search. My College Matches lists colleges that match your preferred major and current location.

## My College Matches

[Help ?](#)

Here are some colleges that might interest you, based on your PSAT/NMSQT® information.

Check or uncheck preferences to change your search and visit [College MatchMaker](#) to conduct a full search with more choices. Click on a college's name to view its College Search profile.

### Search Criteria

#### Location

- New York
- Mid-Atlantic Region
- Entire U.S.

[More location options](#)

#### Majors

- Major: Computer engineering, intervention and treatment professions

[More majors](#)

#### Admission [What's This?](#)

- Projected SAT scores:  
SAT Critical Reading midrange: 460-560  
SAT Math midrange : 460-560
- Include colleges that do not report SAT scores

[More admission options](#)

#### Size

- Small (fewer than 2,000 students)
- Medium (2,000-15,000 students)
- Large (more than 15,000 students)

[More campus life options](#)

[Search Again](#)

### Search Results

[Save This Search](#)

[My Saved Searches](#)

10 Matches Found

[Print Results](#)

[City University of New York: LaGuardia Community College](#)

Long Island City, NY

[City University of New York: Lehman College](#)

Bronx, NY

[Daemen College](#)

Amherst, NY

[Previous](#)

Result Pages: 1 2 3... 66

[Next](#)

#### Zachary Preston

zpreston@hs.com

[Update My Info](#) | [Sign Out](#)

#### Express SAT® Sign-Up

You've been pre-registered — just sign in and you're on your way.

#### My Road

Look to your future with in-depth profiles on majors, careers, and your personality type.

#### College QuickFinder

Looking for more criteria, like [cost](#), [distance from home](#), or [sports](#)?

Find these and more with [College MatchMaker](#).

[Tell us what you think of My College Matches](#)

**MyRoad**



**INSIGHTS**

Learn more about MyRoad, your interactive planning tool, featuring:

- A personality test
- Majors & careers
- An online magazine

[Go to MyRoad](#)



**CollegeBoard.com** **MyRoad**

**INSIGHTS** **I.D. ME** **EXPLORE MAJORS** **FIND A COLLEGE** **RESEARCH CAREERS** **MY PLAN**

[Student Voices](#) [Mentor Interviews](#) [Campus View](#) [Resource Library](#) [Hot Topics](#)

Find out about your personality type and learning style. | Learn about areas of study and college classes. | Search for schools that have what you're looking for. | Discover new possibilities and hear from the pros. | Track your growing interests and successes.

**Sign In**

User Name:

Password:

[Forgot Password?](#) [Sign In](#)

**Welcome to MyRoad™**

collegeboard.com's college and career planning Web site

[MyRoad is free for PSAT/NMSQT test-takers.](#)

- Take a validated personality assessment to get a detailed report on your personality type
- Explore a list of suggested careers and majors that fit your personality and strengths
- Search for colleges by location, major, cost, and much more
- Find out what students and professionals have to say about their choices
- Get tips on applying to college and succeeding in high school and beyond
- Create an online portfolio for college and career planning

[Sign Up Today](#) [Find Out More](#)

**Counselors**

User Name:

Password:

[Forgot Password?](#) [Sign In](#) [More Info](#)

*Experience MyRoad™*

*My Major & Career Matches opens the door to MyRoad. This interactive website includes:*

- Major and career profiles
- Firsthand stories from students and professionals
- A personality test

## How Did You Do?

Are you in tenth grade? Yes? Then relax. The PSAT/NMSQT shows skills you've learned and skills you may still need to work on before you go to college. It does not expect you to perform as well as students in eleventh grade, and you still have time to learn and improve.

-If the test seemed hard, remember—it's aimed at students in the eleventh grade.

-How developed are your academic skills? Use your PSAT/NMSQT Score Report to find out.

-Learn how to "guess" wisely.

-Use My College QuickStart™ to get ready for college.

-Prepare for the next time you take the PSAT/NMSQT.

## What Should you Do Now?

Are you in eleventh grade? The PSAT/NMSQT shows skills you've learned and skills you may still need to work on before you take the SAT.

-Review your test and use the online "QuickStart" information to prep for the SAT's.

-Learn how to "guess" wisely.

- Register for the SAT I in the spring at [www.collegeboard.com](http://www.collegeboard.com) (March 13, May 1 – will be held at SAHS, June 5)

-Meet with your counselor to start your post-high school planning

If you have any additional questions,  
please see your counselor!