

LEA Name : Souderton Area SD  
Address : 760 Lower Road  
Souderton , PA 18964

County : Montgomery  
AUN Number : 123467103  
LEA Type : SD

**Annual Financial Report**  
**Accuracy Certification Statement**

For Fiscal Year Ending

**6/30/2021**

Pennsylvania Department of Education

&

Office of Comptroller Operations

PDE-2056: Intermediate Unit

PDE-2057: School District, AVTS/CTC, Charter School,  
and Special Program Jointure

**CERTIFICATION: By signing this page I agree that the electronic data submitted is a complete and accurate statement of the financial operations and status of the local education agency for the fiscal year. It has been prepared in accordance with generally accepted accounting principles and established Commonwealth of PA reporting guidelines.**



Chief School Administrator Signature

Date

11/9/21



Board Secretary Signature

Date

11/9/21

Sandra Kassel

Contact Person

skassel@soudertonsd.org

Contact Person E-mail Address

(215)723-6061

Ext :

Contact Person Telephone Number

(215)723-8897

Contact Person Fax Number

**Audit Certification**  
**Annual Financial Report:**  
For Fiscal Year Ending **6/30/2021**  
**(Pursuant to PA School Code Section 218(b))**

LEA Name : Souderton Area SD  
AUN Number : 123467103  
County : Montgomery

<b>Audit Certification Due:</b> 12/31/2021
---

This certification is applicable to the Annual Financial Report data submitted through the Consolidated Financial Reporting System (CFRS).

CERTIFICATION: By signing this page I agree that the financial statements of the school have been properly audited as noted above pursuant to Article XXIV, and in the auditor's professional opinion, the Annual Financial Report (PDE-2057) submitted through CFRS is materially consistent with the audited financial statements.

Chief School Administrator



Signature

Date

11/9/21

Board Secretary



Signature

Date

11/9/21

Sandra Kassel

Contact Person

skassel@soudertonsd.org

Contact Person E-mail Address

(215)723-6061

Ext :

Contact Person Telephone Number

(215)723-8897

Contact Person Fax Number

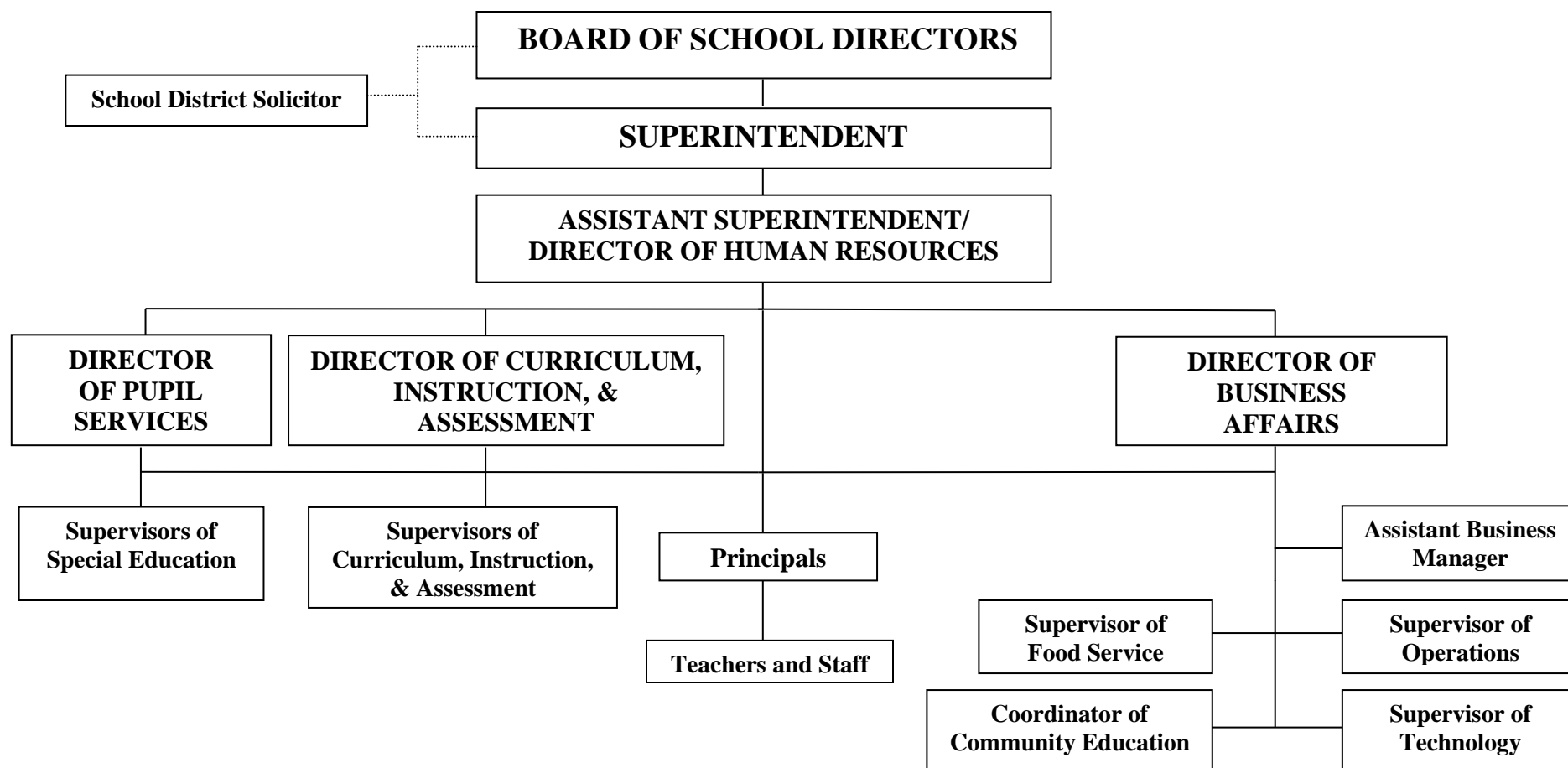
SECTION: LOCAL BOARD PROCEDURES

TITLE: ORGANIZATIONAL CHART

ADOPTED: June 27, 1971

REVISED: February 26, 2015

# SOUDERTON AREA SCHOOL DISTRICT



In the absence of the Superintendent, the Assistant Superintendent assumes the role of the Superintendent.



Book	Policy Manual
Section	600 Finances
Title	GASB Statement 34
Code	622
Status	Active
Adopted	March 26, 2002

### **Purpose**

The Board recognizes the need to implement the required accounting and financial reporting standards stipulated by the Pennsylvania Department of Education (PDE).[\[1\]](#)

The primary objectives of implementing GASB Statement Number 34 are to assure compliance with state requirements and to properly account for both the financial and economic resources of the school entity.

### **Authority**

Participation of the school entity in any such activity shall be in accordance with Board policy.

### **Delegation of Responsibility**

The responsibility to coordinate the compilation and preparation of all information necessary to implement this policy is delegated to the Director of Business Affairs.

The Director of Business Affairs shall be responsible for implementation of the necessary administrative procedures to establish and maintain a fixed asset inventory, including depreciation schedules. Depreciation shall be computed on a straight-line basis over the useful lives of the assets using an averaging convention. Normal maintenance and repairs shall be charged to expense as incurred, major renewals and betterments that materially extend the life or increase the value of the asset shall be capitalized. A schedule of accumulated depreciation shall be consistent from year to year. The basis for depreciation, including groups of assets and useful lives shall be done in writing and submitted for review to the independent local auditors.

The Director of Business Affairs shall prepare the required Management's Discussion and Analysis (MD&A). The MD&A shall be in the form required by GASB Statement Number 34 and shall be submitted to the Superintendent for review prior to publication.

Prior to submission of the MD&A for the Superintendent's review, the school entity's independent auditors shall review the MD&A in accordance with SAS No. 52, "Required Supplementary Information".

### **Guidelines**

In order to associate debt with acquired assets and to avoid net asset deficits, any asset that has been acquired with debt proceeds shall be capitalized regardless of the cost of the asset. The asset life of these assets shall be considered relative to the time of the respective debt amortizations.

For all other assets not acquired by debt proceeds, the dollar value of any single item for inclusion in the fixed assets accounts shall not be less than \$4,000. The capitalization threshold shall be set at a level that will capture at least 80% of all fixed assets.

The following assets do not normally individually meet capitalization threshold criteria: library books, classroom texts, computer equipment, classroom furniture. These asset category costs shall be capitalized and depreciated as groups when that group's acquisition cost exceeds \$10,000 in any given fiscal year.

For group asset depreciation purposes, the estimated useful life of the group may be based on the weighted average or simple average of the useful life of individual items or on an assessment of the life of the group as a whole. Periodically, the school entity shall review the estimated life of groups of assets and adjust the remaining depreciation life of the group.

Assets that fall below the capitalization threshold for GASB Statement Number 34 reporting purposes may still be significant for insurance, warranty service, and obsolescence or replacement policy tracking purposes. The school entity may record and maintain these non-GASB Statement Number 34 asset inventories in subsidiary ledgers.

Legal

1. 24 P.S. 613

LEA : 123467103     Souderton Area SD

Printed 11/9/2021 12:17:40 PM

Amounts Expressed in Whole Dollars		<u>General Fund</u> <u>(10)</u>	<u>Student Sponsored</u> <u>Activity Fund</u> <u>(21)</u>	<u>Public Purpose Trust</u> <u>(27)</u>	<u>Other Compt Approved</u> <u>(28)</u>	<u>Athletic / Activity</u> <u>(29)</u>
<b>Assets And Deferred Outflows Of Resources</b>						
<b>Assets</b>						
0100	Cash and Cash Equivalents	16,293,321				
0110	Investments					
0120	Taxes Receivable	1,311,462				
0130	Due From Other Funds	668,415				
0141	Due From Other Governments	6,618,489				
0142	State Revenue Receivable					
0143	Federal Revenue Receivable					
0145	Other Intergovernmental Revenue Receivable					
0146	Due from Primary Government					
0147	Due from Component Unit					
0150	Other Receivables	150,649				
0170	Inventories					
0180	Prepaid Expenses (Expenditures)	179,841				
0190	Other Current Assets					
<b>Total Assets</b>		<b>\$25,222,177</b>				
0910	Deferred Outflows of Resources					
<b>Total Assets And Deferred Outflows Of Resources</b>		<b>\$25,222,177</b>				

LEA : 123467103      Souderton Area SD

Printed 11/9/2021 12:17:40 PM

Amounts Expressed in Whole Dollars		<u>Capital Reserve (690.</u>	<u>Capital Reserve (1431)</u>	<u>Other Capital Projects</u>	<u>Debt Service</u>	<u>Permanent</u>
		<u>1850)</u>	<u>(32)</u>	<u>Fund</u>	<u>(40)</u>	<u>(90)</u>
		<u>(31)</u>		<u>(39)</u>		
<b>Assets And Deferred Outflows Of Resources</b>						
<b>Assets</b>						
0100	Cash and Cash Equivalents			780,196		
0110	Investments			1,151,000		
0120	Taxes Receivable					
0130	Due From Other Funds			9,138		
0141	Due From Other Governments					
0142	State Revenue Receivable					
0143	Federal Revenue Receivable					
0145	Other Intergovernmental Revenue Receivable					
0146	Due from Primary Government					
0147	Due from Component Unit					
0150	Other Receivables					
0170	Inventories					
0180	Prepaid Expenses (Expenditures)					
0190	Other Current Assets					
<b>Total Assets</b>				<b>\$1,940,334</b>		
0910	Deferred Outflows of Resources					
<b>Total Assets And Deferred Outflows Of Resources</b>				<b>\$1,940,334</b>		

LEA : 123467103      Souderton Area SD

Printed 11/9/2021 12:17:40 PM

Amounts Expressed in Whole Dollars		<u>Total Governmental Funds</u>
<b>Assets And Deferred Outflows Of Resources</b>		
<b>Assets</b>		
0100 Cash and Cash Equivalents		17,073,517
0110 Investments		1,151,000
0120 Taxes Receivable		1,311,462
0130 Due From Other Funds		677,553
0141 Due From Other Governments		6,618,489
0142 State Revenue Receivable		
0143 Federal Revenue Receivable		
0145 Other Intergovernmental Revenue Receivable		
0146 Due from Primary Government		
0147 Due from Component Unit		
0150 Other Receivables		150,649
0170 Inventories		
0180 Prepaid Expenses (Expenditures)		179,841
0190 Other Current Assets		
<b>Total Assets</b>		<b>\$27,162,511</b>
0910 Deferred Outflows of Resources		
<b>Total Assets And Deferred Outflows Of Resources</b>		<b>\$27,162,511</b>



LEA : 123467103     Souderton Area SD

Printed 11/9/2021 12:17:40 PM

Amounts Expressed in Whole Dollars	<u>General Fund</u> <u>(10)</u>	<u>Student Sponsored</u> <u>Activity Fund</u> <u>(21)</u>	<u>Public Purpose Trust</u> <u>(27)</u>	<u>Other Compt Approved</u> <u>(28)</u>	<u>Athletic / Activity</u> <u>(29)</u>
<b>Liabilities And Deferred Inflows Of Resources And Fund Balances</b>					
<b>Liabilities</b>					
0400 Due to Other Funds	409,914				
0411 Due to Other Governments	418,679				
0412 Due to Primary Government					
0413 Due to Component Unit					
0420 Accounts Payable	1,501,785				
0430 Contracts Payable					
0440 Current Portion of Long-Term Debt	174,292				
0450 Short-Term Payables					
0461 Accrued Salaries and Benefits	520,478				
0462 Payroll Deductions and Withholding	7,166,363				
0480 Unearned Revenues	12,798				
0490 Other Current Liabilities	340,468				
<b>Total Liabilities</b>	<b>\$10,544,777</b>				
0950 Deferred Inflows of Resources	967,932				
<b>Fund Balances</b>					
0810 Nonspendable Fund Balance	179,841				
0820 Restricted Fund Balance	192,087				
0830 Committed Fund Balance	1,000,000				
0840 Assigned Fund Balance	2,547,988				
0850 Unassigned Fund Balance	9,789,552				
<b>Total Fund Balances</b>	<b>\$13,709,468</b>				
<b>Total Liabilities, Deferred Inflows Of Resources And Fund Balances</b>	<b>\$25,222,177</b>				

LEA : 123467103     Souderton Area SD

Printed 11/9/2021 12:17:40 PM

Amounts Expressed in Whole Dollars		<u>Capital Reserve (690.</u> <u>1850)</u> <u>(31)</u>	<u>Capital Reserve (1431)</u> <u>(32)</u>	<u>Other Capital Projects</u> <u>Fund</u> <u>(39)</u>	<u>Debt Service</u> <u>(40)</u>	<u>Permanent</u> <u>(90)</u>
<b>Liabilities And Deferred Inflows Of Resources And Fund Balances</b>						
<b>Liabilities</b>						
0400	Due to Other Funds					
0411	Due to Other Governments					
0412	Due to Primary Government					
0413	Due to Component Unit					
0420	Accounts Payable			8,520		
0430	Contracts Payable					
0440	Current Portion of Long-Term Debt					
0450	Short-Term Payables					
0461	Accrued Salaries and Benefits					
0462	Payroll Deductions and Withholding					
0480	Unearned Revenues					
0490	Other Current Liabilities					
<b>Total Liabilities</b>				<b>\$8,520</b>		
0950	Deferred Inflows of Resources					
<b>Fund Balances</b>						
0810	Nonspendable Fund Balance					
0820	Restricted Fund Balance			1,931,814		
0830	Committed Fund Balance					
0840	Assigned Fund Balance					
0850	Unassigned Fund Balance					
<b>Total Fund Balances</b>				<b>\$1,931,814</b>		
<b>Total Liabilities, Deferred Inflows Of Resources And Fund Balances</b>				<b>\$1,940,334</b>		

LEA : 123467103     Souderton Area SD

Printed 11/9/2021 12:17:40 PM

Amounts Expressed in Whole Dollars		<u>Total Governmental Funds</u>
<b>Liabilities And Deferred Inflows Of Resources And Fund Balances</b>		
<b>Liabilities</b>		
0400 Due to Other Funds		409,914
0411 Due to Other Governments		418,679
0412 Due to Primary Government		
0413 Due to Component Unit		
0420 Accounts Payable		1,510,305
0430 Contracts Payable		
0440 Current Portion of Long-Term Debt		174,292
0450 Short-Term Payables		
0461 Accrued Salaries and Benefits		520,478
0462 Payroll Deductions and Withholding		7,166,363
0480 Unearned Revenues		12,798
0490 Other Current Liabilities		340,468
<b>Total Liabilities</b>		<b>\$10,553,297</b>
0950 Deferred Inflows of Resources		967,932
<b>Fund Balances</b>		
0810 Nonspendable Fund Balance		179,841
0820 Restricted Fund Balance		2,123,901
0830 Committed Fund Balance		1,000,000
0840 Assigned Fund Balance		2,547,988
0850 Unassigned Fund Balance		9,789,552
<b>Total Fund Balances</b>		<b>\$15,641,282</b>
<b>Total Liabilities, Deferred Inflows Of Resources And Fund Balances</b>		<b>\$27,162,511</b>

Amounts Expressed in Whole Dollars	<u>General Fund</u> <u>(10)</u>	<u>Student Sponsored</u> <u>Activity Fund</u> <u>(21)</u>	<u>Public Purpose Trust</u> <u>(27)</u>	<u>Other Compt Approved</u> <u>(28)</u>	<u>Athletic / Activity</u> <u>(29)</u>
<b>Revenues</b>					
6000 Revenue from Local Sources	99,635,295				
7000 Revenue from State Sources	31,288,738				
8000 Revenue from Federal Sources	3,863,369				
<b>Total Revenues</b>	<b>\$134,787,402</b>				
<b>Expenditures</b>					
1000 Instruction	83,931,536				
2000 Support Services	40,023,976				
3000 Operation of Non-Instructional Services	1,440,232				
4000 Facilities Acquisition, Construction and Improvement Services	814,667				
5110 Debt Service	9,307,856				
5130 Refund of Prior Year Revenues / Receipts					
<b>Total Expenditures</b>	<b>\$135,518,267</b>				
<b>Excess (Deficiency) Of Revenues Over Expenditures</b>	<b>(\$730,865)</b>				
<b>Other Financing Sources (Uses)</b>					
9110 Face Value of Bonds Issued					
9120 Proceeds from Refunding of Bonds					
9130 Bond Premiums					
9200 Proceeds from Extended-Term Financing					
9300 Interfund Transfers - IN					
9400 Sale of or Compensation for Loss of Fixed Assets	5,197				
9710 Transfers from Component Units					
9720 Transfers from Primary Governments					
9910 Other Financing Sources Not Listed in the 9000 Series					
9990 Insurance Recoveries					
5120 Debt Service – Refunded Bonds					
5150 Bond Discounts					
5200 Interfund Transfers – Out					
5300 Transfers Out to Component Units/Primary Governments					
<b>Total Other Financing Sources (Uses)</b>	<b>\$5,197</b>				

Amounts Expressed in Whole Dollars		<u>Capital Reserve (690.</u> <u>1850)</u> <u>(31)</u>	<u>Capital Reserve (1431)</u> <u>(32)</u>	<u>Other Capital Projects</u> <u>Fund</u> <u>(39)</u>	<u>Debt Service</u> <u>(40)</u>	<u>Permanent</u> <u>(90)</u>
<b>Revenues</b>						
6000	Revenue from Local Sources			3,244		
7000	Revenue from State Sources					
8000	Revenue from Federal Sources					
<b>Total Revenues</b>				<b>\$3,244</b>		
<b>Expenditures</b>						
1000	Instruction					
2000	Support Services					
3000	Operation of Non-Instructional Services					
4000	Facilities Acquisition, Construction and Improvement Services			565,617		
5110	Debt Service			500,000		
5130	Refund of Prior Year Revenues / Receipts					
<b>Total Expenditures</b>				<b>\$1,065,617</b>		
<b>Excess (Deficiency) Of Revenues Over Expenditures</b>				<b>(\$1,062,373)</b>		
<b>Other Financing Sources (Uses)</b>						
9110	Face Value of Bonds Issued					
9120	Proceeds from Refunding of Bonds					
9130	Bond Premiums					
9200	Proceeds from Extended-Term Financing					
9300	Interfund Transfers - IN					
9400	Sale of or Compensation for Loss of Fixed Assets					
9710	Transfers from Component Units					
9720	Transfers from Primary Governments					
9910	Other Financing Sources Not Listed in the 9000 Series					
9990	Insurance Recoveries					
5120	Debt Service – Refunded Bonds					
5150	Bond Discounts					
5200	Interfund Transfers – Out					
5300	Transfers Out to Component Units/Primary Governments					
<b>Total Other Financing Sources (Uses)</b>						

Amounts Expressed in Whole Dollars		<u>Total Governmental Funds</u>
<b>Revenues</b>		
6000	Revenue from Local Sources	99,638,539
7000	Revenue from State Sources	31,288,738
8000	Revenue from Federal Sources	3,863,369
<b>Total Revenues</b>		<b>\$134,790,646</b>
<b>Expenditures</b>		
1000	Instruction	83,931,536
2000	Support Services	40,023,976
3000	Operation of Non-Instructional Services	1,440,232
4000	Facilities Acquisition, Construction and Improvement Services	1,380,284
5110	Debt Service	9,807,856
5130	Refund of Prior Year Revenues / Receipts	
<b>Total Expenditures</b>		<b>\$136,583,884</b>
<b>Excess (Deficiency) Of Revenues Over Expenditures</b>		<b>(\$1,793,238)</b>
<b>Other Financing Sources (Uses)</b>		
9110	Face Value of Bonds Issued	
9120	Proceeds from Refunding of Bonds	
9130	Bond Premiums	
9200	Proceeds from Extended-Term Financing	
9300	Interfund Transfers - IN	
9400	Sale of or Compensation for Loss of Fixed Assets	5,197
9710	Transfers from Component Units	
9720	Transfers from Primary Governments	
9910	Other Financing Sources Not Listed in the 9000 Series	
9990	Insurance Recoveries	
5120	Debt Service – Refunded Bonds	
5150	Bond Discounts	
5200	Interfund Transfers – Out	
5300	Transfers Out to Component Units/Primary Governments	
<b>Total Other Financing Sources (Uses)</b>		<b>\$5,197</b>

Amounts Expressed in Whole Dollars		<u>General Fund</u> <u>(10)</u>	<u>Student Sponsored</u> <u>Activity Fund</u> <u>(21)</u>	<u>Public Purpose Trust</u> <u>(27)</u>	<u>Other Compt Approved</u> <u>(28)</u>	<u>Athletic / Activity</u> <u>(29)</u>
<b>Special And Extraordinary Items</b>						
9920	Special Items – Gains					
9930	Extraordinary Items – Gains					
5520	Special Items – Losses					
5530	Extraordinary Items – Losses					
<b>Net Change In Fund Balances</b>		<b>(\$725,668)</b>				
<b>Fund Balance</b>						
0001	Fund Balance - Beginning of Fiscal Year	14,435,135				
<b>Fund Balance - End Of Year</b>		<b>\$13,709,467</b>				

Amounts Expressed in Whole Dollars		<u>Capital Reserve (690.</u> <u>1850)</u> <u>(31)</u>	<u>Capital Reserve (1431)</u> <u>(32)</u>	<u>Other Capital Projects</u> <u>Fund</u> <u>(39)</u>	<u>Debt Service</u> <u>(40)</u>	<u>Permanent</u> <u>(90)</u>
<b>Special And Extraordinary Items</b>						
9920	Special Items – Gains					
9930	Extraordinary Items – Gains					
5520	Special Items – Losses					
5530	Extraordinary Items – Losses					
<b>Net Change In Fund Balances</b>				<b>(\$1,062,373)</b>		
<b>Fund Balance</b>						
0001	Fund Balance - Beginning of Fiscal Year			2,994,187		
<b>Fund Balance - End Of Year</b>				<b>\$1,931,814</b>		



Amounts Expressed in Whole Dollars		<u>Total Governmental Funds</u>
<b>Special And Extraordinary Items</b>		
9920	Special Items – Gains	
9930	Extraordinary Items – Gains	
5520	Special Items – Losses	
5530	Extraordinary Items – Losses	
<b>Net Change In Fund Balances</b>		<b>(\$1,788,041)</b>
<b>Fund Balance</b>		
0001	Fund Balance - Beginning of Fiscal Year	17,429,322
<b>Fund Balance - End Of Year</b>		<b>\$15,641,281</b>

LEA : 123467103     Souderton Area SD

Printed 11/9/2021 12:17:54 PM

Amounts Expressed in Whole Dollars		<u>Food Service</u> <u>(51)</u>	<u>Child Care</u> <u>Operations</u> <u>(52)</u>	<u>Other Enterprise</u> <u>(58)</u>	<u>TOTAL</u>	<u>Internal Service</u> <u>(60)</u>
<b>Assets And Deferred Outflows Of Resources</b>						
<b>Current Assets</b>						
0100	Cash and Cash Equivalents	454,995			454,995	3,293,809
0110	Investments					
0130	Due From Other Funds	400,777			400,777	
0141	Due From Other Governments	109,080			109,080	
0142	State Revenue Receivable					
0143	Federal Revenue Receivable					
0146	Due from Primary Government					
0147	Due from Component Unit					
0150	Other Receivables	794			794	15,029
0170	Inventories	61,827			61,827	
0180	Prepaid Expenses (Expenditures)					
0190	Other Current Assets					
<b>Total Current Assets</b>		<b>\$1,027,473</b>			<b>\$1,027,473</b>	<b>\$3,308,838</b>
<b>Noncurrent Assets</b>						
0211	Land					
0212	Site Improvements (Net)					
0220	Buildings and Building Improvements (Net)					
0230	Machinery, Equipment and Furniture (Net)	390,417			390,417	
0250	Construction in Progress					
0260	Long Term Prepayments					
0290	Other Noncurrent Assets					
<b>Total Noncurrent Assets</b>		<b>\$390,417</b>			<b>\$390,417</b>	
0910	Deferred Outflows of Resources	439,603			439,603	
<b>Total Assets And Deferred Outflows Of Resources</b>		<b>\$1,857,493</b>			<b>\$1,857,493</b>	<b>\$3,308,838</b>

LEA : 123467103     Souderton Area SD

Printed 11/9/2021 12:17:54 PM

Amounts Expressed in Whole Dollars	<u>Food Service</u> <u>(51)</u>	<u>Child Care</u> <u>Operations</u> <u>(52)</u>	<u>Other Enterprise</u> <u>(58)</u>	<u>TOTAL</u>	<u>Internal Service</u> <u>(60)</u>
<b>Liabilities And Deferred Inflows Of Resources And Net Position</b>					
<b>Current Liabilities</b>					
0400 Due to Other Funds	668,415			668,415	
0411 Due to Other Governments					
0413 Due to Component Unit					
0420 Accounts Payable	30,563			30,563	851,541
0430 Contracts Payable					
0440 Current Portion of Long-Term Debt					
0450 Short-Term Payables					
0461 Accrued Salaries and Benefits	5,238			5,238	
0462 Payroll Deductions and Withholding					
0480 Unearned Revenues	110,672			110,672	
0490 Other Current Liabilities					110,226
<b>Total Current Liabilities</b>	<b>\$814,888</b>			<b>\$814,888</b>	<b>\$961,767</b>
<b>Noncurrent Liabilities</b>					
0510 Bonds Payable					
0520 Extended-Term Financing Agreements Payable					
0530 Lease-Purchase Obligations					
0540 Accumulated Compensated Absences					
0550 Authority Lease Obligations					
0560 Other Post-Employment Benefits (OPEB)	155,898			155,898	
0570 Net Pension Liability	3,078,267			3,078,267	
0599 Other Noncurrent Liabilities					
<b>Total Noncurrent Liabilities</b>	<b>\$3,234,165</b>			<b>\$3,234,165</b>	
<b>Total Liabilities</b>	<b>\$4,049,053</b>			<b>\$4,049,053</b>	<b>\$961,767</b>
0950 Deferred Inflows of Resources	64,053			64,053	
<b>Net Position</b>					
0791 Net Investment in Capital Assets	390,417			390,417	
0008 Restricted Net Position (0792 – 0798)					
0799 Unrestricted Net Position	(2,646,030)			(2,646,030)	2,347,071
<b>Total Net Position</b>	<b>(\$2,255,613)</b>			<b>(\$2,255,613)</b>	<b>\$2,347,071</b>
<b>Total Liabilities And Deferred Inflows Of Resources And Net Position</b>	<b>\$1,857,493</b>			<b>\$1,857,493</b>	<b>\$3,308,838</b>

Amounts Expressed in Whole Dollars	Food Service (51)	Child Care Operations (52)	Other Enterprise (58)	TOTAL	Internal Service (60)
<b>Operating Revenues</b>					
6600 Food Service Revenue	260,802			260,802	
0071 Charges for Services					13,110,542
0072 Other Operating Revenue	12,892			12,892	10,611
<b>Total Operating Revenues</b>	<b>\$273,694</b>			<b>\$273,694</b>	<b>\$13,121,153</b>
<b>Operating Expenses</b>					
100 Personnel Services – Salaries	733,903			733,903	
200 Personnel Services – Employee Benefits	591,031			591,031	11,310,100
300 Purchased Professional and Technical Services	10,845			10,845	
400 Purchased Property Services	91,245			91,245	
500 Other Purchased Services	1,456			1,456	1,010,523
600 Supplies	1,065,129			1,065,129	
740 Depreciation	53,378			53,378	
810 Dues and Fees	1,274			1,274	412,693
880 Refunds of Prior Years' Receipts					
890 Miscellaneous Expenditures					
<b>Total Operating Expenses</b>	<b>\$2,548,261</b>			<b>\$2,548,261</b>	<b>\$12,733,316</b>
<b>Operating Income (Loss)</b>	<b>(\$2,274,567)</b>			<b>(\$2,274,567)</b>	<b>\$387,837</b>
<b>Non Operating Revenues (Expenses)</b>					
6500 Earnings on Investments	336			336	
6920 Contributions and Donations from Private Sources					
6930 Gains or Losses on Sale of Fixed Assets					
6991 Refunds of a Prior Year Expenditure					
7000 Revenue from State Sources	207,219			207,219	
8000 Revenue from Federal Sources	1,790,365			1,790,365	
9990 Insurance Recoveries					
820 Claims and Judgments Against the LEA					
830 Interest					
<b>TOTAL Non Operating Revenues (Expenses)</b>	<b>\$1,997,920</b>			<b>\$1,997,920</b>	
<b>Income (Loss) Before Contributions And Transfers</b>	<b>(\$276,647)</b>			<b>(\$276,647)</b>	<b>\$387,837</b>

Amounts Expressed in Whole Dollars	<u>Food Service</u> <u>(51)</u>	<u>Child Care Operations</u> <u>(52)</u>	<u>Other Enterprise</u> <u>(58)</u>	<u>TOTAL</u>	<u>Internal Service</u> <u>(60)</u>
<b>Contributions, Transfers, and Special and Extraordinary Items</b>					
5200 Interfund Transfers – Out					
5300 Transfers Out to Component Units/Primary Governments					
5520 Special Items – Losses					
5530 Extraordinary Items – Losses					
9300 Interfund Transfers - IN					
9500 Capital Contributions					
9700 Transfers IN From Component Units/Primary Governments					
9920 Special Items – Gains					
9930 Extraordinary Items – Gains					
<b>Change In Net Position</b>	<b>(\$276,647)</b>			<b>(\$276,647)</b>	<b>\$387,837</b>
0002 Net Position - Beginning of Fiscal Year	(1,978,966)			(1,978,966)	1,959,234
0003 Accounting Changes / Residual Equity Transfers					
<b>Net Position - End Of Year</b>	<b>(\$2,255,613)</b>			<b>(\$2,255,613)</b>	<b>\$2,347,071</b>

LEA : 123467103      Souderton Area SD

Printed 11/9/2021 12:18:08 PM

Amounts Expressed in Whole Dollars	<u>Food Service</u> <u>(51)</u>	<u>Child Care Operations</u> <u>(52)</u>	<u>Other Enterprise</u> <u>(58)</u>	<u>TOTAL</u>	<u>Internal Service(60)</u>
<b>Cash Flows From Operating Activities</b>					
0011 Cash Receipts From Users	327,106			327,106	
0012 Cash Receipts From Assessments Made to Other Funds					14,380,215
0013 Cash Receipts From Earnings on Investments					10,611
0014 Cash Receipts From Other Operating Revenue	12,892			12,892	
0015 Cash Payments To Employees For Services	1,250,119			1,250,119	
0016 Cash Payments For Insurance Claims					12,808,178
0017 Cash Payments To Suppliers For Goods and Services	602,783			602,783	
0018 Cash Payments For Other Operating Expenses	1,274			1,274	412,693
<b>Net Cash Provided By (Used For) Operating Activities</b>	<b>(\$1,514,178)</b>			<b>(\$1,514,178)</b>	<b>\$1,169,955</b>
<b>Cash Flows From Non-Capital Financing Activities</b>					
0021 Receipts From Local Sources - 6000					
0022 Receipts From State Sources - 7000	204,343			204,343	
0023 Receipts From Federal Sources -8000	1,571,078			1,571,078	
0024 Notes and Loans Received (Repaid)					
0025 Interest Paid on Notes/Loans - 5100-830					
0026 Operating Transfers In (Out)/Residual Equity Trans					
0027 Operating Transfers In (Out) Primary Government / Comp Unit					
0028 Receipts From Refund of Prior Year Expenditures - 6991					
0029 Special and Extraordinary Gains (losses)					
0030 Receipts from Insurance Recoveries -9990					
<b>Net Cash Prov By (Used for) Non-Capital Financing Activities</b>	<b>\$1,775,421</b>			<b>\$1,775,421</b>	
<b>Cash Flows From Capital and Related Financing Activities</b>					
0031 Payments For Fac Acq, Const, and Imp - 4000	(8,936)			(8,936)	
0032 Gain / (Loss) on Sale of Fixed Assets - 6930					
0033 Proceeds From Extended Term Financing - 9200					
0034 Principal Paid on Financing Agreements					
0035 Interest Paid on Financing Agreements - 5100-830					
0036 (Inc) Dec in Contributed Capital					
<b>Net Cash Prov By (Used for) Capital and Related Financing Activities</b>	<b>(\$8,936)</b>			<b>(\$8,936)</b>	
<b>Cash Flows From Investing Activities</b>					
0041 Earnings on Investments - 6500	336			336	
0042 Purchase of Inv Securities / Deposits to Inv Pools					
0043 Receipts From Investment Pool Withdrawals					
0044 Proceeds from Sale and Maturity of Inv Securities					

LEA : 123467103      Souderton Area SD

Printed 11/9/2021 12:18:08 PM

0045   Loans Received (Paid)

Net Cash Prov By (Used for) Investing Activities	\$336	\$336
--	-------	-------

LEA : 123467103      Souderton Area SD

Printed 11/9/2021 12:18:08 PM

	<u>Food Service</u> <u>(51)</u>	<u>Child Care Operations</u> <u>(52)</u>	<u>Other Enterprise</u> <u>(58)</u>	<u>TOTAL</u>	<u>Internal Service</u> <u>(60)</u>
<b>Net Increase (Decrease) in Cash Flows</b>	<b>252,643</b>			<b>252,643</b>	<b>1,169,955</b>
0004 Cash and Cash Equivalents Beginning of Year	202,352			202,352	2,123,854
<b>Cash and Cash Equivalents at Year End</b>	<b>\$454,995</b>			<b>\$454,995</b>	<b>\$3,293,809</b>
<b>Reconciliation of Operating Income (Loss) To Net Cash Provided by (Used For) Operating Activities</b>					
0005 Operating Income (Loss) per REP	(2,274,567)			(2,274,567)	387,837
<b>Adjustments</b>					
0051 Depreciation and Net Amortization	53,378			53,378	
0052 Provision for Uncollectible Accounts					
0053 Other Adjustments	177,297			177,297	
<b>Effect of Changes in Assets, Liabilities, Deferred Outflows and Deferred Inflows</b>					
0054 (Inc) Dec In Accounts Receivable (0120-0150)	67,081			67,081	153,218
0055 Advances to Other Funds (0160)	(777)			(777)	1,116,455
0056 (Inc) Dec in Inventories (0170)	26,263			26,263	
0057 (Inc) Dec in Prepaid Expenses (0180)					
0058 (Inc) Dec in Other Current or Noncurrent Assets					
0064 Deferred Outflows (0910)	(61,057)			(61,057)	
0059 Inc (Dec) in Accounts Payable (0400-0450)	384,296			384,296	(597,781)
0060 Inc (Dec) in Accrued Salaries/Benefits (0461)	5,238			5,238	
0065 Inc (Dec) in Net Pension Liabilities (0570)	146,417			146,417	
0066 Inc (Dec) in Other Postemp Benefit Oblig (0560)	16,091			16,091	
0061 Inc (Dec) in Payroll Deductions/Withholding (0462)					
0062 Inc (Dec) in Unearned Revenue (0480)					
0063 Inc (Dec) in Other Current or Noncurrent Liabilities	(21,964)			(21,964)	110,226
0067 Deferred Inflows (0950)	(31,874)			(31,874)	
<b>Total Adjustments</b>	<b>\$760,389</b>			<b>\$760,389</b>	<b>\$782,118</b>
<b>Cash Provided By (Used for) Total</b>	<b>(\$1,514,178)</b>			<b>(\$1,514,178)</b>	<b>\$1,169,955</b>



COMBINED STATEMENT OF CASH FLOWS  
SCHEDULE OF NONCASH INVESTING, CAPITAL, AND FINANCING ACTIVITIES

Explanation of Transaction and Balance Sheet Effect	Amount
Total	

LEA : 123467103     Souderton Area SD

Printed 11/9/2021 12:18:11 PM

Amounts Expressed in Whole Dollars		<u>Private Purpose Trust</u> <u>(71)</u>	<u>Investment Trust</u> <u>(72)</u>	<u>Pension Trust</u> <u>(73)</u>	<u>Student Activity Custodial</u> <u>(81)</u>
<b>Assets And Deferred Outflows Of Resources</b>					
<b>Assets</b>					
0100	Cash and Cash Equivalents				234,636
0110	Investments				
0130	Due From Other Funds				
0140	Due from Other Governments, Primary Government and Component Units				
0150	Other Receivables				
0170	Inventories				
0180	Prepaid Expenses (Expenditures)				
0190	Other Current Assets				
0220	Buildings and Building Improvements (Net)				
0230	Machinery, Equipment and Furniture (Net)				
<b>Total Assets</b>					<b>\$234,636</b>
0910	Deferred Outflows of Resources				
<b>Total Assets And Deferred Outflows Of Resources</b>					<b>\$234,636</b>

LEA : 123467103     Souderton Area SD

Printed 11/9/2021 12:18:11 PM

Amounts Expressed in Whole Dollars		<u>Other Custodial</u> <u>(89)</u>	<u>Fiduciary Component Units</u> <u>(98)</u>	<u>Total Fiduciary Funds</u>
<b>Assets And Deferred Outflows Of Resources</b>				
<b>Assets</b>				
0100	Cash and Cash Equivalents			234,636
0110	Investments			
0130	Due From Other Funds			
0140	Due from Other Governments, Primary Government and Component Units			
0150	Other Receivables			
0170	Inventories			
0180	Prepaid Expenses (Expenditures)			
0190	Other Current Assets			
0220	Buildings and Building Improvements (Net)			
0230	Machinery, Equipment and Furniture (Net)			
<b>Total Assets</b>				<b>\$234,636</b>
0910	Deferred Outflows of Resources			
<b>Total Assets And Deferred Outflows Of Resources</b>				<b>\$234,636</b>

LEA : 123467103     Souderton Area SD

Printed 11/9/2021 12:18:11 PM

Amounts Expressed in Whole Dollars		<u>Private Purpose Trust</u> <u>(71)</u>	<u>Investment Trust</u> <u>(72)</u>	<u>Pension Trust</u> <u>(73)</u>	<u>Student Activity Custodial</u> <u>(81)</u>
<b>Liabilities, Deferred Inflows Of Resources And Net Position</b>					
<b>Liabilities</b>					
0400	Due to Other Funds				
0410	Due to Other Governments, Primary Government and Component Units				218
0420	Accounts Payable				
0430	Contracts Payable				
0450	Short-Term Payables				
0460	Payroll Accruals and Withholdings				
0480	Unearned Revenues				
0490	Other Current Liabilities				2,354
<b>Total Liabilities</b>					<b>\$2,572</b>
0950	Deferred Inflows of Resources				
<b>Net Position</b>					
0791	Net Investment in Capital Assets				
0009	Restricted Net Position (0792 – 0798)				232,064
0799	Unrestricted Net Position				
<b>Total Net Position</b>					<b>\$232,064</b>
<b>Total Liabilities, Deferred Inflows Of Resources And Net Position</b>					<b>\$234,636</b>

LEA : 123467103     Souderton Area SD

Printed 11/9/2021 12:18:11 PM

Amounts Expressed in Whole Dollars		<u>Other Custodial</u> <u>(89)</u>	<u>Fiduciary Component Units</u> <u>(98)</u>	<u>Total Fiduciary Funds</u>
<b>Liabilities, Deferred Inflows Of Resources And Net Position</b>				
<b>Liabilities</b>				
0400	Due to Other Funds			
0410	Due to Other Governments, Primary Government and Component Units			218
0420	Accounts Payable			
0430	Contracts Payable			
0450	Short-Term Payables			
0460	Payroll Accruals and Withholdings			
0480	Unearned Revenues			
0490	Other Current Liabilities			2,354
<b>Total Liabilities</b>				<b>\$2,572</b>
0950	Deferred Inflows of Resources			
<b>Net Position</b>				
0791	Net Investment in Capital Assets			
0009	Restricted Net Position (0792 – 0798)			232,064
0799	Unrestricted Net Position			
<b>Total Net Position</b>				<b>\$232,064</b>
<b>Total Liabilities, Deferred Inflows Of Resources And Net Position</b>				<b>\$234,636</b>

LEA : 123467103      Souderton Area SD

Printed 11/9/2021 12:18:13 PM

Amounts Expressed in Whole Dollars	<u>Private Purpose Trust</u> <u>(71)</u>	<u>Investment Trust</u> <u>(72)</u>	<u>Pension Trust</u> <u>(73)</u>	<u>Student Activity</u> <u>Custodial</u> <u>(81)</u>	<u>Other Custodial</u> <u>(89)</u>	<u>Fiduciary Component</u> <u>Units</u> <u>(98)</u>
<b>Additions</b>						
0091 Gifts and Contributions				126,418		
0095 Net Investment Earnings				132		
0092 Other Additions						
<b>Deductions</b>						
0093 Scholarships Awarded						
0094 Other Deductions				147,748		
<b>Change In Net Position</b>				<b>(\$21,198)</b>		
0006 Net Position – Beginning of Fiscal Year				253,262		
0007 Net Position Held in Trust for Pension Benefits						
<b>Net Position - End of Fiscal Year</b>				<b>\$232,064</b>		

LEA : 123467103     Souderton Area SD

Printed 11/9/2021 12:18:13 PM

Amounts Expressed in Whole Dollars		<u>Total Fiduciary</u>
		<u>Funds</u>
<b>Additions</b>		
0091	Gifts and Contributions	126,418
0095	Net Investment Earnings	132
0092	Other Additions	
<b>Deductions</b>		
0093	Scholarships Awarded	
0094	Other Deductions	147,748
<b>Change In Net Position</b>		<b>(\$21,198)</b>
0006	Net Position – Beginning of Fiscal Year	253,262
0007	Net Position Held in Trust for Pension Benefits	
<b>Net Position - End of Fiscal Year</b>		<b>\$232,064</b>

	Revenue Reported In Current Year	Current Year Tax Accrual	Prior Year Tax Accrual	Taxes Collected In Current Year
<b>Revenue from Local Sources</b>				
6111 Current Real Estate Taxes	83,602,712.10			83,602,712.10
6112 Interim Real Estate Taxes	526,615.25			526,615.25
6113 Public Utility Realty Taxes	90,383.35			90,383.35
6114 Payments in Lieu of Current Taxes - State / Local	333,826.48			333,826.48
6120 Current Per Capita Taxes, Section 679	140,818.05			140,818.05
6141 Current Act 511 Per Capita Taxes	140,818.05			140,818.05
6151 Current Act 511 Earned Income Taxes	9,025,879.73			9,025,879.73
6153 Current Act 511 Real Estate Transfer Taxes	1,523,018.76			1,523,018.76
6411 Delinquent Real Estate Taxes	936,557.30			936,557.30
6420 Delinquent Per Capita Taxes, Section 679	14,683.44			14,683.44
6440 Delinquent Local Enabling Taxes - Flat Rate Assessments	14,683.44			14,683.44
6500 Earnings on Investments	147,062.20			
6700 Revenues from LEA Activities	539,022.48			
6832 Federal IDEA Revenue Received as Pass Through	1,242,356.47			
6837 Federal Cares Act Revenue Received as Pass Through	597,744.38			
6910 Rentals	49,808.96			
6920 Contributions and Donations from Private Sources	69,713.60			
6941 Regular Day School Tuition	4,748.48			
6943 Adult Education Tuition	51,097.00			
6944 Receipts from Other LEAs in Pennsylvania - Education	25,940.90			
6961 Transportation Services Provided Other Pennsylvania LEAs	22,161.28			
6962 Other Services Provided Other Pennsylvania LEAs	90,894.35			
6980 Revenue from Community Services Activities	42,397.50			
6999 Other Revenues Not Specified Above	402,351.83			
<b>TOTAL Revenue from Local Sources</b>	<b>\$99,635,295.38</b>			<b>\$96,349,995.95</b>



	Revenue Reported In Current Year			
<b><u>Revenue from State Sources</u></b>				
7111 Basic Education Funding-Formula	9,808,481.80			
7112 Basic Education Funding-Social Security	2,001,866.34			
7160 Tuition for Orphans Subsidy	157,307.18			
7271 Special Education funds for School-Aged Pupils	3,426,717.43			
7311 Pupil Transportation Subsidy	1,753,226.67			
7312 Nonpublic and Charter School Pupil Transportation Subsidy	338,800.00			
7320 Rental and Sinking Fund Payments / Building Reimbursement Subsidy	807,384.21			
7330 Health Services (Medical, Dental, Nurse, Act 25)	245,088.43			
7340 State Property Tax Reduction Allocation	2,257,008.94			
7361 School Safety and Security Grants	265,437.00			
7369 Other Safe School Grants	9,087.00			
7505 Ready to Learn Block Grant	524,477.00			
7820 State Share of Retirement Contributions	9,693,856.48			
<b>TOTAL Revenue from State Sources</b>	<b>\$31,288,738.48</b>			

	Revenue Reported In Current Year			
<b><u>Revenue from Federal Sources</u></b>				
8514 NCLB, Title I - Improving the Academic Achievement of the Disadvantaged	490,781.35			
8515 NCLB, Title II - Preparing, Training and Recruiting High Quality Teachers and Principals	156,865.56			
8516 NCLB, Title III - Language Instruction for Limited English Proficient and Immigrant Students	28,205.57			
8517 NCLB, Title IV - 21St Century Schools	41,840.21			
8690 Other Restricted Federal Grants-in-Aid Through the Commonwealth of PA	23,839.97			
8741 Elementary and Secondary School Emergency Relief Fund (ESSER)	556,180.07			
8742 Governor's Emergency Education Relief Fund (GEER)	79,189.00			
8743 ESSER II - Elementary and Secondary School Emergency Relief Fund	1,896,144.00			
8749 Other CARES Act Funding	377,058.00			
8810 School-Based Access Medicaid Reimbursement Program (SBAP) Reimbursements (Access)	200,000.00			
8820 Medical Assistance Reimbursement for Administrative Claiming (Quarterly) Program	13,265.57			
<b>TOTAL Revenue from Federal Sources</b>	<b>\$3,863,369.30</b>			

	Revenue Reported In Current Year	
<b><u>Other Financing Sources</u></b>		
9400 Sale of or Compensation for Loss of Fixed Assets	5,197.00	
<b>TOTAL Other Financing Sources</b>	<b>\$5,197.00</b>	
<b>TOTAL FROM ALL SOURCES</b>	<b>\$134,792,600.16</b>	<b>\$96,349,995.95</b>

LEA : 123467103      Souderton Area SD

Printed 11/9/2021 12:18:19 PM

	<u>General Fund (10)</u>	<u>Student Sponsored Activity Fund (21)</u>	<u>Public Purpose Trust (27)</u>	<u>Other Compt Approved (28)</u>	<u>Athletic / Activity (29)</u>	<u>Capital Reserve (690, 1850) (31)</u>
<b>6000 Revenue from Local Sources</b>						
6111 Current Real Estate Taxes	83,602,712.10					
6112 Interim Real Estate Taxes	526,615.25					
6113 Public Utility Realty Taxes	90,383.35					
6114 Payments in Lieu of Current Taxes - State / Local	333,826.48					
6120 Current Per Capita Taxes, Section 679	140,818.05					
6141 Current Act 511 Per Capita Taxes	140,818.05					
6151 Current Act 511 Earned Income Taxes	9,025,879.73					
6153 Current Act 511 Real Estate Transfer Taxes	1,523,018.76					
6411 Delinquent Real Estate Taxes	936,557.30					
6420 Delinquent Per Capita Taxes, Section 679	14,683.44					
6440 Delinquent Local Enabling Taxes - Flat Rate Assessments	14,683.44					
6500 Earnings on Investments	147,062.20					
6700 Revenues from LEA Activities	539,022.48					
6832 Federal IDEA Revenue Received as Pass Through	1,242,356.47					
6837 Federal Cares Act Revenue Received as Pass Through	597,744.38					
6910 Rentals	49,808.96					
6920 Contributions and Donations from Private Sources	69,713.60					
6941 Regular Day School Tuition	4,748.48					
6943 Adult Education Tuition	51,097.00					
6944 Receipts from Other LEAs in Pennsylvania - Education	25,940.90					
6961 Transportation Services Provided Other Pennsylvania LEAs	22,161.28					
6962 Other Services Provided Other Pennsylvania LEAs	90,894.35					
6980 Revenue from Community Services Activities	42,397.50					
6999 Other Revenues Not Specified Above	402,351.83					
<b>6000 Total Revenue from Local Sources</b>	<b>\$99,635,295.38</b>					
<b>7000 Revenue from State Sources</b>						
7111 Basic Education Funding-Formula	9,808,481.80					
7112 Basic Education Funding-Social Security	2,001,866.34					
7160 Tuition for Orphans Subsidy	157,307.18					
7271 Special Education funds for School-Aged Pupils	3,426,717.43					
7311 Pupil Transportation Subsidy	1,753,226.67					
7312 Nonpublic and Charter School Pupil Transportation Subsidy	338,800.00					
7320 Rental and Sinking Fund Payments / Building Reimbursement Subsidy	807,384.21					
7330 Health Services (Medical, Dental, Nurse, Act 25)	245,088.43					
7340 State Property Tax Reduction Allocation	2,257,008.94					

LEA : 123467103     Souderton Area SD

Printed 11/9/2021 12:18:19 PM

	<u>Capital Reserve</u> <u>(1431) (32)</u>	<u>Other Capital</u> <u>Projects Fund (39)</u>	<u>Debt Service (40)</u>	<u>Permanent (90)</u>	<u>Total</u>
<b>6000 Revenue from Local Sources</b>					
6111 Current Real Estate Taxes					83,602,712.10
6112 Interim Real Estate Taxes					526,615.25
6113 Public Utility Realty Taxes					90,383.35
6114 Payments in Lieu of Current Taxes - State / Local					333,826.48
6120 Current Per Capita Taxes, Section 679					140,818.05
6141 Current Act 511 Per Capita Taxes					140,818.05
6151 Current Act 511 Earned Income Taxes					9,025,879.73
6153 Current Act 511 Real Estate Transfer Taxes					1,523,018.76
6411 Delinquent Real Estate Taxes					936,557.30
6420 Delinquent Per Capita Taxes, Section 679					14,683.44
6440 Delinquent Local Enabling Taxes - Flat Rate Assessments					14,683.44
6500 Earnings on Investments		3,243.71			150,305.91
6700 Revenues from LEA Activities					539,022.48
6832 Federal IDEA Revenue Received as Pass Through					1,242,356.47
6837 Federal Cares Act Revenue Received as Pass Through					597,744.38
6910 Rentals					49,808.96
6920 Contributions and Donations from Private Sources					69,713.60
6941 Regular Day School Tuition					4,748.48
6943 Adult Education Tuition					51,097.00
6944 Receipts from Other LEAs in Pennsylvania - Education					25,940.90
6961 Transportation Services Provided Other Pennsylvania LEAs					22,161.28
6962 Other Services Provided Other Pennsylvania LEAs					90,894.35
6980 Revenue from Community Services Activities					42,397.50
6999 Other Revenues Not Specified Above					402,351.83
<b>6000 Total Revenue from Local Sources</b>		<b>\$3,243.71</b>			<b>\$99,638,539.09</b>
<b>7000 Revenue from State Sources</b>					
7111 Basic Education Funding-Formula					9,808,481.80
7112 Basic Education Funding-Social Security					2,001,866.34
7160 Tuition for Orphans Subsidy					157,307.18
7271 Special Education funds for School-Aged Pupils					3,426,717.43
7311 Pupil Transportation Subsidy					1,753,226.67
7312 Nonpublic and Charter School Pupil Transportation Subsidy					338,800.00
7320 Rental and Sinking Fund Payments / Building Reimbursement Subsidy					807,384.21
7330 Health Services (Medical, Dental, Nurse, Act 25)					245,088.43
7340 State Property Tax Reduction Allocation					2,257,008.94

LEA : 123467103     Souderton Area SD

Printed 11/9/2021 12:18:19 PM

	<u>General Fund (10)</u>	<u>Student Sponsored Activity Fund (21)</u>	<u>Public Purpose Trust (27)</u>	<u>Other Compt Approved (28)</u>	<u>Athletic / Activity (29)</u>	<u>Capital Reserve (690, 1850) (31)</u>
<b>7000 Revenue from State Sources</b>						
7361 School Safety and Security Grants	265,437.00					
7369 Other Safe School Grants	9,087.00					
7505 Ready to Learn Block Grant	524,477.00					
7820 State Share of Retirement Contributions	9,693,856.48					
<b>7000 Total Revenue from State Sources</b>	<b>\$31,288,738.48</b>					
<b>8000 Revenue from Federal Sources</b>						
8514 NCLB, Title I - Improving the Academic Achievement of the Disadvantaged	490,781.35					
8515 NCLB, Title II - Preparing, Training and Recruiting High Quality Teachers and Principals	156,865.56					
8516 NCLB, Title III - Language Instruction for Limited English Proficient and Immigrant Students	28,205.57					
8517 NCLB, Title IV - 21st Century Schools	41,840.21					
8690 Other Restricted Federal Grants-in-Aid Through the Commonwealth of PA	23,839.97					
8741 Elementary and Secondary School Emergency Relief Fund (ESSER)	556,180.07					
8742 Governor's Emergency Education Relief Fund (GEER)	79,189.00					
8743 ESSER II - Elementary and Secondary School Emergency Relief Fund	1,896,144.00					
8749 Other CARES Act Funding	377,058.00					
8810 School-Based Access Medicaid Reimbursement Program (SBAP) Reimbursements (Access)	200,000.00					
8820 Medical Assistance Reimbursement for Administrative Claiming (Quarterly) Program	13,265.57					
<b>8000 Total Revenue from Federal Sources</b>	<b>\$3,863,369.30</b>					
<b>9000 Other Financing Sources</b>						
9400 Sale of or Compensation for Loss of Fixed Assets	5,197.00					
<b>9000 Total Other Financing Sources</b>	<b>\$5,197.00</b>					
<b>Total From All Sources</b>	<b>\$134,792,600.16</b>					

LEA : 123467103     Souderton Area SD

Printed 11/9/2021 12:18:19 PM

	<u>Capital Reserve</u> <u>(1431) (32)</u>	<u>Other Capital</u> <u>Projects Fund (39)</u>	<u>Debt Service (40)</u>	<u>Permanent (90)</u>	<u>Total</u>
<b>7000 Revenue from State Sources</b>					
7361 School Safety and Security Grants					265,437.00
7369 Other Safe School Grants					9,087.00
7505 Ready to Learn Block Grant					524,477.00
7820 State Share of Retirement Contributions					9,693,856.48
<b>7000 Total Revenue from State Sources</b>					<b>\$31,288,738.48</b>
<b>8000 Revenue from Federal Sources</b>					
8514 NCLB, Title I - Improving the Academic Achievement of the Disadvantaged					490,781.35
8515 NCLB, Title II - Preparing, Training and Recruiting High Quality Teachers and Principals					156,865.56
8516 NCLB, Title III - Language Instruction for Limited English Proficient and Immigrant Students					28,205.57
8517 NCLB, Title IV - 21st Century Schools					41,840.21
8690 Other Restricted Federal Grants-in-Aid Through the Commonwealth of PA					23,839.97
8741 Elementary and Secondary School Emergency Relief Fund (ESSER)					556,180.07
8742 Governor's Emergency Education Relief Fund (GEER)					79,189.00
8743 ESSER II - Elementary and Secondary School Emergency Relief Fund					1,896,144.00
8749 Other CARES Act Funding					377,058.00
8810 School-Based Access Medicaid Reimbursement Program (SBAP) Reimbursements (Access)					200,000.00
8820 Medical Assistance Reimbursement for Administrative Claiming (Quarterly) Program					13,265.57
<b>8000 Total Revenue from Federal Sources</b>					<b>\$3,863,369.30</b>
<b>9000 Other Financing Sources</b>					
9400 Sale of or Compensation for Loss of Fixed Assets					5,197.00
<b>9000 Total Other Financing Sources</b>					<b>\$5,197.00</b>
<b>Total From All Sources</b>		<b>\$3,243.71</b>			<b>\$134,795,843.87</b>

LEA : 123467103     Souderton Area SD

Printed 11/9/2021 12:18:23 PM

	<u>General Fund (10)</u>	<u>Student Sponsored Activity Fund (21)</u>	<u>Public Purpose Trust (27)</u>	<u>Other Compt Approved (28)</u>	<u>Athletic / Activity (29)</u>	<u>Capital Reserve (690. 1850) (31)</u>
Revenue from Local Sources	99,635,295.38					
Revenue from State Sources	31,288,738.48					
Revenue from Federal Sources	3,863,369.30					
Other Financing Sources	5,197.00					
Total From All Sources	\$134,792,600.16					



LEA : 123467103     Souderton Area SD

Printed 11/9/2021 12:18:23 PM

	<u>Capital Reserve (1431)</u> <u>(32)</u>	<u>Other Capital Projects</u> <u>Fund (39)</u>	<u>Debt Service (40)</u>	<u>Permanent (90)</u>	<u>Total</u>
Revenue from Local Sources		3,243.71			99,638,539.09
Revenue from State Sources					31,288,738.48
Revenue from Federal Sources					3,863,369.30
Other Financing Sources					5,197.00
Total From All Sources		\$3,243.71			\$134,795,843.87

LEA : 123467103      Souderton Area SD

Printed 11/9/2021 12:18:28 PM

General Fund (10)

1000 Instruction	Total
100 <u>Personnel Services – Salaries</u>	
100 Personnel Services – Salaries	42,132,179.22
<b>Total Personnel Services – Salaries</b>	<b>\$42,132,179.22</b>
200 <u>Personnel Services – Employee Benefits</u>	
210 Group Insurance – Contracted Provider	64,989.69
220 Social Security Contributions	3,111,055.65
230 PSERS Retirement Contributions	14,463,842.81
250 Unemployment Compensation	59,084.70
260 Workers' Compensation	145,158.61
270 Group Insurance – Self-Insurance	7,168,081.98
291 Other Retirement Plans	142,907.50
<b>Total Personnel Services – Employee Benefits</b>	<b>\$25,155,120.94</b>
300 <u>Purchased Professional and Technical Services</u>	
322 Professional Educational Services – lus	2,403,379.88
323 Professional Educational Services – Other Educational Agencies	312,454.39
329 Professional Educational Services – Other	1,475.00
330 Other Professional Services	1,559,054.88
390 Other Purchased Professional and Technical Services	675.00
<b>Total Purchased Professional and Technical Services</b>	<b>\$4,277,039.15</b>
400 <u>Purchased Property Services</u>	
430 Repairs and Maintenance Services	7,624.51
<b>Total Purchased Property Services</b>	<b>\$7,624.51</b>
500 <u>Other Purchased Services</u>	
510 Student Transportation Services	17,348.21
530 Communications	4,223.59
550 Printing and Binding	15,057.32
561 Tuition To Other School Districts Within the State	3,883.44
562 Tuition To Pennsylvania Charter Schools	4,950,894.27
563 Tuition To Nonpublic Schools	2,263,347.36
564 Tuition To Career and Technology Centers	1,856,597.38
566 Tuition To Institutions of Higher Education and Technical Institutes	2,925.00
567 Tuition To Approved Private Schools (APS) and PA Chartered Schools for the Deaf and Blind	262,598.50
568 Tuition To Private Residential Rehabilitative Institutions (PRRI) [In-State] and Detention Centers	1,634,388.97
580 Travel	5,823.59
594 IU Payment By Withholding for Institutionalized Children's Programs – Special Classes	605.47
599 Other Miscellaneous Purchased Services	735.00
<b>Total Other Purchased Services</b>	<b>\$11,018,428.10</b>
600 <u>Supplies</u>	
610 General Supplies	809,813.66
630 Food	7,903.42
640 Books and Periodicals	141,614.03
650 Supplies & Fees – Technology Related	349,594.82
<b>Total Supplies</b>	<b>\$1,308,925.93</b>

LEA : 123467103     Souderton Area SD

Printed 11/9/2021 12:18:28 PM

<b>General Fund (10)</b>	
<b>1000 Instruction</b>	<b><u>Total</u></b>
<b>700 <u>Property</u></b>	
752 Capital Equipment – Original and Additional	17,519.70
768 Capitalized Technology Software - Replacement	4,248.59
<b>Total Property</b>	<b>\$21,768.29</b>
<b>800 <u>Other Objects</u></b>	
810 Dues and Fees	3,210.06
820 Claims and Judgments Against the LEA	7,114.49
890 Miscellaneous Expenditures	125.00
<b>Total Other Objects</b>	<b>\$10,449.55</b>
<b>Total 1000 Instruction</b>	<b>\$83,931,535.69</b>

LEA : 123467103     Souderton Area SD

Printed 11/9/2021 12:18:28 PM

General Fund (10)

1100 Regular Programs – Elementary / Secondary

	Elementary	Secondary	Federal	Total
<b>100 Personnel Services – Salaries</b>				
100 Personnel Services – Salaries	13,956,157.45	16,476,871.75	1,499,426.73	31,932,455.93
<b>Total Personnel Services – Salaries</b>	<b>\$13,956,157.45</b>	<b>\$16,476,871.75</b>	<b>\$1,499,426.73</b>	<b>\$31,932,455.93</b>
<b>200 Personnel Services – Employee Benefits</b>				
210 Group Insurance – Contracted Provider	25,366.47	35,055.37	0.84	60,422.68
220 Social Security Contributions	1,063,841.93	1,228,359.07	69,727.16	2,361,928.16
230 PSERS Retirement Contributions	4,931,175.73	5,732,825.01	316,821.23	10,980,821.97
250 Unemployment Compensation	22,202.67	32,988.86	57.00	55,248.53
260 Workers' Compensation	46,873.29	45,121.51	1,896.20	93,891.00
270 Group Insurance – Self-Insurance	2,607,745.98	3,017,688.25		5,625,434.23
291 Other Retirement Plans	104,905.00	25,902.50		130,807.50
<b>Total Personnel Services – Employee Benefits</b>	<b>\$8,802,111.07</b>	<b>\$10,117,940.57</b>	<b>\$388,502.43</b>	<b>\$19,308,554.07</b>
<b>300 Purchased Professional and Technical Services</b>				
323 Professional Educational Services – Other Educational Agencies		881.82		881.82
330 Other Professional Services	7,265.35	25,046.60		32,311.95
390 Other Purchased Professional and Technical Services		675.00		675.00
<b>Total Purchased Professional and Technical Services</b>	<b>\$7,265.35</b>	<b>\$26,603.42</b>		<b>\$33,868.77</b>
<b>400 Purchased Property Services</b>				
430 Repairs and Maintenance Services		7,624.51		7,624.51
<b>Total Purchased Property Services</b>		<b>\$7,624.51</b>		<b>\$7,624.51</b>
<b>500 Other Purchased Services</b>				
510 Student Transportation Services		16,263.21		16,263.21
530 Communications	110.00	3,860.95		3,970.95
550 Printing and Binding		2,641.90		2,641.90
562 Tuition To Pennsylvania Charter Schools	2,181,894.90	1,223,260.67		3,405,155.57
568 Tuition To Private Residential Rehabilitative Institutions (PRRI) [In-State] and Detention Centers	319,246.88	1,311,647.09		1,630,893.97
580 Travel	146.15	391.61		537.76
599 Other Miscellaneous Purchased Services		135.00		135.00
<b>Total Other Purchased Services</b>	<b>\$2,501,397.93</b>	<b>\$2,558,200.43</b>		<b>\$5,059,598.36</b>
<b>600 Supplies</b>				
610 General Supplies	399,030.03	271,370.66	41,842.99	712,243.68
630 Food	41.11	7,862.31		7,903.42
640 Books and Periodicals	62,031.06	38,416.74	18,723.71	119,171.51
650 Supplies & Fees – Technology Related	146,738.17	146,326.90	8,009.88	301,074.95
<b>Total Supplies</b>	<b>\$607,840.37</b>	<b>\$463,976.61</b>	<b>\$68,576.58</b>	<b>\$1,140,393.56</b>
<b>700 Property</b>				
752 Capital Equipment – Original and Additional		17,519.70		17,519.70
768 Capitalized Technology Software - Replacement		4,248.59		4,248.59
<b>Total Property</b>		<b>\$21,768.29</b>		<b>\$21,768.29</b>
<b>800 Other Objects</b>				
810 Dues and Fees		344.00		344.00

LEA : 123467103     Souderton Area SD

Printed 11/9/2021 12:18:28 PM

General Fund (10)

1100 Regular Programs – Elementary / Secondary	<u>Elementary</u>	<u>Secondary</u>	<u>Federal</u>	<u>Total</u>
800 <u>Other Objects</u>				
890 Miscellaneous Expenditures	125.00			125.00
Total Other Objects	\$125.00	\$344.00		\$469.00
Total 1100 Regular Programs – Elementary / Secondary	\$25,874,897.17	\$29,673,329.58	\$1,956,505.74	\$57,504,732.49

LEA : 123467103     Souderton Area SD

Printed 11/9/2021 12:18:28 PM

General Fund (10)

1110 Regular Programs

	Elementary	Secondary	Federal	Total
<b>100 <u>Personnel Services – Salaries</u></b>				
100 Personnel Services – Salaries	13,956,157.45	16,476,871.75	1,148,230.21	31,581,259.41
<b>Total Personnel Services – Salaries</b>	<b>\$13,956,157.45</b>	<b>\$16,476,871.75</b>	<b>\$1,148,230.21</b>	<b>\$31,581,259.41</b>
<b>200 <u>Personnel Services – Employee Benefits</u></b>				
210 Group Insurance – Contracted Provider	25,366.47	35,055.37		60,421.84
220 Social Security Contributions	1,063,841.93	1,228,359.07	43,412.85	2,335,613.85
230 PSERS Retirement Contributions	4,931,175.73	5,732,825.01	195,827.84	10,859,828.58
250 Unemployment Compensation	22,202.67	32,988.86		55,191.53
260 Workers' Compensation	46,873.29	45,121.51		91,994.80
270 Group Insurance – Self-Insurance	2,607,745.98	3,017,688.25		5,625,434.23
291 Other Retirement Plans	104,905.00	25,902.50		130,807.50
<b>Total Personnel Services – Employee Benefits</b>	<b>\$8,802,111.07</b>	<b>\$10,117,940.57</b>	<b>\$239,240.69</b>	<b>\$19,159,292.33</b>
<b>300 <u>Purchased Professional and Technical Services</u></b>				
323 Professional Educational Services – Other Educational Agencies		881.82		881.82
330 Other Professional Services	7,265.35	25,046.60		32,311.95
390 Other Purchased Professional and Technical Services		675.00		675.00
<b>Total Purchased Professional and Technical Services</b>	<b>\$7,265.35</b>	<b>\$26,603.42</b>		<b>\$33,868.77</b>
<b>400 <u>Purchased Property Services</u></b>				
430 Repairs and Maintenance Services		7,624.51		7,624.51
<b>Total Purchased Property Services</b>		<b>\$7,624.51</b>		<b>\$7,624.51</b>
<b>500 <u>Other Purchased Services</u></b>				
510 Student Transportation Services		16,263.21		16,263.21
530 Communications	110.00	3,860.95		3,970.95
550 Printing and Binding		2,641.90		2,641.90
562 Tuition To Pennsylvania Charter Schools	2,181,894.90	1,223,260.67		3,405,155.57
568 Tuition To Private Residential Rehabilitative Institutions (PRRI) [In-State] and Detention Centers	319,246.88	1,311,647.09		1,630,893.97
580 Travel	146.15	391.61		537.76
599 Other Miscellaneous Purchased Services		135.00		135.00
<b>Total Other Purchased Services</b>	<b>\$2,501,397.93</b>	<b>\$2,558,200.43</b>		<b>\$5,059,598.36</b>
<b>600 <u>Supplies</u></b>				
610 General Supplies	399,030.03	271,370.66	74.67	670,475.36
630 Food	41.11	7,862.31		7,903.42
640 Books and Periodicals	62,031.06	38,416.74	1,809.01	102,256.81
650 Supplies & Fees – Technology Related	146,738.17	146,326.90		293,065.07
<b>Total Supplies</b>	<b>\$607,840.37</b>	<b>\$463,976.61</b>	<b>\$1,883.68</b>	<b>\$1,073,700.66</b>
<b>700 <u>Property</u></b>				
752 Capital Equipment – Original and Additional		17,519.70		17,519.70
768 Capitalized Technology Software - Replacement		4,248.59		4,248.59
<b>Total Property</b>		<b>\$21,768.29</b>		<b>\$21,768.29</b>
<b>800 <u>Other Objects</u></b>				
810 Dues and Fees		344.00		344.00

LEA : 123467103     Souderton Area SD

Printed 11/9/2021 12:18:28 PM

General Fund (10)

1110 Regular Programs

800 Other Objects

890 Miscellaneous Expenditures	Elementary	Secondary	Federal	Total
	125.00			125.00
Total Other Objects	\$125.00	\$344.00		\$469.00
Total 1110 Regular Programs	\$25,874,897.17	\$29,673,329.58	\$1,389,354.58	\$56,937,581.33

LEA : 123467103     Souderton Area SD

Printed 11/9/2021 12:18:28 PM

General Fund (10)

1190 Federally-Funded Regular Programs

	<u>Elementary</u>	<u>Secondary</u>	<u>Federal</u>	<u>Total</u>
<b>100 <u>Personnel Services – Salaries</u></b>				
100 Personnel Services – Salaries			351,196.52	351,196.52
<b>Total Personnel Services – Salaries</b>			<b>\$351,196.52</b>	<b>\$351,196.52</b>
<b>200 <u>Personnel Services – Employee Benefits</u></b>				
210 Group Insurance – Contracted Provider			0.84	0.84
220 Social Security Contributions			26,314.31	26,314.31
230 PSERS Retirement Contributions			120,993.39	120,993.39
250 Unemployment Compensation			57.00	57.00
260 Workers' Compensation			1,896.20	1,896.20
<b>Total Personnel Services – Employee Benefits</b>			<b>\$149,261.74</b>	<b>\$149,261.74</b>
<b>600 <u>Supplies</u></b>				
610 General Supplies			41,768.32	41,768.32
640 Books and Periodicals			16,914.70	16,914.70
650 Supplies & Fees – Technology Related			8,009.88	8,009.88
<b>Total Supplies</b>			<b>\$66,692.90</b>	<b>\$66,692.90</b>
<b>Total 1190 Federally-Funded Regular Programs</b>			<b>\$567,151.16</b>	<b>\$567,151.16</b>



LEA : 123467103     Souderton Area SD

Printed 11/9/2021 12:18:28 PM

General Fund (10)

1200 Special Programs – Elementary / Secondary	Elementary	Secondary	Federal	Total
<b>100 Personnel Services – Salaries</b>				
100 Personnel Services – Salaries	4,066,612.33	4,674,691.60	1,281,758.73	10,023,062.66
<b>Total Personnel Services – Salaries</b>	<b>\$4,066,612.33</b>	<b>\$4,674,691.60</b>	<b>\$1,281,758.73</b>	<b>\$10,023,062.66</b>
<b>200 Personnel Services – Employee Benefits</b>				
210 Group Insurance – Contracted Provider	1,733.46	2,367.52		4,100.98
220 Social Security Contributions	326,940.74	362,424.15	46,968.47	736,333.36
230 PSERS Retirement Contributions	1,519,221.92	1,698,216.14	219,359.35	3,436,797.41
250 Unemployment Compensation	1,892.93	1,788.40		3,681.33
260 Workers' Compensation	24,023.31	26,320.99	272.58	50,616.88
270 Group Insurance – Self-Insurance	662,950.75	879,697.00		1,542,647.75
291 Other Retirement Plans	2,400.00	6,100.00		8,500.00
<b>Total Personnel Services – Employee Benefits</b>	<b>\$2,539,163.11</b>	<b>\$2,976,914.20</b>	<b>\$266,600.40</b>	<b>\$5,782,677.71</b>
<b>300 Purchased Professional and Technical Services</b>				
322 Professional Educational Services – Ius	1,065,132.36	1,140,667.60	179,143.92	2,384,943.88
323 Professional Educational Services – Other Educational Agencies	5,022.00	64,743.62		69,765.62
329 Professional Educational Services – Other		1,475.00		1,475.00
330 Other Professional Services	274,533.99	1,145,735.95	83,297.99	1,503,567.93
<b>Total Purchased Professional and Technical Services</b>	<b>\$1,344,688.35</b>	<b>\$2,352,622.17</b>	<b>\$262,441.91</b>	<b>\$3,959,752.43</b>
<b>500 Other Purchased Services</b>				
530 Communications	70.43	182.21		252.64
550 Printing and Binding	77.77			77.77
561 Tuition To Other School Districts Within the State		3,883.44		3,883.44
562 Tuition To Pennsylvania Charter Schools	867,266.37	678,472.33		1,545,738.70
563 Tuition To Nonpublic Schools	604,371.25	1,658,976.11		2,263,347.36
566 Tuition To Institutions of Higher Education and Technical Institutes		2,925.00		2,925.00
567 Tuition To Approved Private Schools (APS) and PA Chartered Schools for the Deaf and Blind	53,727.50	208,871.00		262,598.50
568 Tuition To Private Residential Rehabilitative Institutions (PRRI) [In-State] and Detention Centers		3,495.00		3,495.00
580 Travel	3,463.51	1,822.32		5,285.83
594 IU Payment By Withholding for Institutionalized Children's Programs – Special Classes	605.47			605.47
<b>Total Other Purchased Services</b>	<b>\$1,529,582.30</b>	<b>\$2,558,627.41</b>		<b>\$4,088,209.71</b>
<b>600 Supplies</b>				
610 General Supplies	35,978.92	41,449.66	11,563.60	88,992.18
640 Books and Periodicals	19,802.86	2,639.66		22,442.52
650 Supplies & Fees – Technology Related	15,317.91	33,201.96		48,519.87
<b>Total Supplies</b>	<b>\$71,099.69</b>	<b>\$77,291.28</b>	<b>\$11,563.60</b>	<b>\$159,954.57</b>
<b>800 Other Objects</b>				
810 Dues and Fees		42.00		42.00
820 Claims and Judgments Against the LEA	2,114.49	5,000.00		7,114.49
<b>Total Other Objects</b>	<b>\$2,114.49</b>	<b>\$5,042.00</b>		<b>\$7,156.49</b>
<b>Total 1200 Special Programs – Elementary / Secondary</b>	<b>\$9,553,260.27</b>	<b>\$12,645,188.66</b>	<b>\$1,822,364.64</b>	<b>\$24,020,813.57</b>

LEA : 123467103      Souderton Area SD

Printed 11/9/2021 12:18:28 PM

General Fund (10)

1210 Life Skills Support

	<u>Elementary</u>	<u>Secondary</u>	<u>Federal</u>	<u>Total</u>
<b>100 <u>Personnel Services – Salaries</u></b>				
100 Personnel Services – Salaries	311,778.91	680,170.62		991,949.53
<b>Total Personnel Services – Salaries</b>	<b>\$311,778.91</b>	<b>\$680,170.62</b>		<b>\$991,949.53</b>
<b>200 <u>Personnel Services – Employee Benefits</u></b>				
210 Group Insurance – Contracted Provider	4.20	10.08		14.28
220 Social Security Contributions	22,810.00	50,469.64		73,279.64
230 PSERS Retirement Contributions	106,447.51	234,208.80		340,656.31
250 Unemployment Compensation	87.09	184.07		271.16
260 Workers' Compensation	1,683.78	3,672.80		5,356.58
270 Group Insurance – Self-Insurance	28,854.75	73,270.25		102,125.00
<b>Total Personnel Services – Employee Benefits</b>	<b>\$159,887.33</b>	<b>\$361,815.64</b>		<b>\$521,702.97</b>
<b>300 <u>Purchased Professional and Technical Services</u></b>				
322 Professional Educational Services – Ius	81,783.39	117,567.43		199,350.82
330 Other Professional Services	34,684.62	306,197.27		340,881.89
<b>Total Purchased Professional and Technical Services</b>	<b>\$116,468.01</b>	<b>\$423,764.70</b>		<b>\$540,232.71</b>
<b>500 <u>Other Purchased Services</u></b>				
580 Travel		268.19		268.19
<b>Total Other Purchased Services</b>		<b>\$268.19</b>		<b>\$268.19</b>
<b>600 <u>Supplies</u></b>				
610 General Supplies	784.63	5,787.92		6,572.55
640 Books and Periodicals	259.81			259.81
650 Supplies & Fees – Technology Related	5,036.66	8,553.75		13,590.41
<b>Total Supplies</b>	<b>\$6,081.10</b>	<b>\$14,341.67</b>		<b>\$20,422.77</b>
<b>Total 1210 Life Skills Support</b>	<b>\$594,215.35</b>	<b>\$1,480,360.82</b>		<b>\$2,074,576.17</b>

LEA : 123467103     Souderton Area SD

Printed 11/9/2021 12:18:28 PM

General Fund (10)

1220 Sensory Support	Elementary	Secondary	Federal	Total
<b>100 Personnel Services – Salaries</b>				
100 Personnel Services – Salaries	619,428.00	104,284.50		723,712.50
<b>Total Personnel Services – Salaries</b>	<b>\$619,428.00</b>	<b>\$104,284.50</b>		<b>\$723,712.50</b>
<b>200 Personnel Services – Employee Benefits</b>				
210 Group Insurance – Contracted Provider	15.12	2.28		17.40
220 Social Security Contributions	46,102.86	7,674.12		53,776.98
230 PSERS Retirement Contributions	213,765.13	35,988.47		249,753.60
250 Unemployment Compensation	62.42	14.38		76.80
260 Workers' Compensation	3,344.62	562.92		3,907.54
270 Group Insurance – Self-Insurance	85,843.25	11,903.00		97,746.25
<b>Total Personnel Services – Employee Benefits</b>	<b>\$349,133.40</b>	<b>\$56,145.17</b>		<b>\$405,278.57</b>
<b>300 Purchased Professional and Technical Services</b>				
322 Professional Educational Services – Ius		1,630.08		1,630.08
330 Other Professional Services	111,370.48	84,740.95	29,491.71	225,603.14
<b>Total Purchased Professional and Technical Services</b>	<b>\$111,370.48</b>	<b>\$86,371.03</b>	<b>\$29,491.71</b>	<b>\$227,233.22</b>
<b>600 Supplies</b>				
610 General Supplies	905.51	497.23		1,402.74
640 Books and Periodicals	274.95			274.95
650 Supplies & Fees – Technology Related	2,071.73	571.91		2,643.64
<b>Total Supplies</b>	<b>\$3,252.19</b>	<b>\$1,069.14</b>		<b>\$4,321.33</b>
<b>Total 1220 Sensory Support</b>	<b>\$1,083,184.07</b>	<b>\$247,869.84</b>	<b>\$29,491.71</b>	<b>\$1,360,545.62</b>

LEA : 123467103     Souderton Area SD

Printed 11/9/2021 12:18:28 PM

General Fund (10)

1230 Emotional Support

	Elementary	Secondary	Federal	Total
<b>100 <u>Personnel Services – Salaries</u></b>				
100 Personnel Services – Salaries	407,633.54	253,317.30	949,819.22	1,610,770.06
<b>Total Personnel Services – Salaries</b>	<b>\$407,633.54</b>	<b>\$253,317.30</b>	<b>\$949,819.22</b>	<b>\$1,610,770.06</b>
<b>200 <u>Personnel Services – Employee Benefits</u></b>				
210 Group Insurance – Contracted Provider	22.44	17.76		40.20
220 Social Security Contributions	49,238.89	33,196.78	34,604.48	117,040.15
230 PSERS Retirement Contributions	231,336.25	158,867.10	163,410.60	553,613.95
250 Unemployment Compensation	282.14	137.61		419.75
260 Workers' Compensation	4,799.81	3,625.33	272.58	8,697.72
270 Group Insurance – Self-Insurance	125,743.75	86,347.50		212,091.25
<b>Total Personnel Services – Employee Benefits</b>	<b>\$411,423.28</b>	<b>\$282,192.08</b>	<b>\$198,287.66</b>	<b>\$891,903.02</b>
<b>300 <u>Purchased Professional and Technical Services</u></b>				
322 Professional Educational Services – Ius	274,248.40	173,363.86		447,612.26
330 Other Professional Services	90,772.29	340,261.91		431,034.20
<b>Total Purchased Professional and Technical Services</b>	<b>\$365,020.69</b>	<b>\$513,625.77</b>		<b>\$878,646.46</b>
<b>500 <u>Other Purchased Services</u></b>				
580 Travel	433.89			433.89
<b>Total Other Purchased Services</b>	<b>\$433.89</b>			<b>\$433.89</b>
<b>600 <u>Supplies</u></b>				
610 General Supplies	9,128.90	3,242.71		12,371.61
640 Books and Periodicals	2,787.41	764.28		3,551.69
650 Supplies & Fees – Technology Related	3,866.00	9,129.37		12,995.37
<b>Total Supplies</b>	<b>\$15,782.31</b>	<b>\$13,136.36</b>		<b>\$28,918.67</b>
<b>Total 1230 Emotional Support</b>	<b>\$1,200,293.71</b>	<b>\$1,062,271.51</b>	<b>\$1,148,106.88</b>	<b>\$3,410,672.10</b>

LEA : 123467103     Souderton Area SD

Printed 11/9/2021 12:18:28 PM

General Fund (10)

1240 Academic Support

	<u>Elementary</u>	<u>Secondary</u>	<u>Federal</u>	<u>Total</u>
<b>100 <u>Personnel Services – Salaries</u></b>				
100 Personnel Services – Salaries	1,946,580.05	3,083,388.79	331,939.51	5,361,908.35
<b>Total Personnel Services – Salaries</b>	<b>\$1,946,580.05</b>	<b>\$3,083,388.79</b>	<b>\$331,939.51</b>	<b>\$5,361,908.35</b>
<b>200 <u>Personnel Services – Employee Benefits</u></b>				
210 Group Insurance – Contracted Provider	43.59	103.30		146.89
220 Social Security Contributions	150,656.65	230,364.71	12,363.99	393,385.35
230 PSERS Retirement Contributions	702,937.03	1,080,020.60	55,948.75	1,838,906.38
250 Unemployment Compensation	541.73	536.24		1,077.97
260 Workers' Compensation	11,797.79	17,171.56		28,969.35
270 Group Insurance – Self-Insurance	311,894.25	664,308.75		976,203.00
<b>Total Personnel Services – Employee Benefits</b>	<b>\$1,177,871.04</b>	<b>\$1,992,505.16</b>	<b>\$68,312.74</b>	<b>\$3,238,688.94</b>
<b>300 <u>Purchased Professional and Technical Services</u></b>				
322 Professional Educational Services – Ius	142,861.12	125,025.16		267,886.28
330 Other Professional Services	19,523.47	315,717.07		335,240.54
<b>Total Purchased Professional and Technical Services</b>	<b>\$162,384.59</b>	<b>\$440,742.23</b>		<b>\$603,126.82</b>
<b>600 <u>Supplies</u></b>				
610 General Supplies	18,406.50	2,351.03		20,757.53
640 Books and Periodicals	16,480.69	1,875.38		18,356.07
650 Supplies & Fees – Technology Related	1,682.25	8,923.08		10,605.33
<b>Total Supplies</b>	<b>\$36,569.44</b>	<b>\$13,149.49</b>		<b>\$49,718.93</b>
<b>Total 1240 Academic Support</b>	<b>\$3,323,405.12</b>	<b>\$5,529,785.67</b>	<b>\$400,252.25</b>	<b>\$9,253,443.04</b>

LEA : 123467103     Souderton Area SD

Printed 11/9/2021 12:18:28 PM

General Fund (10)

1241 Learning Support – Public	Elementary	Secondary	Federal	Total
<b>100 Personnel Services – Salaries</b>				
100 Personnel Services – Salaries	1,710,954.21	2,775,076.79	281,671.82	4,767,702.82
<b>Total Personnel Services – Salaries</b>	<b>\$1,710,954.21</b>	<b>\$2,775,076.79</b>	<b>\$281,671.82</b>	<b>\$4,767,702.82</b>
<b>200 Personnel Services – Employee Benefits</b>				
210 Group Insurance – Contracted Provider	33.03	88.18		121.21
220 Social Security Contributions	132,609.56	207,169.13	10,362.55	350,141.24
230 PSERS Retirement Contributions	617,588.45	973,621.81	46,757.27	1,637,967.53
250 Unemployment Compensation	512.93	507.44		1,020.37
260 Workers' Compensation	10,241.43	15,507.02		25,748.45
270 Group Insurance – Self-Insurance	271,736.75	619,500.75		891,237.50
<b>Total Personnel Services – Employee Benefits</b>	<b>\$1,032,722.15</b>	<b>\$1,816,394.33</b>	<b>\$57,119.82</b>	<b>\$2,906,236.30</b>
<b>300 Purchased Professional and Technical Services</b>				
322 Professional Educational Services – Ius	142,861.12	125,025.16		267,886.28
330 Other Professional Services	19,523.47	315,717.07		335,240.54
<b>Total Purchased Professional and Technical Services</b>	<b>\$162,384.59</b>	<b>\$440,742.23</b>		<b>\$603,126.82</b>
<b>600 Supplies</b>				
610 General Supplies	18,406.50	2,351.03		20,757.53
640 Books and Periodicals	16,051.39	1,875.38		17,926.77
650 Supplies & Fees – Technology Related	1,487.25	8,923.08		10,410.33
<b>Total Supplies</b>	<b>\$35,945.14</b>	<b>\$13,149.49</b>		<b>\$49,094.63</b>
<b>Total 1241 Learning Support – Public</b>	<b>\$2,942,006.09</b>	<b>\$5,045,362.84</b>	<b>\$338,791.64</b>	<b>\$8,326,160.57</b>

LEA : 123467103     Souderton Area SD

Printed 11/9/2021 12:18:28 PM

General Fund (10)

1243 Gifted Support	Elementary	Secondary	Federal	Total
<b>100 Personnel Services – Salaries</b>				
100 Personnel Services – Salaries	235,625.84	308,312.00	50,267.69	594,205.53
<b>Total Personnel Services – Salaries</b>	<b>\$235,625.84</b>	<b>\$308,312.00</b>	<b>\$50,267.69</b>	<b>\$594,205.53</b>
<b>200 Personnel Services – Employee Benefits</b>				
210 Group Insurance – Contracted Provider	10.56	15.12		25.68
220 Social Security Contributions	18,047.09	23,195.58	2,001.44	43,244.11
230 PSERS Retirement Contributions	85,348.58	106,398.79	9,191.48	200,938.85
250 Unemployment Compensation	28.80	28.80		57.60
260 Workers' Compensation	1,556.36	1,664.54		3,220.90
270 Group Insurance – Self-Insurance	40,157.50	44,808.00		84,965.50
<b>Total Personnel Services – Employee Benefits</b>	<b>\$145,148.89</b>	<b>\$176,110.83</b>	<b>\$11,192.92</b>	<b>\$332,452.64</b>
<b>600 Supplies</b>				
640 Books and Periodicals	429.30			429.30
650 Supplies & Fees – Technology Related	195.00			195.00
<b>Total Supplies</b>	<b>\$624.30</b>			<b>\$624.30</b>
<b>Total 1243 Gifted Support</b>	<b>\$381,399.03</b>	<b>\$484,422.83</b>	<b>\$61,460.61</b>	<b>\$927,282.47</b>

LEA : 123467103      Souderton Area SD

Printed 11/9/2021 12:18:28 PM

General Fund (10)

1260 Physical Support

	<u>Elementary</u>	<u>Secondary</u>	<u>Federal</u>	<u>Total</u>
<b>100 <u>Personnel Services – Salaries</u></b>				
100 Personnel Services – Salaries	228,060.56	83,211.44		311,272.00
<b>Total Personnel Services – Salaries</b>	<b>\$228,060.56</b>	<b>\$83,211.44</b>		<b>\$311,272.00</b>
<b>200 <u>Personnel Services – Employee Benefits</u></b>				
210 Group Insurance – Contracted Provider	14.16	4.56		18.72
220 Social Security Contributions	16,899.79	6,113.36		23,013.15
230 PSERS Retirement Contributions	78,703.81	28,716.23		107,420.04
250 Unemployment Compensation	29.76	8.64		38.40
260 Workers' Compensation	715.45	113.57		829.02
<b>Total Personnel Services – Employee Benefits</b>	<b>\$96,362.97</b>	<b>\$34,956.36</b>		<b>\$131,319.33</b>
<b>Total 1260 Physical Support</b>	<b>\$324,423.53</b>	<b>\$118,167.80</b>		<b>\$442,591.33</b>



LEA : 123467103      Souderton Area SD

Printed 11/9/2021 12:18:28 PM

General Fund (10)

1270 Multi-Handicapped Support	Elementary	Secondary	Federal	Total
100 <u>Personnel Services – Salaries</u>				
100 Personnel Services – Salaries	159,681.74	102,025.22		261,706.96
<b>Total Personnel Services – Salaries</b>	<b>\$159,681.74</b>	<b>\$102,025.22</b>		<b>\$261,706.96</b>
200 <u>Personnel Services – Employee Benefits</u>				
210 Group Insurance – Contracted Provider	5.04	2.76		7.80
220 Social Security Contributions	11,896.14	7,307.39		19,203.53
230 PSERS Retirement Contributions	55,017.40	35,208.93		90,226.33
250 Unemployment Compensation	39.05	28.34		67.39
260 Workers' Compensation	862.15	550.93		1,413.08
270 Group Insurance – Self-Insurance	25,576.00	1,505.25		27,081.25
<b>Total Personnel Services – Employee Benefits</b>	<b>\$93,395.78</b>	<b>\$44,603.60</b>		<b>\$137,999.38</b>
300 <u>Purchased Professional and Technical Services</u>				
330 Other Professional Services		55,251.25		55,251.25
<b>Total Purchased Professional and Technical Services</b>		<b>\$55,251.25</b>		<b>\$55,251.25</b>
600 <u>Supplies</u>				
610 General Supplies	1,639.74	1,256.91		2,896.65
650 Supplies & Fees – Technology Related	701.91	5,211.85		5,913.76
<b>Total Supplies</b>	<b>\$2,341.65</b>	<b>\$6,468.76</b>		<b>\$8,810.41</b>
<b>Total 1270 Multi-Handicapped Support</b>	<b>\$255,419.17</b>	<b>\$208,348.83</b>		<b>\$463,768.00</b>

LEA : 123467103     Souderton Area SD

Printed 11/9/2021 12:18:28 PM

General Fund (10)

1280 Early Intervention Support

300 Purchased Professional and Technical Services

	<u>Elementary</u>	<u>Secondary</u>	<u>Federal</u>	<u>Total</u>
322 Professional Educational Services – lus	86,736.17			86,736.17
Total Purchased Professional and Technical Services	\$86,736.17			\$86,736.17
Total 1280 Early Intervention Support	\$86,736.17			\$86,736.17

LEA : 123467103      Souderton Area SD

Printed 11/9/2021 12:18:28 PM

General Fund (10)

1290 Special Programs - Other Support	Elementary	Secondary	Federal	Total
100 <u>Personnel Services – Salaries</u>				
100 Personnel Services – Salaries	393,449.53	368,293.73		761,743.26
<b>Total Personnel Services – Salaries</b>	<b>\$393,449.53</b>	<b>\$368,293.73</b>		<b>\$761,743.26</b>
200 <u>Personnel Services – Employee Benefits</u>				
210 Group Insurance – Contracted Provider	1,628.91	2,226.78		3,855.69
220 Social Security Contributions	29,336.41	27,298.15		56,634.56
230 PSERS Retirement Contributions	131,014.79	125,206.01		256,220.80
250 Unemployment Compensation	850.74	879.12		1,729.86
260 Workers' Compensation	819.71	623.88		1,443.59
270 Group Insurance – Self-Insurance	85,038.75	42,362.25		127,401.00
291 Other Retirement Plans	2,400.00	6,100.00		8,500.00
<b>Total Personnel Services – Employee Benefits</b>	<b>\$251,089.31</b>	<b>\$204,696.19</b>		<b>\$455,785.50</b>
300 <u>Purchased Professional and Technical Services</u>				
322 Professional Educational Services – Ius	479,503.28	723,081.07	179,143.92	1,381,728.27
323 Professional Educational Services – Other Educational Agencies	5,022.00	64,743.62		69,765.62
329 Professional Educational Services – Other		1,475.00		1,475.00
330 Other Professional Services	18,183.13	43,567.50	53,806.28	115,556.91
<b>Total Purchased Professional and Technical Services</b>	<b>\$502,708.41</b>	<b>\$832,867.19</b>	<b>\$232,950.20</b>	<b>\$1,568,525.80</b>
500 <u>Other Purchased Services</u>				
530 Communications	70.43	182.21		252.64
550 Printing and Binding	77.77			77.77
561 Tuition To Other School Districts Within the State		3,883.44		3,883.44
562 Tuition To Pennsylvania Charter Schools	867,266.37	678,472.33		1,545,738.70
563 Tuition To Nonpublic Schools	604,371.25	1,658,976.11		2,263,347.36
566 Tuition To Institutions of Higher Education and Technical Institutes		2,925.00		2,925.00
567 Tuition To Approved Private Schools (APS) and PA Chartered Schools for the Deaf and Blind	53,727.50	208,871.00		262,598.50
568 Tuition To Private Residential Rehabilitative Institutions (PRRI) [In-State] and Detention Centers		3,495.00		3,495.00
580 Travel	3,029.62	1,554.13		4,583.75
594 IU Payment By Withholding for Institutionalized Children's Programs – Special Classes	605.47			605.47
<b>Total Other Purchased Services</b>	<b>\$1,529,148.41</b>	<b>\$2,558,359.22</b>		<b>\$4,087,507.63</b>
600 <u>Supplies</u>				
610 General Supplies	5,113.64	28,313.86	11,563.60	44,991.10
650 Supplies & Fees – Technology Related	1,959.36	812.00		2,771.36
<b>Total Supplies</b>	<b>\$7,073.00</b>	<b>\$29,125.86</b>	<b>\$11,563.60</b>	<b>\$47,762.46</b>
800 <u>Other Objects</u>				
810 Dues and Fees		42.00		42.00
820 Claims and Judgments Against the LEA	2,114.49	5,000.00		7,114.49
<b>Total Other Objects</b>	<b>\$2,114.49</b>	<b>\$5,042.00</b>		<b>\$7,156.49</b>
<b>Total 1290 Special Programs - Other Support</b>	<b>\$2,685,583.15</b>	<b>\$3,998,384.19</b>	<b>\$244,513.80</b>	<b>\$6,928,481.14</b>

LEA : 123467103     Souderton Area SD

Printed 11/9/2021 12:18:28 PM

General Fund (10)

1300 Vocational Education

500 Other Purchased Services

	<u>Elementary</u>	<u>Secondary</u>	<u>Federal</u>	<u>Total</u>
564 Tuition To Career and Technology Centers		1,856,597.38		1,856,597.38
<b>Total Other Purchased Services</b>		<b>\$1,856,597.38</b>		<b>\$1,856,597.38</b>
<b>Total 1300 Vocational Education</b>		<b>\$1,856,597.38</b>		<b>\$1,856,597.38</b>

LEA : 123467103      Souderton Area SD

Printed 11/9/2021 12:18:28 PM

General Fund (10)

1400 Other Instructional Programs – Elementary / Secondary	Elementary	Secondary	Federal	Total
100 <u>Personnel Services – Salaries</u>				
100 Personnel Services – Salaries	80,111.24	35,115.55		115,226.79
<b>Total Personnel Services – Salaries</b>	<b>\$80,111.24</b>	<b>\$35,115.55</b>		<b>\$115,226.79</b>
200 <u>Personnel Services – Employee Benefits</u>				
210 Group Insurance – Contracted Provider	169.84			169.84
220 Social Security Contributions	5,999.95	2,222.08		8,222.03
230 PSERS Retirement Contributions	21,015.89	6,783.34		27,799.23
250 Unemployment Compensation	10.13	20.84		30.97
260 Workers' Compensation	297.89	169.22		467.11
291 Other Retirement Plans	1,950.00			1,950.00
<b>Total Personnel Services – Employee Benefits</b>	<b>\$29,443.70</b>	<b>\$9,195.48</b>		<b>\$38,639.18</b>
300 <u>Purchased Professional and Technical Services</u>				
322 Professional Educational Services – Ius		14,172.00		14,172.00
323 Professional Educational Services – Other Educational Agencies	15.00	241,791.95		241,806.95
<b>Total Purchased Professional and Technical Services</b>	<b>\$15.00</b>	<b>\$255,963.95</b>		<b>\$255,978.95</b>
500 <u>Other Purchased Services</u>				
510 Student Transportation Services	1,085.00			1,085.00
599 Other Miscellaneous Purchased Services	500.00			500.00
<b>Total Other Purchased Services</b>	<b>\$1,585.00</b>			<b>\$1,585.00</b>
600 <u>Supplies</u>				
610 General Supplies		1,488.18		1,488.18
<b>Total Supplies</b>		<b>\$1,488.18</b>		<b>\$1,488.18</b>
800 <u>Other Objects</u>				
810 Dues and Fees	925.24			925.24
<b>Total Other Objects</b>	<b>\$925.24</b>			<b>\$925.24</b>
<b>Total 1400 Other Instructional Programs – Elementary / Secondary</b>	<b>\$112,080.18</b>	<b>\$301,763.16</b>		<b>\$413,843.34</b>

LEA : 123467103     Souderton Area SD

Printed 11/9/2021 12:18:28 PM

General Fund (10)

1430 Homebound Instruction	<u>Elementary</u>	<u>Secondary</u>	<u>Federal</u>	<u>Total</u>
<b>100 <u>Personnel Services – Salaries</u></b>				
100 Personnel Services – Salaries	6,478.00	11,931.00		18,409.00
<b>Total Personnel Services – Salaries</b>	<b>\$6,478.00</b>	<b>\$11,931.00</b>		<b>\$18,409.00</b>
<b>200 <u>Personnel Services – Employee Benefits</u></b>				
220 Social Security Contributions	483.41	912.87		1,396.28
230 PSERS Retirement Contributions	2,235.56	4,114.84		6,350.40
250 Unemployment Compensation	0.58	8.31		8.89
260 Workers' Compensation	34.96	62.59		97.55
<b>Total Personnel Services – Employee Benefits</b>	<b>\$2,754.51</b>	<b>\$5,098.61</b>		<b>\$7,853.12</b>
<b>300 <u>Purchased Professional and Technical Services</u></b>				
323 Professional Educational Services – Other Educational Agencies	15.00	241,791.95		241,806.95
<b>Total Purchased Professional and Technical Services</b>	<b>\$15.00</b>	<b>\$241,791.95</b>		<b>\$241,806.95</b>
<b>Total 1430 Homebound Instruction</b>	<b>\$9,247.51</b>	<b>\$258,821.56</b>		<b>\$268,069.07</b>

LEA : 123467103     Souderton Area SD

Printed 11/9/2021 12:18:28 PM

General Fund (10)

1440 Alternative Regular Education Programs	<u>Elementary</u>	<u>Secondary</u>	<u>Federal</u>	<u>Total</u>
300 <u>Purchased Professional and Technical Services</u>				
322 Professional Educational Services – lus		14,172.00		14,172.00
Total Purchased Professional and Technical Services		\$14,172.00		\$14,172.00
Total 1440 Alternative Regular Education Programs		\$14,172.00		\$14,172.00

LEA : 123467103     Souderton Area SD

Printed 11/9/2021 12:18:28 PM

General Fund (10)

1441 Adjudicated / Court-Placed Programs

	<u>Elementary</u>	<u>Secondary</u>	<u>Federal</u>	<u>Total</u>
300 <u>Purchased Professional and Technical Services</u>				
322 Professional Educational Services – lus		14,172.00		14,172.00
Total Purchased Professional and Technical Services		\$14,172.00		\$14,172.00
Total 1441 Adjudicated / Court-Placed Programs		\$14,172.00		\$14,172.00



LEA : 123467103     Souderton Area SD

Printed 11/9/2021 12:18:28 PM

General Fund (10)

1490 Additional Other Instructional Programs	Elementary	Secondary	Federal	Total
<b>100 Personnel Services – Salaries</b>				
100 Personnel Services – Salaries	73,633.24	23,184.55		96,817.79
<b>Total Personnel Services – Salaries</b>	<b>\$73,633.24</b>	<b>\$23,184.55</b>		<b>\$96,817.79</b>
<b>200 Personnel Services – Employee Benefits</b>				
210 Group Insurance – Contracted Provider	169.84			169.84
220 Social Security Contributions	5,516.54	1,309.21		6,825.75
230 PSERS Retirement Contributions	18,780.33	2,668.50		21,448.83
250 Unemployment Compensation	9.55	12.53		22.08
260 Workers' Compensation	262.93	106.63		369.56
291 Other Retirement Plans	1,950.00			1,950.00
<b>Total Personnel Services – Employee Benefits</b>	<b>\$26,689.19</b>	<b>\$4,096.87</b>		<b>\$30,786.06</b>
<b>500 Other Purchased Services</b>				
510 Student Transportation Services	1,085.00			1,085.00
599 Other Miscellaneous Purchased Services	500.00			500.00
<b>Total Other Purchased Services</b>	<b>\$1,585.00</b>			<b>\$1,585.00</b>
<b>600 Supplies</b>				
610 General Supplies		1,488.18		1,488.18
<b>Total Supplies</b>		<b>\$1,488.18</b>		<b>\$1,488.18</b>
<b>800 Other Objects</b>				
810 Dues and Fees	925.24			925.24
<b>Total Other Objects</b>	<b>\$925.24</b>			<b>\$925.24</b>
<b>Total 1490 Additional Other Instructional Programs</b>	<b>\$102,832.67</b>	<b>\$28,769.60</b>		<b>\$131,602.27</b>

LEA : 123467103     Souderton Area SD

Printed 11/9/2021 12:18:28 PM

General Fund (10)

1500 Nonpublic School Programs

Elementary                      Secondary                      Federal                      Total

300 Purchased Professional and Technical Services

322 Professional Educational Services – lus                      4,264.00                      4,264.00

330 Other Professional Services                      5,520.00                      5,520.00

**Total Purchased Professional and Technical Services                      \$9,784.00                      \$9,784.00**

600 Supplies

610 General Supplies                      6,954.76                      6,954.76

**Total Supplies                      \$6,954.76                      \$6,954.76**

**Total 1500 Nonpublic School Programs                      \$16,738.76                      \$16,738.76**

LEA : 123467103      Souderton Area SD

Printed 11/9/2021 12:18:28 PM

General Fund (10)

1600 Adult Education Programs	<u>Elementary</u>	<u>Secondary</u>	<u>Federal</u>	<u>Total</u>
<b>100 <u>Personnel Services – Salaries</u></b>				
100 Personnel Services – Salaries				61,433.84
<b>Total Personnel Services – Salaries</b>				<b>\$61,433.84</b>
<b>200 <u>Personnel Services – Employee Benefits</u></b>				
210 Group Insurance – Contracted Provider				296.19
220 Social Security Contributions				4,572.10
230 PSERS Retirement Contributions				18,424.20
250 Unemployment Compensation				123.87
260 Workers' Compensation				183.62
291 Other Retirement Plans				1,650.00
<b>Total Personnel Services – Employee Benefits</b>				<b>\$25,249.98</b>
<b>300 <u>Purchased Professional and Technical Services</u></b>				
330 Other Professional Services				17,655.00
<b>Total Purchased Professional and Technical Services</b>				<b>\$17,655.00</b>
<b>500 <u>Other Purchased Services</u></b>				
550 Printing and Binding				12,337.65
599 Other Miscellaneous Purchased Services				100.00
<b>Total Other Purchased Services</b>				<b>\$12,437.65</b>
<b>600 <u>Supplies</u></b>				
610 General Supplies				134.86
<b>Total Supplies</b>				<b>\$134.86</b>
<b>800 <u>Other Objects</u></b>				
810 Dues and Fees				1,898.82
<b>Total Other Objects</b>				<b>\$1,898.82</b>
<b>Total 1600 Adult Education Programs</b>				<b>\$118,810.15</b>

LEA : 123467103     Souderton Area SD

Printed 11/9/2021 12:18:35 PM

General Fund (10)

2000 Support Services

Total

100	<u>Personnel Services – Salaries</u>	
100	Personnel Services – Salaries	13,974,800.61
Total Personnel Services – Salaries		\$13,974,800.61
200	<u>Personnel Services – Employee Benefits</u>	
210	Group Insurance – Contracted Provider	54,889.03
220	Social Security Contributions	1,016,253.61
230	PSERS Retirement Contributions	4,711,547.08
240	Tuition Reimbursement	259,863.52
250	Unemployment Compensation	30,960.07
260	Workers' Compensation	47,373.15
270	Group Insurance – Self-Insurance	2,686,039.50
280	Other Post-Employment Benefits (OPEB)	1,500.00
291	Other Retirement Plans	109,717.90
Total Personnel Services – Employee Benefits		\$8,918,143.86
300	<u>Purchased Professional and Technical Services</u>	
322	Professional Educational Services – Ius	165,355.65
329	Professional Educational Services – Other	4,513.75
330	Other Professional Services	1,225,288.77
340	Technical Services	43,598.40
350	Security / Safety Services	102,454.52
360	Employee Training and Development Services	10,440.00
Total Purchased Professional and Technical Services		\$1,551,651.09
400	<u>Purchased Property Services</u>	
410	Cleaning Services	279,261.98
420	Utility Services	137,599.79
430	Repairs and Maintenance Services	603,462.68
440	Rentals	317,312.99
460	Extermination Services	5,232.60
Total Purchased Property Services		\$1,342,870.04
500	<u>Other Purchased Services</u>	
511	Student Transportation Services from Another LEA Within the State	6,947.50
513	Contracted Carriers	6,968,731.40
516	Student Transportation Services From the IU	233,389.31
519	Student Transportation Services From Other Sources	12,564.00
520	Insurance – General	82,265.60
522	Automotive Liability Insurance	19,918.00
523	General Property and Liability Insurance	259,120.00
530	Communications	661,196.20
549	Other Advertising/Public Relations	3,196.79
550	Printing and Binding	22,652.93
580	Travel	5,019.93
595	IU Payments By Withholding	83,381.87
Total Other Purchased Services		\$8,358,383.53

LEA : 123467103      Souderton Area SD

Printed 11/9/2021 12:18:35 PM

General Fund (10)

2000 Support Services

Total

600 <u>Supplies</u>	
610 General Supplies	3,061,175.51
620 Energy	1,257,858.63
630 Food	27,438.55
640 Books and Periodicals	45,014.87
650 Supplies & Fees – Technology Related	1,098,577.10
<b>Total Supplies</b>	<b>\$5,490,064.66</b>
700 <u>Property</u>	
752 Capital Equipment – Original and Additional	40,568.00
758 Capitalized Technology Software - Original	88,200.00
762 Capitalized Equipment - Replacement	83,145.20
766 Capitalized Technology Equipment – Replacement	100,387.23
768 Capitalized Technology Software - Replacement	6,892.21
<b>Total Property</b>	<b>\$319,192.64</b>
800 <u>Other Objects</u>	
810 Dues and Fees	68,869.96
<b>Total Other Objects</b>	<b>\$68,869.96</b>
<b>Total 2000 Support Services</b>	<b>\$40,023,976.39</b>

LEA : 123467103     Souderton Area SD

Printed 11/9/2021 12:18:35 PM

General Fund (10)

2100 Support Services – Students	Elementary	Secondary	Federal	Total
<b>100 Personnel Services – Salaries</b>				
100 Personnel Services – Salaries	953,709.40	1,246,601.53	184,861.82	2,797,802.03
<b>Total Personnel Services – Salaries</b>	<b>\$953,709.40</b>	<b>\$1,246,601.53</b>	<b>\$184,861.82</b>	<b>\$2,797,802.03</b>
<b>200 Personnel Services – Employee Benefits</b>				
210 Group Insurance – Contracted Provider	2,498.02	3,065.39		6,414.09
220 Social Security Contributions	72,152.92	95,366.69	6,599.79	204,338.19
230 PSERS Retirement Contributions	341,578.54	445,840.55	31,521.92	960,051.85
250 Unemployment Compensation	1,741.60	2,286.71		4,859.73
260 Workers' Compensation	3,289.65	4,213.81		8,733.81
270 Group Insurance – Self-Insurance	153,593.75	199,646.50		454,605.00
291 Other Retirement Plans	3,450.00	3,450.00		6,900.00
<b>Total Personnel Services – Employee Benefits</b>	<b>\$578,304.48</b>	<b>\$753,869.65</b>	<b>\$38,121.71</b>	<b>\$1,645,902.67</b>
<b>300 Purchased Professional and Technical Services</b>				
322 Professional Educational Services – Ius	10,311.83	154,677.40		164,989.23
330 Other Professional Services	4,578.56	3,462.50		501,633.56
<b>Total Purchased Professional and Technical Services</b>	<b>\$14,890.39</b>	<b>\$158,139.90</b>		<b>\$666,622.79</b>
<b>500 Other Purchased Services</b>				
530 Communications	168.88	3.88		172.76
550 Printing and Binding	160.43	160.43		320.86
580 Travel	173.12	6.38		179.50
<b>Total Other Purchased Services</b>	<b>\$502.43</b>	<b>\$170.69</b>		<b>\$673.12</b>
<b>600 Supplies</b>				
610 General Supplies	13,452.18	1,283.94		14,751.28
640 Books and Periodicals	445.77	16.05		461.82
650 Supplies & Fees – Technology Related		11,373.27		11,373.27
<b>Total Supplies</b>	<b>\$13,897.95</b>	<b>\$12,673.26</b>		<b>\$26,586.37</b>
<b>800 Other Objects</b>				
810 Dues and Fees	300.00	300.00		600.00
<b>Total Other Objects</b>	<b>\$300.00</b>	<b>\$300.00</b>		<b>\$600.00</b>
<b>Total 2100 Support Services – Students</b>	<b>\$1,561,604.65</b>	<b>\$2,171,755.03</b>	<b>\$222,983.53</b>	<b>\$5,138,186.98</b>

LEA : 123467103      Souderton Area SD

Printed 11/9/2021 12:18:35 PM

General Fund (10)

2110 Supervision of Student Services	Elementary	Secondary	Federal	Total
100 <u>Personnel Services – Salaries</u>				
100 Personnel Services – Salaries	107,901.91	107,901.90		215,803.81
<b>Total Personnel Services – Salaries</b>	<b>\$107,901.91</b>	<b>\$107,901.90</b>		<b>\$215,803.81</b>
200 <u>Personnel Services – Employee Benefits</u>				
210 Group Insurance – Contracted Provider	697.58	697.58		1,395.16
220 Social Security Contributions	7,534.46	7,534.45		15,068.91
230 PSERS Retirement Contributions	35,697.48	35,697.48		71,394.96
250 Unemployment Compensation	200.79	200.78		401.57
260 Workers' Compensation	301.79	301.78		603.57
270 Group Insurance – Self-Insurance	18,171.50	18,171.50		36,343.00
291 Other Retirement Plans	3,450.00	3,450.00		6,900.00
<b>Total Personnel Services – Employee Benefits</b>	<b>\$66,053.60</b>	<b>\$66,053.57</b>		<b>\$132,107.17</b>
500 <u>Other Purchased Services</u>				
530 Communications	3.88	3.88		7.76
550 Printing and Binding	160.43	160.43		320.86
580 Travel	6.39	6.38		12.77
<b>Total Other Purchased Services</b>	<b>\$170.70</b>	<b>\$170.69</b>		<b>\$341.39</b>
600 <u>Supplies</u>				
610 General Supplies	908.96	908.95		1,817.91
640 Books and Periodicals	16.06	16.05		32.11
<b>Total Supplies</b>	<b>\$925.02</b>	<b>\$925.00</b>		<b>\$1,850.02</b>
800 <u>Other Objects</u>				
810 Dues and Fees	300.00	300.00		600.00
<b>Total Other Objects</b>	<b>\$300.00</b>	<b>\$300.00</b>		<b>\$600.00</b>
<b>Total 2110 Supervision of Student Services</b>	<b>\$175,351.23</b>	<b>\$175,351.16</b>		<b>\$350,702.39</b>

LEA : 123467103      Souderton Area SD

Printed 11/9/2021 12:18:35 PM

General Fund (10)

2111 Supervision of Student Services – Head of Component

	<u>Elementary</u>	<u>Secondary</u>	<u>Federal</u>	<u>Total</u>
<b>100 <u>Personnel Services – Salaries</u></b>				
100 Personnel Services – Salaries	107,901.91	107,901.90		215,803.81
<b>Total Personnel Services – Salaries</b>	<b>\$107,901.91</b>	<b>\$107,901.90</b>		<b>\$215,803.81</b>
<b>200 <u>Personnel Services – Employee Benefits</u></b>				
210 Group Insurance – Contracted Provider	697.58	697.58		1,395.16
220 Social Security Contributions	7,534.46	7,534.45		15,068.91
230 PSERS Retirement Contributions	35,697.48	35,697.48		71,394.96
250 Unemployment Compensation	200.79	200.78		401.57
260 Workers' Compensation	301.79	301.78		603.57
270 Group Insurance – Self-Insurance	18,171.50	18,171.50		36,343.00
291 Other Retirement Plans	3,450.00	3,450.00		6,900.00
<b>Total Personnel Services – Employee Benefits</b>	<b>\$66,053.60</b>	<b>\$66,053.57</b>		<b>\$132,107.17</b>
<b>500 <u>Other Purchased Services</u></b>				
530 Communications	3.88	3.88		7.76
550 Printing and Binding	160.43	160.43		320.86
580 Travel	6.39	6.38		12.77
<b>Total Other Purchased Services</b>	<b>\$170.70</b>	<b>\$170.69</b>		<b>\$341.39</b>
<b>600 <u>Supplies</u></b>				
610 General Supplies	908.96	908.95		1,817.91
640 Books and Periodicals	16.06	16.05		32.11
<b>Total Supplies</b>	<b>\$925.02</b>	<b>\$925.00</b>		<b>\$1,850.02</b>
<b>800 <u>Other Objects</u></b>				
810 Dues and Fees	300.00	300.00		600.00
<b>Total Other Objects</b>	<b>\$300.00</b>	<b>\$300.00</b>		<b>\$600.00</b>
<b>Total 2111 Supervision of Student Services – Head of Component</b>	<b>\$175,351.23</b>	<b>\$175,351.16</b>		<b>\$350,702.39</b>



LEA : 123467103     Souderton Area SD

Printed 11/9/2021 12:18:35 PM

General Fund (10)

2120 Guidance Services

	<u>Elementary</u>	<u>Secondary</u>	<u>Federal</u>	<u>Total</u>
<b>100 <u>Personnel Services – Salaries</u></b>				
100 Personnel Services – Salaries	482,066.06	994,655.18	17,428.32	1,494,149.56
<b>Total Personnel Services – Salaries</b>	<b>\$482,066.06</b>	<b>\$994,655.18</b>	<b>\$17,428.32</b>	<b>\$1,494,149.56</b>
<b>200 <u>Personnel Services – Employee Benefits</u></b>				
210 Group Insurance – Contracted Provider	1,067.14	2,047.06		3,114.20
220 Social Security Contributions	35,496.74	73,571.91	583.30	109,651.95
230 PSERS Retirement Contributions	168,992.32	343,249.15	2,631.33	514,872.80
250 Unemployment Compensation	905.75	1,780.41		2,686.16
260 Workers' Compensation	1,505.85	2,974.67		4,480.52
270 Group Insurance – Self-Insurance	86,534.25	156,740.00		243,274.25
<b>Total Personnel Services – Employee Benefits</b>	<b>\$294,502.05</b>	<b>\$580,363.20</b>	<b>\$3,214.63</b>	<b>\$878,079.88</b>
<b>600 <u>Supplies</u></b>				
610 General Supplies	813.79	374.99		1,188.78
640 Books and Periodicals	429.71			429.71
650 Supplies & Fees – Technology Related		11,373.27		11,373.27
<b>Total Supplies</b>	<b>\$1,243.50</b>	<b>\$11,748.26</b>		<b>\$12,991.76</b>
<b>Total 2120 Guidance Services</b>	<b>\$777,811.61</b>	<b>\$1,586,766.64</b>	<b>\$20,642.95</b>	<b>\$2,385,221.20</b>

LEA : 123467103     Souderton Area SD

Printed 11/9/2021 12:18:35 PM

General Fund (10)

2130 Attendance Services

	<u>Elementary</u>	<u>Secondary</u>	<u>Federal</u>	<u>Total</u>
<b>100 <u>Personnel Services – Salaries</u></b>				
100 Personnel Services – Salaries				412,629.28
<b>Total Personnel Services – Salaries</b>				<b>\$412,629.28</b>
<b>200 <u>Personnel Services – Employee Benefits</u></b>				
210 Group Insurance – Contracted Provider				850.68
220 Social Security Contributions				30,218.79
230 PSERS Retirement Contributions				141,110.84
250 Unemployment Compensation				831.42
260 Workers' Compensation				1,230.35
270 Group Insurance – Self-Insurance				101,364.75
<b>Total Personnel Services – Employee Benefits</b>				<b>\$275,606.83</b>
<b>600 <u>Supplies</u></b>				
610 General Supplies				15.16
<b>Total Supplies</b>				<b>\$15.16</b>
<b>Total 2130 Attendance Services</b>				<b>\$688,251.27</b>

LEA : 123467103      Souderton Area SD

Printed 11/9/2021 12:18:35 PM

General Fund (10)

2140 Psychological Services	Elementary	Secondary	Federal	Total
<b>100 Personnel Services – Salaries</b>				
100 Personnel Services – Salaries	363,741.43	144,044.45	167,433.50	675,219.38
<b>Total Personnel Services – Salaries</b>	<b>\$363,741.43</b>	<b>\$144,044.45</b>	<b>\$167,433.50</b>	<b>\$675,219.38</b>
<b>200 Personnel Services – Employee Benefits</b>				
210 Group Insurance – Contracted Provider	733.30	320.75		1,054.05
220 Social Security Contributions	29,121.72	14,260.33	6,016.49	49,398.54
230 PSERS Retirement Contributions	136,888.74	66,893.92	28,890.59	232,673.25
250 Unemployment Compensation	635.06	305.52		940.58
260 Workers' Compensation	1,482.01	937.36		2,419.37
270 Group Insurance – Self-Insurance	48,888.00	24,735.00		73,623.00
<b>Total Personnel Services – Employee Benefits</b>	<b>\$217,748.83</b>	<b>\$107,452.88</b>	<b>\$34,907.08</b>	<b>\$360,108.79</b>
<b>300 Purchased Professional and Technical Services</b>				
322 Professional Educational Services – Ius	10,311.83	154,677.40		164,989.23
330 Other Professional Services	4,578.56	3,462.50		8,041.06
<b>Total Purchased Professional and Technical Services</b>	<b>\$14,890.39</b>	<b>\$158,139.90</b>		<b>\$173,030.29</b>
<b>500 Other Purchased Services</b>				
530 Communications	165.00			165.00
580 Travel	166.73			166.73
<b>Total Other Purchased Services</b>	<b>\$331.73</b>			<b>\$331.73</b>
<b>600 Supplies</b>				
610 General Supplies	11,729.43			11,729.43
<b>Total Supplies</b>	<b>\$11,729.43</b>			<b>\$11,729.43</b>
<b>Total 2140 Psychological Services</b>	<b>\$608,441.81</b>	<b>\$409,637.23</b>	<b>\$202,340.58</b>	<b>\$1,220,419.62</b>

LEA : 123467103     Souderton Area SD

Printed 11/9/2021 12:18:35 PM

General Fund (10)

2160 Social Work Services

	<u>Elementary</u>	<u>Secondary</u>	<u>Federal</u>	<u>Total</u>
300 <u>Purchased Professional and Technical Services</u>				
330 Other Professional Services				493,592.50
Total Purchased Professional and Technical Services				\$493,592.50
Total 2160 Social Work Services				\$493,592.50

LEA : 123467103      Souderton Area SD

Printed 11/9/2021 12:18:35 PM

General Fund (10)

2200 Support Services – Instructional Staff	Elementary	Secondary	Federal	Total
<b>100 Personnel Services – Salaries</b>				
100 Personnel Services – Salaries	1,163,907.76	1,148,465.44	44,457.00	2,356,830.20
<b>Total Personnel Services – Salaries</b>	<b>\$1,163,907.76</b>	<b>\$1,148,465.44</b>	<b>\$44,457.00</b>	<b>\$2,356,830.20</b>
<b>200 Personnel Services – Employee Benefits</b>				
210 Group Insurance – Contracted Provider	4,105.90	3,786.15		7,892.05
220 Social Security Contributions	84,835.37	83,563.47	3,235.35	171,634.19
230 PSERS Retirement Contributions	397,809.71	389,978.95	16,227.22	804,015.88
240 Tuition Reimbursement	147,635.69	95,822.83		243,458.52
250 Unemployment Compensation	2,454.01	1,863.65	7.55	4,325.21
260 Workers' Compensation	3,480.62	4,019.59	240.10	7,740.31
270 Group Insurance – Self-Insurance	190,328.88	185,719.62		376,048.50
291 Other Retirement Plans	12,967.08	11,817.07		24,784.15
<b>Total Personnel Services – Employee Benefits</b>	<b>\$843,617.26</b>	<b>\$776,571.33</b>	<b>\$19,710.22</b>	<b>\$1,639,898.81</b>
<b>300 Purchased Professional and Technical Services</b>				
330 Other Professional Services	10,244.00	380.00	16,240.00	26,864.00
360 Employee Training and Development Services	2,110.00	1,840.00	1,564.00	5,514.00
<b>Total Purchased Professional and Technical Services</b>	<b>\$12,354.00</b>	<b>\$2,220.00</b>	<b>\$17,804.00</b>	<b>\$32,378.00</b>
<b>400 Purchased Property Services</b>				
430 Repairs and Maintenance Services	4,437.54	30,028.90		34,466.44
440 Rentals	173,356.56	53,579.91		226,936.47
<b>Total Purchased Property Services</b>	<b>\$177,794.10</b>	<b>\$83,608.81</b>		<b>\$261,402.91</b>
<b>500 Other Purchased Services</b>				
550 Printing and Binding	2,570.23	84.05		2,654.28
580 Travel	1,880.12	963.88		2,844.00
<b>Total Other Purchased Services</b>	<b>\$4,450.35</b>	<b>\$1,047.93</b>		<b>\$5,498.28</b>
<b>600 Supplies</b>				
610 General Supplies	355,084.20	3,731.24	31,914.22	390,729.66
640 Books and Periodicals	24,442.06	18,382.37	405.00	43,229.43
650 Supplies & Fees – Technology Related	139,864.67	106,844.67	19,825.00	266,534.34
<b>Total Supplies</b>	<b>\$519,390.93</b>	<b>\$128,958.28</b>	<b>\$52,144.22</b>	<b>\$700,493.43</b>
<b>800 Other Objects</b>				
810 Dues and Fees	1,687.50	607.50		2,295.00
<b>Total Other Objects</b>	<b>\$1,687.50</b>	<b>\$607.50</b>		<b>\$2,295.00</b>
<b>Total 2200 Support Services – Instructional Staff</b>	<b>\$2,723,201.90</b>	<b>\$2,141,479.29</b>	<b>\$134,115.44</b>	<b>\$4,998,796.63</b>

LEA : 123467103     Souderton Area SD

Printed 11/9/2021 12:18:35 PM

General Fund (10)

2210 Supervision of Educational Media Services	<u>Elementary</u>	<u>Secondary</u>	<u>Federal</u>	<u>Total</u>
<b>100 <u>Personnel Services – Salaries</u></b>				
100 Personnel Services – Salaries	42,206.92	42,206.92		84,413.84
<b>Total Personnel Services – Salaries</b>	<b>\$42,206.92</b>	<b>\$42,206.92</b>		<b>\$84,413.84</b>
<b>200 <u>Personnel Services – Employee Benefits</u></b>				
210 Group Insurance – Contracted Provider	297.86	297.85		595.71
220 Social Security Contributions	3,086.48	3,086.48		6,172.96
230 PSERS Retirement Contributions	14,185.11	14,185.10		28,370.21
250 Unemployment Compensation	78.94	78.93		157.87
260 Workers' Compensation	118.94	118.94		237.88
270 Group Insurance – Self-Insurance	10,192.38	10,192.37		20,384.75
291 Other Retirement Plans	1,900.00	1,900.00		3,800.00
<b>Total Personnel Services – Employee Benefits</b>	<b>\$29,859.71</b>	<b>\$29,859.67</b>		<b>\$59,719.38</b>
<b>300 <u>Purchased Professional and Technical Services</u></b>				
330 Other Professional Services		380.00		380.00
<b>Total Purchased Professional and Technical Services</b>		<b>\$380.00</b>		<b>\$380.00</b>
<b>600 <u>Supplies</u></b>				
610 General Supplies		1,451.36		1,451.36
<b>Total Supplies</b>		<b>\$1,451.36</b>		<b>\$1,451.36</b>
<b>Total 2210 Supervision of Educational Media Services</b>	<b>\$72,066.63</b>	<b>\$73,897.95</b>		<b>\$145,964.58</b>

LEA : 123467103     Souderton Area SD

Printed 11/9/2021 12:18:35 PM

General Fund (10)

2211 Supervision of Educational Media Services – Head of Component	<u>Elementary</u>	<u>Secondary</u>	<u>Federal</u>	<u>Total</u>
<b>100 <u>Personnel Services – Salaries</u></b>				
100 Personnel Services – Salaries	42,206.92	42,206.92		84,413.84
<b>Total Personnel Services – Salaries</b>	<b>\$42,206.92</b>	<b>\$42,206.92</b>		<b>\$84,413.84</b>
<b>200 <u>Personnel Services – Employee Benefits</u></b>				
210 Group Insurance – Contracted Provider	297.86	297.85		595.71
220 Social Security Contributions	3,086.48	3,086.48		6,172.96
230 PSERS Retirement Contributions	14,185.11	14,185.10		28,370.21
250 Unemployment Compensation	78.94	78.93		157.87
260 Workers' Compensation	118.94	118.94		237.88
270 Group Insurance – Self-Insurance	10,192.38	10,192.37		20,384.75
291 Other Retirement Plans	1,900.00	1,900.00		3,800.00
<b>Total Personnel Services – Employee Benefits</b>	<b>\$29,859.71</b>	<b>\$29,859.67</b>		<b>\$59,719.38</b>
<b>300 <u>Purchased Professional and Technical Services</u></b>				
330 Other Professional Services		380.00		380.00
<b>Total Purchased Professional and Technical Services</b>		<b>\$380.00</b>		<b>\$380.00</b>
<b>600 <u>Supplies</u></b>				
610 General Supplies		1,451.36		1,451.36
<b>Total Supplies</b>		<b>\$1,451.36</b>		<b>\$1,451.36</b>
<b>Total 2211 Supervision of Educational Media Services – Head of Component</b>	<b>\$72,066.63</b>	<b>\$73,897.95</b>		<b>\$145,964.58</b>

LEA : 123467103     Souderton Area SD

Printed 11/9/2021 12:18:35 PM

General Fund (10)

2220 Technology Support Services	Elementary	Secondary	Federal	Total
<b>100 Personnel Services – Salaries</b>				
100 Personnel Services – Salaries	242,738.77	290,879.50		533,618.27
<b>Total Personnel Services – Salaries</b>	<b>\$242,738.77</b>	<b>\$290,879.50</b>		<b>\$533,618.27</b>
<b>200 Personnel Services – Employee Benefits</b>				
210 Group Insurance – Contracted Provider	398.52	864.40		1,262.92
220 Social Security Contributions	17,906.51	21,587.63		39,494.14
230 PSERS Retirement Contributions	83,769.48	96,502.99		180,272.47
250 Unemployment Compensation	405.43	450.36		855.79
260 Workers' Compensation	840.43	1,023.30		1,863.73
270 Group Insurance – Self-Insurance	14,523.75	61,354.00		75,877.75
291 Other Retirement Plans	2,250.00	1,100.00		3,350.00
<b>Total Personnel Services – Employee Benefits</b>	<b>\$120,094.12</b>	<b>\$182,882.68</b>		<b>\$302,976.80</b>
<b>400 Purchased Property Services</b>				
430 Repairs and Maintenance Services		21,723.80		21,723.80
<b>Total Purchased Property Services</b>		<b>\$21,723.80</b>		<b>\$21,723.80</b>
<b>500 Other Purchased Services</b>				
580 Travel	1,058.75	499.96		1,558.71
<b>Total Other Purchased Services</b>	<b>\$1,058.75</b>	<b>\$499.96</b>		<b>\$1,558.71</b>
<b>600 Supplies</b>				
610 General Supplies	881.10			881.10
650 Supplies & Fees – Technology Related	41,782.97			41,782.97
<b>Total Supplies</b>	<b>\$42,664.07</b>			<b>\$42,664.07</b>
<b>Total 2220 Technology Support Services</b>	<b>\$406,555.71</b>	<b>\$495,985.94</b>		<b>\$902,541.65</b>



LEA : 123467103     Souderton Area SD

Printed 11/9/2021 12:18:35 PM

General Fund (10)

2240 Computer-Assisted Instruction Support Services	<u>Elementary</u>	<u>Secondary</u>	<u>Federal</u>	<u>Total</u>
400 <u>Purchased Property Services</u>				
440 Rentals	53,579.92	53,579.91		107,159.83
Total Purchased Property Services	\$53,579.92	\$53,579.91		\$107,159.83
500 <u>Other Purchased Services</u>				
580 Travel	57.23			57.23
Total Other Purchased Services	\$57.23			\$57.23
Total 2240 Computer-Assisted Instruction Support Services	\$53,637.15	\$53,579.91		\$107,217.06

LEA : 123467103     Souderton Area SD

Printed 11/9/2021 12:18:35 PM

General Fund (10)

2250 School Library Services	Elementary	Secondary	Federal	Total
<b>100 Personnel Services – Salaries</b>				
100 Personnel Services – Salaries	421,228.25	232,798.00		654,026.25
<b>Total Personnel Services – Salaries</b>	<b>\$421,228.25</b>	<b>\$232,798.00</b>		<b>\$654,026.25</b>
<b>200 Personnel Services – Employee Benefits</b>				
210 Group Insurance – Contracted Provider	1,332.58	621.95		1,954.53
220 Social Security Contributions	30,462.58	16,897.79		47,360.37
230 PSERS Retirement Contributions	138,590.77	80,338.78		218,929.55
250 Unemployment Compensation	1,107.64	520.42		1,628.06
260 Workers' Compensation	743.27	534.73		1,278.00
270 Group Insurance – Self-Insurance	107,284.00	52,310.50		159,594.50
<b>Total Personnel Services – Employee Benefits</b>	<b>\$279,520.84</b>	<b>\$151,224.17</b>		<b>\$430,745.01</b>
<b>600 Supplies</b>				
610 General Supplies	889.85	1,472.88		2,362.73
640 Books and Periodicals	24,174.56	7,891.72		32,066.28
650 Supplies & Fees – Technology Related	34,307.18	42,315.39		76,622.57
<b>Total Supplies</b>	<b>\$59,371.59</b>	<b>\$51,679.99</b>		<b>\$111,051.58</b>
<b>Total 2250 School Library Services</b>	<b>\$760,120.68</b>	<b>\$435,702.16</b>		<b>\$1,195,822.84</b>

LEA : 123467103     Souderton Area SD

Printed 11/9/2021 12:18:35 PM

General Fund (10)

2260 Instruction and Curriculum Development Services	Elementary	Secondary	Federal	Total
<b>100 <u>Personnel Services – Salaries</u></b>				
100 Personnel Services – Salaries	328,732.82	324,612.02		653,344.84
<b>Total Personnel Services – Salaries</b>	<b>\$328,732.82</b>	<b>\$324,612.02</b>		<b>\$653,344.84</b>
<b>200 <u>Personnel Services – Employee Benefits</u></b>				
210 Group Insurance – Contracted Provider	1,683.10	1,741.43		3,424.53
220 Social Security Contributions	23,870.59	23,538.61		47,409.20
230 PSERS Retirement Contributions	110,019.60	111,591.88		221,611.48
250 Unemployment Compensation	537.80	582.24		1,120.04
260 Workers' Compensation	1,016.35	931.83		1,948.18
270 Group Insurance – Self-Insurance	36,197.75	36,535.50		72,733.25
291 Other Retirement Plans	8,817.08	8,817.07		17,634.15
<b>Total Personnel Services – Employee Benefits</b>	<b>\$182,142.27</b>	<b>\$183,738.56</b>		<b>\$365,880.83</b>
<b>300 <u>Purchased Professional and Technical Services</u></b>				
330 Other Professional Services	944.00			944.00
<b>Total Purchased Professional and Technical Services</b>	<b>\$944.00</b>			<b>\$944.00</b>
<b>400 <u>Purchased Property Services</u></b>				
430 Repairs and Maintenance Services	4,437.54	8,305.10		12,742.64
440 Rentals	119,776.64			119,776.64
<b>Total Purchased Property Services</b>	<b>\$124,214.18</b>	<b>\$8,305.10</b>		<b>\$132,519.28</b>
<b>500 <u>Other Purchased Services</u></b>				
550 Printing and Binding	2,570.23	84.05		2,654.28
580 Travel	117.87	463.92		581.79
<b>Total Other Purchased Services</b>	<b>\$2,688.10</b>	<b>\$547.97</b>		<b>\$3,236.07</b>
<b>600 <u>Supplies</u></b>				
610 General Supplies	353,313.25	807.00		354,120.25
640 Books and Periodicals		10,490.65		10,490.65
650 Supplies & Fees – Technology Related	58,466.75	59,221.52		117,688.27
<b>Total Supplies</b>	<b>\$411,780.00</b>	<b>\$70,519.17</b>		<b>\$482,299.17</b>
<b>800 <u>Other Objects</u></b>				
810 Dues and Fees	1,687.50	607.50		2,295.00
<b>Total Other Objects</b>	<b>\$1,687.50</b>	<b>\$607.50</b>		<b>\$2,295.00</b>
<b>Total 2260 Instruction and Curriculum Development Services</b>	<b>\$1,052,188.87</b>	<b>\$588,330.32</b>		<b>\$1,640,519.19</b>

LEA : 123467103      Souderton Area SD

Printed 11/9/2021 12:18:35 PM

General Fund (10)

2270 Instructional Staff Professional Development Services	Elementary	Secondary	Federal	Total
<b>100 Personnel Services – Salaries</b>				
100 Personnel Services – Salaries	129,001.00	257,969.00	44,457.00	431,427.00
<b>Total Personnel Services – Salaries</b>	<b>\$129,001.00</b>	<b>\$257,969.00</b>	<b>\$44,457.00</b>	<b>\$431,427.00</b>
<b>200 Personnel Services – Employee Benefits</b>				
210 Group Insurance – Contracted Provider	393.84	260.52		654.36
220 Social Security Contributions	9,509.21	18,452.96	3,235.35	31,197.52
230 PSERS Retirement Contributions	51,244.75	87,360.20	16,227.22	154,832.17
240 Tuition Reimbursement	147,635.69	95,822.83		243,458.52
250 Unemployment Compensation	324.20	231.70	7.55	563.45
260 Workers' Compensation	761.63	1,410.79	240.10	2,412.52
270 Group Insurance – Self-Insurance	22,131.00	25,327.25		47,458.25
<b>Total Personnel Services – Employee Benefits</b>	<b>\$232,000.32</b>	<b>\$228,866.25</b>	<b>\$19,710.22</b>	<b>\$480,576.79</b>
<b>300 Purchased Professional and Technical Services</b>				
330 Other Professional Services	9,300.00		16,240.00	25,540.00
360 Employee Training and Development Services	2,110.00	1,840.00	1,564.00	5,514.00
<b>Total Purchased Professional and Technical Services</b>	<b>\$11,410.00</b>	<b>\$1,840.00</b>	<b>\$17,804.00</b>	<b>\$31,054.00</b>
<b>500 Other Purchased Services</b>				
580 Travel	646.27			646.27
<b>Total Other Purchased Services</b>	<b>\$646.27</b>			<b>\$646.27</b>
<b>600 Supplies</b>				
610 General Supplies			31,191.22	31,191.22
640 Books and Periodicals	267.50		405.00	672.50
650 Supplies & Fees – Technology Related	5,307.77	5,307.76	19,825.00	30,440.53
<b>Total Supplies</b>	<b>\$5,575.27</b>	<b>\$5,307.76</b>	<b>\$51,421.22</b>	<b>\$62,304.25</b>
<b>Total 2270 Instructional Staff Professional Development Services</b>	<b>\$378,632.86</b>	<b>\$493,983.01</b>	<b>\$133,392.44</b>	<b>\$1,006,008.31</b>

LEA : 123467103     Souderton Area SD

Printed 11/9/2021 12:18:35 PM

General Fund (10)

2280 Nonpublic Support Services

	<u>Elementary</u>	<u>Secondary</u>	<u>Federal</u>	<u>Total</u>
600 <u>Supplies</u>				
610 General Supplies			723.00	723.00
<b>Total Supplies</b>			<b>\$723.00</b>	<b>\$723.00</b>
<b>Total 2280 Nonpublic Support Services</b>			<b>\$723.00</b>	<b>\$723.00</b>

LEA : 123467103     Souderton Area SD

Printed 11/9/2021 12:18:35 PM

General Fund (10)

2300 Support Services – Administration	Elementary	Secondary	Federal	Total
<b>100 <u>Personnel Services – Salaries</u></b>				
100 Personnel Services – Salaries	1,045,838.12	1,520,185.36		2,930,940.25
<b>Total Personnel Services – Salaries</b>	<b>\$1,045,838.12</b>	<b>\$1,520,185.36</b>		<b>\$2,930,940.25</b>
<b>200 <u>Personnel Services – Employee Benefits</u></b>				
210 Group Insurance – Contracted Provider	8,503.03	10,336.10		20,329.34
220 Social Security Contributions	79,453.74	109,870.98		212,116.19
230 PSERS Retirement Contributions	372,745.21	515,432.77		978,579.03
250 Unemployment Compensation	3,930.94	3,997.85		8,392.79
260 Workers' Compensation	3,510.07	2,590.27		6,925.81
270 Group Insurance – Self-Insurance	216,420.75	271,358.50		522,444.75
291 Other Retirement Plans	8,756.00	22,964.40		43,970.40
<b>Total Personnel Services – Employee Benefits</b>	<b>\$693,319.74</b>	<b>\$936,550.87</b>		<b>\$1,792,758.31</b>
<b>300 <u>Purchased Professional and Technical Services</u></b>				
330 Other Professional Services	195.00			298,090.25
<b>Total Purchased Professional and Technical Services</b>	<b>\$195.00</b>			<b>\$298,090.25</b>
<b>400 <u>Purchased Property Services</u></b>				
430 Repairs and Maintenance Services		251.76		251.76
440 Rentals	18,558.77	15,846.59		34,405.36
<b>Total Purchased Property Services</b>	<b>\$18,558.77</b>	<b>\$16,098.35</b>		<b>\$34,657.12</b>
<b>500 <u>Other Purchased Services</u></b>				
520 Insurance – General				82,265.60
530 Communications	1,646.47	6,361.01		40,858.50
549 Other Advertising/Public Relations				2,808.85
550 Printing and Binding	12,001.38	7,579.10		19,616.14
580 Travel	114.33	56.54		875.95
<b>Total Other Purchased Services</b>	<b>\$13,762.18</b>	<b>\$13,996.65</b>		<b>\$146,425.04</b>
<b>600 <u>Supplies</u></b>				
610 General Supplies	26,449.03	77,354.26		107,142.18
630 Food	53.55	1,034.20		3,683.74
640 Books and Periodicals		231.05		489.62
650 Supplies & Fees – Technology Related	109.00			13,684.00
<b>Total Supplies</b>	<b>\$26,611.58</b>	<b>\$78,619.51</b>		<b>\$124,999.54</b>
<b>800 <u>Other Objects</u></b>				
810 Dues and Fees	5,355.00	3,640.00		34,024.86
<b>Total Other Objects</b>	<b>\$5,355.00</b>	<b>\$3,640.00</b>		<b>\$34,024.86</b>
<b>Total 2300 Support Services – Administration</b>	<b>\$1,803,640.39</b>	<b>\$2,569,090.74</b>		<b>\$5,361,895.37</b>

LEA : 123467103     Souderton Area SD

Printed 11/9/2021 12:18:35 PM

General Fund (10)

2310 Board Services

Elementary                      Secondary                      Federal                      Total

300 <u>Purchased Professional and Technical Services</u>				
330 Other Professional Services				35,387.56
<b>Total Purchased Professional and Technical Services</b>				<b>\$35,387.56</b>
500 <u>Other Purchased Services</u>				
520 Insurance – General				70,625.60
549 Other Advertising/Public Relations				2,808.85
<b>Total Other Purchased Services</b>				<b>\$73,434.45</b>
600 <u>Supplies</u>				
610 General Supplies				598.97
650 Supplies & Fees – Technology Related				11,000.00
<b>Total Supplies</b>				<b>\$11,598.97</b>
800 <u>Other Objects</u>				
810 Dues and Fees				14,610.42
<b>Total Other Objects</b>				<b>\$14,610.42</b>
<b>Total 2310 Board Services</b>				<b>\$135,031.40</b>

LEA : 123467103      Souderton Area SD

Printed 11/9/2021 12:18:35 PM

General Fund (10)				
2330 Tax Assessment and Collection Services	<u>Elementary</u>	<u>Secondary</u>	<u>Federal</u>	<u>Total</u>
100 <u>Personnel Services – Salaries</u>				
100 Personnel Services – Salaries				91,029.00
Total Personnel Services – Salaries				\$91,029.00
200 <u>Personnel Services – Employee Benefits</u>				
220 Social Security Contributions				6,963.86
Total Personnel Services – Employee Benefits				\$6,963.86
300 <u>Purchased Professional and Technical Services</u>				
330 Other Professional Services				142,724.84
Total Purchased Professional and Technical Services				\$142,724.84
500 <u>Other Purchased Services</u>				
520 Insurance – General				11,640.00
530 Communications				24,284.73
Total Other Purchased Services				\$35,924.73
600 <u>Supplies</u>				
610 General Supplies				770.29
650 Supplies & Fees – Technology Related				75.00
Total Supplies				\$845.29
800 <u>Other Objects</u>				
810 Dues and Fees				2,478.00
Total Other Objects				\$2,478.00
Total 2330 Tax Assessment and Collection Services				\$279,965.72



LEA : 123467103     Souderton Area SD

Printed 11/9/2021 12:18:35 PM

General Fund (10)

2350 Legal and Accounting Services	<u>Elementary</u>	<u>Secondary</u>	<u>Federal</u>	<u>Total</u>
300 <u>Purchased Professional and Technical Services</u>				
330 Other Professional Services				119,657.85
Total Purchased Professional and Technical Services				\$119,657.85
Total 2350 Legal and Accounting Services				\$119,657.85

LEA : 123467103     Souderton Area SD

Printed 11/9/2021 12:18:35 PM

General Fund (10)

2360 Office of the Superintendent / Executive Director Services	Elementary	Secondary	Federal	Total
<b>100 <u>Personnel Services – Salaries</u></b>				
100 Personnel Services – Salaries				273,887.77
<b>Total Personnel Services – Salaries</b>				<b>\$273,887.77</b>
<b>200 <u>Personnel Services – Employee Benefits</u></b>				
210 Group Insurance – Contracted Provider				1,490.21
220 Social Security Contributions				15,827.61
230 PSERS Retirement Contributions				90,401.05
250 Unemployment Compensation				464.00
260 Workers' Compensation				825.47
270 Group Insurance – Self-Insurance				34,665.50
291 Other Retirement Plans				12,250.00
<b>Total Personnel Services – Employee Benefits</b>				<b>\$155,923.84</b>
<b>300 <u>Purchased Professional and Technical Services</u></b>				
330 Other Professional Services				125.00
<b>Total Purchased Professional and Technical Services</b>				<b>\$125.00</b>
<b>500 <u>Other Purchased Services</u></b>				
530 Communications	157.50	157.50		315.00
550 Printing and Binding				35.66
580 Travel				705.08
<b>Total Other Purchased Services</b>	<b>\$157.50</b>	<b>\$157.50</b>		<b>\$1,055.74</b>
<b>600 <u>Supplies</u></b>				
610 General Supplies				1,969.63
630 Food				2,595.99
640 Books and Periodicals				258.57
650 Supplies & Fees – Technology Related				2,500.00
<b>Total Supplies</b>				<b>\$7,324.19</b>
<b>800 <u>Other Objects</u></b>				
810 Dues and Fees				7,941.44
<b>Total Other Objects</b>				<b>\$7,941.44</b>
<b>Total 2360 Office of the Superintendent / Executive Director Services</b>	<b>\$157.50</b>	<b>\$157.50</b>		<b>\$446,257.98</b>

LEA : 123467103     Souderton Area SD

Printed 11/9/2021 12:18:35 PM

General Fund (10)

2370 Community Relations Services	<u>Elementary</u>	<u>Secondary</u>	<u>Federal</u>	<u>Total</u>
500 <u>Other Purchased Services</u>				
530 Communications				8,566.29
Total Other Purchased Services				\$8,566.29
Total 2370 Community Relations Services				\$8,566.29

LEA : 123467103      Souderton Area SD

Printed 11/9/2021 12:18:35 PM

General Fund (10)

2380 Office of the Principal Services	Elementary	Secondary	Federal	Total
100 <u>Personnel Services – Salaries</u>				
100 Personnel Services – Salaries	1,045,838.12	1,520,185.36		2,566,023.48
<b>Total Personnel Services – Salaries</b>	<b>\$1,045,838.12</b>	<b>\$1,520,185.36</b>		<b>\$2,566,023.48</b>
200 <u>Personnel Services – Employee Benefits</u>				
210 Group Insurance – Contracted Provider	8,503.03	10,336.10		18,839.13
220 Social Security Contributions	79,453.74	109,870.98		189,324.72
230 PSERS Retirement Contributions	372,745.21	515,432.77		888,177.98
250 Unemployment Compensation	3,930.94	3,997.85		7,928.79
260 Workers' Compensation	3,510.07	2,590.27		6,100.34
270 Group Insurance – Self-Insurance	216,420.75	271,358.50		487,779.25
291 Other Retirement Plans	8,756.00	22,964.40		31,720.40
<b>Total Personnel Services – Employee Benefits</b>	<b>\$693,319.74</b>	<b>\$936,550.87</b>		<b>\$1,629,870.61</b>
300 <u>Purchased Professional and Technical Services</u>				
330 Other Professional Services	195.00			195.00
<b>Total Purchased Professional and Technical Services</b>	<b>\$195.00</b>			<b>\$195.00</b>
400 <u>Purchased Property Services</u>				
430 Repairs and Maintenance Services		251.76		251.76
440 Rentals	18,558.77	15,846.59		34,405.36
<b>Total Purchased Property Services</b>	<b>\$18,558.77</b>	<b>\$16,098.35</b>		<b>\$34,657.12</b>
500 <u>Other Purchased Services</u>				
530 Communications	1,488.97	6,203.51		7,692.48
550 Printing and Binding	12,001.38	7,579.10		19,580.48
580 Travel	114.33	56.54		170.87
<b>Total Other Purchased Services</b>	<b>\$13,604.68</b>	<b>\$13,839.15</b>		<b>\$27,443.83</b>
600 <u>Supplies</u>				
610 General Supplies	26,449.03	77,354.26		103,803.29
630 Food	53.55	1,034.20		1,087.75
640 Books and Periodicals		231.05		231.05
650 Supplies & Fees – Technology Related	109.00			109.00
<b>Total Supplies</b>	<b>\$26,611.58</b>	<b>\$78,619.51</b>		<b>\$105,231.09</b>
800 <u>Other Objects</u>				
810 Dues and Fees	5,355.00	3,640.00		8,995.00
<b>Total Other Objects</b>	<b>\$5,355.00</b>	<b>\$3,640.00</b>		<b>\$8,995.00</b>
<b>Total 2380 Office of the Principal Services</b>	<b>\$1,803,482.89</b>	<b>\$2,568,933.24</b>		<b>\$4,372,416.13</b>

LEA : 123467103     Souderton Area SD

Printed 11/9/2021 12:18:35 PM

General Fund (10)

2400 Support Services – Pupil Health	Elementary	Secondary	Federal	Total
100 <u>Personnel Services – Salaries</u>				
100 Personnel Services – Salaries				723,106.05
Total Personnel Services – Salaries				\$723,106.05
200 <u>Personnel Services – Employee Benefits</u>				
210 Group Insurance – Contracted Provider				22.20
220 Social Security Contributions				53,515.20
230 PSERS Retirement Contributions				243,408.85
250 Unemployment Compensation				173.12
260 Workers' Compensation				3,904.64
270 Group Insurance – Self-Insurance				141,800.00
Total Personnel Services – Employee Benefits				\$442,824.01
300 <u>Purchased Professional and Technical Services</u>				
322 Professional Educational Services – Ius				366.42
330 Other Professional Services				246,193.49
Total Purchased Professional and Technical Services				\$246,559.91
400 <u>Purchased Property Services</u>				
410 Cleaning Services				258.00
430 Repairs and Maintenance Services				655.00
Total Purchased Property Services				\$913.00
500 <u>Other Purchased Services</u>				
580 Travel				196.61
Total Other Purchased Services				\$196.61
600 <u>Supplies</u>				
610 General Supplies			9,292.48	37,919.30
640 Books and Periodicals				394.00
650 Supplies & Fees – Technology Related				4,500.00
Total Supplies			\$9,292.48	\$42,813.30
Total 2400 Support Services – Pupil Health			\$9,292.48	\$1,456,412.88

LEA : 123467103     Souderton Area SD

Printed 11/9/2021 12:18:35 PM

General Fund (10)

2420 Medical Services

Elementary                      Secondary                      Federal                      Total

300 Purchased Professional and Technical Services

322 Professional Educational Services – lus 366.42

330 Other Professional Services 243,250.49

<b>Total Purchased Professional and Technical Services</b>				<b>\$243,616.91</b>
<b>Total 2420 Medical Services</b>				<b>\$243,616.91</b>

LEA : 123467103      Souderton Area SD

Printed 11/9/2021 12:18:35 PM

General Fund (10)				
2440 Nursing Services				
	<u>Elementary</u>	<u>Secondary</u>	<u>Federal</u>	<u>Total</u>
100 <u>Personnel Services – Salaries</u>				
100 Personnel Services – Salaries				721,282.39
Total Personnel Services – Salaries				\$721,282.39
200 <u>Personnel Services – Employee Benefits</u>				
210 Group Insurance – Contracted Provider				22.08
220 Social Security Contributions				53,386.35
230 PSERS Retirement Contributions				242,779.44
250 Unemployment Compensation				172.80
260 Workers' Compensation				3,894.77
270 Group Insurance – Self-Insurance				140,066.75
Total Personnel Services – Employee Benefits				\$440,322.19
300 <u>Purchased Professional and Technical Services</u>				
330 Other Professional Services				2,943.00
Total Purchased Professional and Technical Services				\$2,943.00
400 <u>Purchased Property Services</u>				
410 Cleaning Services				258.00
430 Repairs and Maintenance Services				655.00
Total Purchased Property Services				\$913.00
500 <u>Other Purchased Services</u>				
580 Travel				196.61
Total Other Purchased Services				\$196.61
600 <u>Supplies</u>				
610 General Supplies			9,292.48	37,919.30
640 Books and Periodicals				394.00
650 Supplies & Fees – Technology Related				4,500.00
Total Supplies			\$9,292.48	\$42,813.30
Total 2440 Nursing Services			\$9,292.48	\$1,208,470.49

LEA : 123467103     Souderton Area SD

Printed 11/9/2021 12:18:35 PM

General Fund (10)

2450 Nonpublic Health Services	<u>Elementary</u>	<u>Secondary</u>	<u>Federal</u>	<u>Total</u>
100 <u>Personnel Services – Salaries</u>				
100 Personnel Services – Salaries				1,823.66
Total Personnel Services – Salaries				\$1,823.66
200 <u>Personnel Services – Employee Benefits</u>				
210 Group Insurance – Contracted Provider				0.12
220 Social Security Contributions				128.85
230 PSERS Retirement Contributions				629.41
250 Unemployment Compensation				0.32
260 Workers' Compensation				9.87
270 Group Insurance – Self-Insurance				1,733.25
Total Personnel Services – Employee Benefits				\$2,501.82
Total 2450 Nonpublic Health Services				\$4,325.48



LEA : 123467103     Souderton Area SD

Printed 11/9/2021 12:18:35 PM

General Fund (10)

2500 Support Services – Business	Elementary	Secondary	Federal	Total
100 <u>Personnel Services – Salaries</u>				
100 Personnel Services – Salaries				506,139.16
Total Personnel Services – Salaries				\$506,139.16
200 <u>Personnel Services – Employee Benefits</u>				
210 Group Insurance – Contracted Provider				2,497.62
220 Social Security Contributions				36,163.89
230 PSERS Retirement Contributions				171,552.74
250 Unemployment Compensation				930.41
260 Workers' Compensation				1,470.59
270 Group Insurance – Self-Insurance				115,444.00
280 Other Post-Employment Benefits (OPEB)				1,500.00
291 Other Retirement Plans				7,237.37
Total Personnel Services – Employee Benefits				\$336,796.62
300 <u>Purchased Professional and Technical Services</u>				
330 Other Professional Services				19,345.70
Total Purchased Professional and Technical Services				\$19,345.70
400 <u>Purchased Property Services</u>				
410 Cleaning Services				756.00
430 Repairs and Maintenance Services				976.00
440 Rentals				49,915.62
Total Purchased Property Services				\$51,647.62
500 <u>Other Purchased Services</u>				
530 Communications				11,159.48
549 Other Advertising/Public Relations				387.94
580 Travel				334.86
Total Other Purchased Services				\$11,882.28
600 <u>Supplies</u>				
610 General Supplies				21,980.36
630 Food				23,754.81
650 Supplies & Fees – Technology Related				18,879.22
Total Supplies				\$64,614.39
800 <u>Other Objects</u>				
810 Dues and Fees				24,431.83
Total Other Objects				\$24,431.83
Total 2500 Support Services – Business				\$1,014,857.60

LEA : 123467103     Souderton Area SD

Printed 11/9/2021 12:18:35 PM

General Fund (10)

2510 Fiscal Services

	<u>Elementary</u>	<u>Secondary</u>	<u>Federal</u>	<u>Total</u>
<b>100 <u>Personnel Services – Salaries</u></b>				
100 Personnel Services – Salaries				405,650.19
<b>Total Personnel Services – Salaries</b>				<b>\$405,650.19</b>
<b>200 <u>Personnel Services – Employee Benefits</u></b>				
210 Group Insurance – Contracted Provider				2,274.06
220 Social Security Contributions				28,785.90
230 PSERS Retirement Contributions				136,875.04
250 Unemployment Compensation				722.12
260 Workers' Compensation				1,189.98
270 Group Insurance – Self-Insurance				81,029.75
280 Other Post-Employment Benefits (OPEB)				1,500.00
291 Other Retirement Plans				7,237.37
<b>Total Personnel Services – Employee Benefits</b>				<b>\$259,614.22</b>
<b>300 <u>Purchased Professional and Technical Services</u></b>				
330 Other Professional Services				19,345.70
<b>Total Purchased Professional and Technical Services</b>				<b>\$19,345.70</b>
<b>400 <u>Purchased Property Services</u></b>				
410 Cleaning Services				756.00
440 Rentals				49,915.62
<b>Total Purchased Property Services</b>				<b>\$50,671.62</b>
<b>500 <u>Other Purchased Services</u></b>				
530 Communications				11,159.48
549 Other Advertising/Public Relations				387.94
580 Travel				334.86
<b>Total Other Purchased Services</b>				<b>\$11,882.28</b>
<b>600 <u>Supplies</u></b>				
610 General Supplies				19,775.60
630 Food				23,754.81
650 Supplies & Fees – Technology Related				18,879.22
<b>Total Supplies</b>				<b>\$62,409.63</b>
<b>800 <u>Other Objects</u></b>				
810 Dues and Fees				24,431.83
<b>Total Other Objects</b>				<b>\$24,431.83</b>
<b>Total 2510 Fiscal Services</b>				<b>\$834,005.47</b>

LEA : 123467103     Souderton Area SD

Printed 11/9/2021 12:18:35 PM

General Fund (10)				
2511 Supervision of Fiscal Services - Head of Component	<u>Elementary</u>	<u>Secondary</u>	<u>Federal</u>	<u>Total</u>
100 <u>Personnel Services – Salaries</u>				
100 Personnel Services – Salaries				221,766.93
Total Personnel Services – Salaries				\$221,766.93
200 <u>Personnel Services – Employee Benefits</u>				
210 Group Insurance – Contracted Provider				1,375.72
220 Social Security Contributions				14,811.50
230 PSERS Retirement Contributions				74,360.01
250 Unemployment Compensation				385.97
260 Workers' Compensation				658.58
270 Group Insurance – Self-Insurance				32,208.75
291 Other Retirement Plans				3,446.37
Total Personnel Services – Employee Benefits				\$127,246.90
300 <u>Purchased Professional and Technical Services</u>				
330 Other Professional Services				19,345.70
Total Purchased Professional and Technical Services				\$19,345.70
400 <u>Purchased Property Services</u>				
410 Cleaning Services				756.00
440 Rentals				49,915.62
Total Purchased Property Services				\$50,671.62
500 <u>Other Purchased Services</u>				
530 Communications				11,159.48
549 Other Advertising/Public Relations				387.94
580 Travel				334.86
Total Other Purchased Services				\$11,882.28
600 <u>Supplies</u>				
610 General Supplies				19,775.60
630 Food				23,754.81
650 Supplies & Fees – Technology Related				18,879.22
Total Supplies				\$62,409.63
800 <u>Other Objects</u>				
810 Dues and Fees				2,840.83
Total Other Objects				\$2,840.83
Total 2511 Supervision of Fiscal Services - Head of Component				\$496,163.89

LEA : 123467103     Souderton Area SD

Printed 11/9/2021 12:18:35 PM

General Fund (10)

2513 Receiving and Disbursing Funds Services	<u>Elementary</u>	<u>Secondary</u>	<u>Federal</u>	<u>Total</u>
100 <u>Personnel Services – Salaries</u>				
100 Personnel Services – Salaries				21,928.78
Total Personnel Services – Salaries				\$21,928.78
200 <u>Personnel Services – Employee Benefits</u>				
210 Group Insurance – Contracted Provider				48.60
220 Social Security Contributions				1,546.87
230 PSERS Retirement Contributions				7,567.66
250 Unemployment Compensation				43.83
260 Workers' Compensation				61.08
270 Group Insurance – Self-Insurance				7,211.50
Total Personnel Services – Employee Benefits				\$16,479.54
Total 2513 Receiving and Disbursing Funds Services				\$38,408.32

LEA : 123467103     Souderton Area SD

Printed 11/9/2021 12:18:35 PM

General Fund (10)

2514 Payroll Services

	<u>Elementary</u>	<u>Secondary</u>	<u>Federal</u>	<u>Total</u>
<b>100 <u>Personnel Services – Salaries</u></b>				
100 Personnel Services – Salaries				57,308.18
<b>Total Personnel Services – Salaries</b>				<b>\$57,308.18</b>
<b>200 <u>Personnel Services – Employee Benefits</u></b>				
210 Group Insurance – Contracted Provider				126.35
220 Social Security Contributions				4,388.32
230 PSERS Retirement Contributions				19,777.16
250 Unemployment Compensation				111.04
260 Workers' Compensation				157.39
270 Group Insurance – Self-Insurance				21,267.25
280 Other Post-Employment Benefits (OPEB)				1,500.00
<b>Total Personnel Services – Employee Benefits</b>				<b>\$47,327.51</b>
<b>Total 2514 Payroll Services</b>				<b>\$104,635.69</b>

LEA : 123467103     Souderton Area SD

Printed 11/9/2021 12:18:35 PM

General Fund (10)

2515 Financial Accounting Services	<u>Elementary</u>	<u>Secondary</u>	<u>Federal</u>	<u>Total</u>
100 <u>Personnel Services – Salaries</u>				
100 Personnel Services – Salaries				104,646.30
Total Personnel Services – Salaries				\$104,646.30
200 <u>Personnel Services – Employee Benefits</u>				
210 Group Insurance – Contracted Provider				723.39
220 Social Security Contributions				8,039.21
230 PSERS Retirement Contributions				35,170.21
250 Unemployment Compensation				181.28
260 Workers' Compensation				312.93
270 Group Insurance – Self-Insurance				20,342.25
291 Other Retirement Plans				3,791.00
Total Personnel Services – Employee Benefits				\$68,560.27
Total 2515 Financial Accounting Services				\$173,206.57

LEA : 123467103     Souderton Area SD

Printed 11/9/2021 12:18:35 PM

General Fund (10)

2519 Other Fiscal Services

Elementary

Secondary

Federal

Total

800 Other Objects

810 Dues and Fees

21,591.00

Total Other Objects				\$21,591.00
Total 2519 Other Fiscal Services				\$21,591.00

LEA : 123467103     Souderton Area SD

Printed 11/9/2021 12:18:35 PM

General Fund (10)

2520 Purchasing Services

Elementary                      Secondary                      Federal                      Total

100 <u>Personnel Services – Salaries</u>				
100 Personnel Services – Salaries				45,825.76
<b>Total Personnel Services – Salaries</b>				<b>\$45,825.76</b>
200 <u>Personnel Services – Employee Benefits</u>				
210 Group Insurance – Contracted Provider				106.92
220 Social Security Contributions				3,299.41
230 PSERS Retirement Contributions				15,814.43
250 Unemployment Compensation				95.44
260 Workers' Compensation				121.37
270 Group Insurance – Self-Insurance				17,012.75
<b>Total Personnel Services – Employee Benefits</b>				<b>\$36,450.32</b>
<b>Total 2520 Purchasing Services</b>				<b>\$82,276.08</b>



LEA : 123467103     Souderton Area SD

Printed 11/9/2021 12:18:35 PM

General Fund (10)

2540 Printing, Publishing and Duplicating Services

Elementary                      Secondary                      Federal                      Total

100 <u>Personnel Services – Salaries</u>				
100 Personnel Services – Salaries				54,663.21
<b>Total Personnel Services – Salaries</b>				<b>\$54,663.21</b>
200 <u>Personnel Services – Employee Benefits</u>				
210 Group Insurance – Contracted Provider				116.64
220 Social Security Contributions				4,078.58
230 PSERS Retirement Contributions				18,863.27
250 Unemployment Compensation				112.85
260 Workers' Compensation				159.24
270 Group Insurance – Self-Insurance				17,401.50
<b>Total Personnel Services – Employee Benefits</b>				<b>\$40,732.08</b>
400 <u>Purchased Property Services</u>				
430 Repairs and Maintenance Services				976.00
<b>Total Purchased Property Services</b>				<b>\$976.00</b>
600 <u>Supplies</u>				
610 General Supplies				2,204.76
<b>Total Supplies</b>				<b>\$2,204.76</b>
<b>Total 2540 Printing, Publishing and Duplicating Services</b>				<b>\$98,576.05</b>

LEA : 123467103      Souderton Area SD

Printed 11/9/2021 12:18:35 PM

General Fund (10)

2600 Operation and Maintenance of Plant Services

Elementary                      Secondary                      Federal                      Total

<b>100 <u>Personnel Services – Salaries</u></b>				
100 Personnel Services – Salaries				3,859,464.82
<b>Total Personnel Services – Salaries</b>				<b>\$3,859,464.82</b>
<b>200 <u>Personnel Services – Employee Benefits</u></b>				
210 Group Insurance – Contracted Provider				12,297.42
220 Social Security Contributions				281,901.51
230 PSERS Retirement Contributions				1,287,479.35
250 Unemployment Compensation				10,279.51
260 Workers' Compensation				15,404.98
270 Group Insurance – Self-Insurance				919,156.50
291 Other Retirement Plans				5,114.34
<b>Total Personnel Services – Employee Benefits</b>				<b>\$2,531,633.61</b>
<b>300 <u>Purchased Professional and Technical Services</u></b>				
330 Other Professional Services				20,163.56
350 Security / Safety Services				102,454.52
<b>Total Purchased Professional and Technical Services</b>				<b>\$122,618.08</b>
<b>400 <u>Purchased Property Services</u></b>				
410 Cleaning Services				278,247.98
420 Utility Services				137,599.79
430 Repairs and Maintenance Services			995.00	548,332.46
440 Rentals				6,055.54
460 Extermination Services				5,232.60
<b>Total Purchased Property Services</b>			<b>\$995.00</b>	<b>\$975,468.37</b>
<b>500 <u>Other Purchased Services</u></b>				
522 Automotive Liability Insurance				19,918.00
523 General Property and Liability Insurance				259,120.00
530 Communications				160,270.20
580 Travel				472.28
<b>Total Other Purchased Services</b>				<b>\$439,780.48</b>
<b>600 <u>Supplies</u></b>				
610 General Supplies	417,338.83	421,341.68	82,063.00	920,743.51
620 Energy				1,257,858.63
650 Supplies & Fees – Technology Related				4,815.00
<b>Total Supplies</b>	<b>\$417,338.83</b>	<b>\$421,341.68</b>	<b>\$82,063.00</b>	<b>\$2,183,417.14</b>
<b>700 <u>Property</u></b>				
752 Capital Equipment – Original and Additional				40,568.00
762 Capitalized Equipment - Replacement				83,145.20
<b>Total Property</b>				<b>\$123,713.20</b>
<b>800 <u>Other Objects</u></b>				
810 Dues and Fees				5,504.27
<b>Total Other Objects</b>				<b>\$5,504.27</b>
<b>Total 2600 Operation and Maintenance of Plant Services</b>	<b>\$417,338.83</b>	<b>\$421,341.68</b>	<b>\$83,058.00</b>	<b>\$10,241,599.97</b>

LEA : 123467103     Souderton Area SD

Printed 11/9/2021 12:18:35 PM

General Fund (10)

2610 Supervision of Operation and Maintenance of Plant Services	<u>Elementary</u>	<u>Secondary</u>	<u>Federal</u>	<u>Total</u>
100 <u>Personnel Services – Salaries</u>				
100 Personnel Services – Salaries				186,941.75
Total Personnel Services – Salaries				\$186,941.75
200 <u>Personnel Services – Employee Benefits</u>				
210 Group Insurance – Contracted Provider				847.36
220 Social Security Contributions				13,735.17
230 PSERS Retirement Contributions				63,466.62
250 Unemployment Compensation				250.30
260 Workers' Compensation				677.02
270 Group Insurance – Self-Insurance				57,393.00
291 Other Retirement Plans				3,800.00
Total Personnel Services – Employee Benefits				\$140,169.47
300 <u>Purchased Professional and Technical Services</u>				
330 Other Professional Services				20,163.56
Total Purchased Professional and Technical Services				\$20,163.56
500 <u>Other Purchased Services</u>				
580 Travel				472.28
Total Other Purchased Services				\$472.28
800 <u>Other Objects</u>				
810 Dues and Fees				715.00
Total Other Objects				\$715.00
Total 2610 Supervision of Operation and Maintenance of Plant Services				\$348,462.06

LEA : 123467103      Souderton Area SD

Printed 11/9/2021 12:18:35 PM

General Fund (10)

2611 Supervision of Operation and Maintenance of Plant Services – Head of Component	<u>Elementary</u>	<u>Secondary</u>	<u>Federal</u>	<u>Total</u>
<b>100 <u>Personnel Services – Salaries</u></b>				
100 Personnel Services – Salaries				186,941.75
<b>Total Personnel Services – Salaries</b>				<b>\$186,941.75</b>
<b>200 <u>Personnel Services – Employee Benefits</u></b>				
210 Group Insurance – Contracted Provider				847.36
220 Social Security Contributions				13,735.17
230 PSERS Retirement Contributions				63,466.62
250 Unemployment Compensation				250.30
260 Workers' Compensation				677.02
270 Group Insurance – Self-Insurance				57,393.00
291 Other Retirement Plans				3,800.00
<b>Total Personnel Services – Employee Benefits</b>				<b>\$140,169.47</b>
<b>300 <u>Purchased Professional and Technical Services</u></b>				
330 Other Professional Services				20,163.56
<b>Total Purchased Professional and Technical Services</b>				<b>\$20,163.56</b>
<b>500 <u>Other Purchased Services</u></b>				
580 Travel				472.28
<b>Total Other Purchased Services</b>				<b>\$472.28</b>
<b>800 <u>Other Objects</u></b>				
810 Dues and Fees				715.00
<b>Total Other Objects</b>				<b>\$715.00</b>
<b>Total 2611 Supervision of Operation and Maintenance of Plant Services – Head of Component</b>				<b>\$348,462.06</b>

LEA : 123467103     Souderton Area SD

Printed 11/9/2021 12:18:35 PM

General Fund (10)

2620 Operation of Buildings Services	Elementary	Secondary	Federal	Total
100 <u>Personnel Services – Salaries</u>				
100 Personnel Services – Salaries				3,253,526.63
Total Personnel Services – Salaries				\$3,253,526.63
200 <u>Personnel Services – Employee Benefits</u>				
210 Group Insurance – Contracted Provider				11,168.18
220 Social Security Contributions				237,027.76
230 PSERS Retirement Contributions				1,080,569.90
250 Unemployment Compensation				9,702.61
260 Workers' Compensation				12,838.71
270 Group Insurance – Self-Insurance				812,551.50
Total Personnel Services – Employee Benefits				\$2,163,858.66
400 <u>Purchased Property Services</u>				
430 Repairs and Maintenance Services			995.00	468,617.78
440 Rentals				6,055.54
Total Purchased Property Services			\$995.00	\$474,673.32
600 <u>Supplies</u>				
610 General Supplies	261,227.65	268,225.94	82,063.00	611,516.59
Total Supplies	\$261,227.65	\$268,225.94	\$82,063.00	\$611,516.59
Total 2620 Operation of Buildings Services	\$261,227.65	\$268,225.94	\$83,058.00	\$6,503,575.20

LEA : 123467103     Souderton Area SD

Printed 11/9/2021 12:18:35 PM

General Fund (10)

2630 Care and Upkeep of Grounds Services	<u>Elementary</u>	<u>Secondary</u>	<u>Federal</u>	<u>Total</u>
100 <u>Personnel Services – Salaries</u>				
100 Personnel Services – Salaries				112,150.03
Total Personnel Services – Salaries				\$112,150.03
200 <u>Personnel Services – Employee Benefits</u>				
210 Group Insurance – Contracted Provider				281.88
220 Social Security Contributions				8,208.05
230 PSERS Retirement Contributions				38,696.61
250 Unemployment Compensation				245.51
260 Workers' Compensation				251.15
270 Group Insurance – Self-Insurance				30,015.75
Total Personnel Services – Employee Benefits				\$77,698.95
400 <u>Purchased Property Services</u>				
410 Cleaning Services				219,285.00
430 Repairs and Maintenance Services				28,735.12
Total Purchased Property Services				\$248,020.12
600 <u>Supplies</u>				
610 General Supplies	5,569.40	2,953.15		8,522.55
Total Supplies	\$5,569.40	\$2,953.15		\$8,522.55
Total 2630 Care and Upkeep of Grounds Services	\$5,569.40	\$2,953.15		\$446,391.65

LEA : 123467103     Souderton Area SD

Printed 11/9/2021 12:18:35 PM

General Fund (10)				
2650 Vehicle Operation and Maintenance Services (Other Than Student Transportation Vehicles)	<u>Elementary</u>	<u>Secondary</u>	<u>Federal</u>	<u>Total</u>
400 <u>Purchased Property Services</u>				
430 Repairs and Maintenance Services				14,760.98
Total Purchased Property Services				\$14,760.98
500 <u>Other Purchased Services</u>				
522 Automotive Liability Insurance				19,918.00
Total Other Purchased Services				\$19,918.00
600 <u>Supplies</u>				
610 General Supplies	3,241.67	2,862.48		6,104.15
620 Energy				4,980.15
Total Supplies	\$3,241.67	\$2,862.48		\$11,084.30
700 <u>Property</u>				
762 Capitalized Equipment - Replacement				83,145.20
Total Property				\$83,145.20
Total 2650 Vehicle Operation and Maintenance Services (Other Than Student Transportation Vehicles)	\$3,241.67	\$2,862.48		\$128,908.48

LEA : 123467103      Souderton Area SD

Printed 11/9/2021 12:18:35 PM

General Fund (10)				
2660 Safety and Security Services	<u>Elementary</u>	<u>Secondary</u>	<u>Federal</u>	<u>Total</u>
100 <u>Personnel Services – Salaries</u>				
100 Personnel Services – Salaries				306,846.41
Total Personnel Services – Salaries				\$306,846.41
200 <u>Personnel Services – Employee Benefits</u>				
220 Social Security Contributions				22,930.53
230 PSERS Retirement Contributions				104,746.22
250 Unemployment Compensation				81.09
260 Workers' Compensation				1,638.10
270 Group Insurance – Self-Insurance				19,196.25
291 Other Retirement Plans				1,314.34
Total Personnel Services – Employee Benefits				\$149,906.53
300 <u>Purchased Professional and Technical Services</u>				
350 Security / Safety Services				102,454.52
Total Purchased Professional and Technical Services				\$102,454.52
400 <u>Purchased Property Services</u>				
430 Repairs and Maintenance Services				36,218.58
Total Purchased Property Services				\$36,218.58
600 <u>Supplies</u>				
610 General Supplies	147,300.11	147,300.11		294,600.22
650 Supplies & Fees – Technology Related				4,815.00
Total Supplies	\$147,300.11	\$147,300.11		\$299,415.22
700 <u>Property</u>				
752 Capital Equipment – Original and Additional				40,568.00
Total Property				\$40,568.00
800 <u>Other Objects</u>				
810 Dues and Fees				40.00
Total Other Objects				\$40.00
Total 2660 Safety and Security Services	\$147,300.11	\$147,300.11		\$935,449.26



LEA : 123467103     Souderton Area SD

Printed 11/9/2021 12:18:35 PM

General Fund (10)

2690 Other Operation and Maintenance of Plant Services	<u>Elementary</u>	<u>Secondary</u>	<u>Federal</u>	<u>Total</u>
400 <u>Purchased Property Services</u>				
410 Cleaning Services				58,962.98
420 Utility Services				137,599.79
460 Extermination Services				5,232.60
Total Purchased Property Services				\$201,795.37
500 <u>Other Purchased Services</u>				
523 General Property and Liability Insurance				259,120.00
530 Communications				160,270.20
Total Other Purchased Services				\$419,390.20
600 <u>Supplies</u>				
620 Energy				1,252,878.48
Total Supplies				\$1,252,878.48
800 <u>Other Objects</u>				
810 Dues and Fees				4,749.27
Total Other Objects				\$4,749.27
Total 2690 Other Operation and Maintenance of Plant Services				\$1,878,813.32

LEA : 123467103     Souderton Area SD

Printed 11/9/2021 12:18:35 PM

General Fund (10)

2700 Student Transportation Services	<u>Elementary</u>	<u>Secondary</u>	<u>Federal</u>	<u>Total</u>
500 <u>Other Purchased Services</u>				
511 Student Transportation Services from Another LEA Within the State				6,947.50
513 Contracted Carriers				6,968,731.40
516 Student Transportation Services From the IU				233,389.31
519 Student Transportation Services From Other Sources				12,564.00
Total Other Purchased Services				\$7,221,632.21
600 <u>Supplies</u>				
650 Supplies & Fees – Technology Related				13,845.00
Total Supplies				\$13,845.00
Total 2700 Student Transportation Services				\$7,235,477.21

LEA : 123467103     Souderton Area SD

Printed 11/9/2021 12:18:35 PM

General Fund (10)

2720 Vehicle Operation Services	<u>Elementary</u>	<u>Secondary</u>	<u>Federal</u>	<u>Total</u>
500 <u>Other Purchased Services</u>				
513 Contracted Carriers				5,900,594.27
516 Student Transportation Services From the IU				233,389.31
519 Student Transportation Services From Other Sources				12,564.00
Total Other Purchased Services				\$6,146,547.58
600 <u>Supplies</u>				
650 Supplies & Fees – Technology Related				13,845.00
Total Supplies				\$13,845.00
Total 2720 Vehicle Operation Services				\$6,160,392.58

LEA : 123467103     Souderton Area SD

Printed 11/9/2021 12:18:35 PM

General Fund (10)

2750 Nonpublic Transportation

Elementary                      Secondary                      Federal                      Total

500 Other Purchased Services

511 Student Transportation Services from Another LEA Within the State 6,947.50

513 Contracted Carriers 1,068,137.13

**Total Other Purchased Services \$1,075,084.63**

**Total 2750 Nonpublic Transportation \$1,075,084.63**

LEA : 123467103      Souderton Area SD

Printed 11/9/2021 12:18:35 PM

General Fund (10)

2800 Support Services – Central

	<u>Elementary</u>	<u>Secondary</u>	<u>Federal</u>	<u>Total</u>
<b>100 <u>Personnel Services – Salaries</u></b>				
100 Personnel Services – Salaries				800,518.10
<b>Total Personnel Services – Salaries</b>				<b>\$800,518.10</b>
<b>200 <u>Personnel Services – Employee Benefits</u></b>				
210 Group Insurance – Contracted Provider				5,436.31
220 Social Security Contributions				56,584.44
230 PSERS Retirement Contributions				266,459.38
240 Tuition Reimbursement				16,405.00
250 Unemployment Compensation				1,999.30
260 Workers' Compensation				3,193.01
270 Group Insurance – Self-Insurance				156,540.75
291 Other Retirement Plans				21,711.64
<b>Total Personnel Services – Employee Benefits</b>				<b>\$528,329.83</b>
<b>300 <u>Purchased Professional and Technical Services</u></b>				
329 Professional Educational Services – Other				4,513.75
330 Other Professional Services				112,998.21
340 Technical Services				43,598.40
360 Employee Training and Development Services				4,926.00
<b>Total Purchased Professional and Technical Services</b>				<b>\$166,036.36</b>
<b>400 <u>Purchased Property Services</u></b>				
430 Repairs and Maintenance Services				18,781.02
<b>Total Purchased Property Services</b>				<b>\$18,781.02</b>
<b>500 <u>Other Purchased Services</u></b>				
530 Communications				448,735.26
550 Printing and Binding				61.65
580 Travel				116.73
<b>Total Other Purchased Services</b>				<b>\$448,913.64</b>
<b>600 <u>Supplies</u></b>				
610 General Supplies			1,295,225.00	1,567,909.22
640 Books and Periodicals				440.00
650 Supplies & Fees – Technology Related				764,946.27
<b>Total Supplies</b>			<b>\$1,295,225.00</b>	<b>\$2,333,295.49</b>
<b>700 <u>Property</u></b>				
758 Capitalized Technology Software - Original				88,200.00
766 Capitalized Technology Equipment – Replacement				100,387.23
768 Capitalized Technology Software - Replacement				6,892.21
<b>Total Property</b>				<b>\$195,479.44</b>
<b>800 <u>Other Objects</u></b>				
810 Dues and Fees				2,014.00
<b>Total Other Objects</b>				<b>\$2,014.00</b>
<b>Total 2800 Support Services – Central</b>			<b>\$1,295,225.00</b>	<b>\$4,493,367.88</b>

LEA : 123467103     Souderton Area SD

Printed 11/9/2021 12:18:35 PM

General Fund (10)

2820 Information Services

	<u>Elementary</u>	<u>Secondary</u>	<u>Federal</u>	<u>Total</u>
<b>100 <u>Personnel Services – Salaries</u></b>				
100 Personnel Services – Salaries				84,413.84
<b>Total Personnel Services – Salaries</b>				<b>\$84,413.84</b>
<b>200 <u>Personnel Services – Employee Benefits</u></b>				
210 Group Insurance – Contracted Provider				2,040.40
220 Social Security Contributions				6,175.67
230 PSERS Retirement Contributions				28,370.21
250 Unemployment Compensation				1,133.32
260 Workers' Compensation				455.73
270 Group Insurance – Self-Insurance				16,698.50
291 Other Retirement Plans				3,750.00
<b>Total Personnel Services – Employee Benefits</b>				<b>\$58,623.83</b>
<b>300 <u>Purchased Professional and Technical Services</u></b>				
330 Other Professional Services				63,514.00
<b>Total Purchased Professional and Technical Services</b>				<b>\$63,514.00</b>
<b>Total 2820 Information Services</b>				<b>\$206,551.67</b>

LEA : 123467103     Souderton Area SD

Printed 11/9/2021 12:18:35 PM

General Fund (10)

2821 Supervision of Information Services	<u>Elementary</u>	<u>Secondary</u>	<u>Federal</u>	<u>Total</u>
100 <u>Personnel Services – Salaries</u>				
100 Personnel Services – Salaries				84,413.84
Total Personnel Services – Salaries				\$84,413.84
200 <u>Personnel Services – Employee Benefits</u>				
210 Group Insurance – Contracted Provider				2,040.40
220 Social Security Contributions				6,175.67
230 PSERS Retirement Contributions				28,370.21
250 Unemployment Compensation				1,133.32
260 Workers' Compensation				455.73
270 Group Insurance – Self-Insurance				16,698.50
291 Other Retirement Plans				3,750.00
Total Personnel Services – Employee Benefits				\$58,623.83
300 <u>Purchased Professional and Technical Services</u>				
330 Other Professional Services				63,514.00
Total Purchased Professional and Technical Services				\$63,514.00
Total 2821 Supervision of Information Services				\$206,551.67

LEA : 123467103     Souderton Area SD

Printed 11/9/2021 12:18:35 PM

General Fund (10)

2830 Staff Services

	<u>Elementary</u>	<u>Secondary</u>	<u>Federal</u>	<u>Total</u>
<b>100 <u>Personnel Services – Salaries</u></b>				
100 Personnel Services – Salaries				370,191.56
<b>Total Personnel Services – Salaries</b>				<b>\$370,191.56</b>
<b>200 <u>Personnel Services – Employee Benefits</u></b>				
210 Group Insurance – Contracted Provider				1,272.35
220 Social Security Contributions				24,871.53
230 PSERS Retirement Contributions				121,453.24
240 Tuition Reimbursement				16,405.00
250 Unemployment Compensation				531.05
260 Workers' Compensation				1,305.02
270 Group Insurance – Self-Insurance				74,665.50
291 Other Retirement Plans				10,450.00
<b>Total Personnel Services – Employee Benefits</b>				<b>\$250,953.69</b>
<b>300 <u>Purchased Professional and Technical Services</u></b>				
329 Professional Educational Services – Other				4,513.75
360 Employee Training and Development Services				4,926.00
<b>Total Purchased Professional and Technical Services</b>				<b>\$9,439.75</b>
<b>500 <u>Other Purchased Services</u></b>				
550 Printing and Binding				55.40
<b>Total Other Purchased Services</b>				<b>\$55.40</b>
<b>600 <u>Supplies</u></b>				
610 General Supplies				2,521.33
640 Books and Periodicals				440.00
650 Supplies & Fees – Technology Related				39,405.06
<b>Total Supplies</b>				<b>\$42,366.39</b>
<b>800 <u>Other Objects</u></b>				
810 Dues and Fees				1,014.00
<b>Total Other Objects</b>				<b>\$1,014.00</b>
<b>Total 2830 Staff Services</b>				<b>\$674,020.79</b>



LEA : 123467103      Souderton Area SD

Printed 11/9/2021 12:18:35 PM

General Fund (10)				
2831 Supervision of Staff Services	<u>Elementary</u>	<u>Secondary</u>	<u>Federal</u>	<u>Total</u>
100 <u>Personnel Services – Salaries</u>				
100 Personnel Services – Salaries				254,085.95
Total Personnel Services – Salaries				\$254,085.95
200 <u>Personnel Services – Employee Benefits</u>				
210 Group Insurance – Contracted Provider				1,272.35
220 Social Security Contributions				16,700.34
230 PSERS Retirement Contributions				82,622.64
250 Unemployment Compensation				495.19
260 Workers' Compensation				679.88
270 Group Insurance – Self-Insurance				29,358.25
291 Other Retirement Plans				10,450.00
Total Personnel Services – Employee Benefits				\$141,578.65
300 <u>Purchased Professional and Technical Services</u>				
329 Professional Educational Services – Other				4,513.75
Total Purchased Professional and Technical Services				\$4,513.75
500 <u>Other Purchased Services</u>				
550 Printing and Binding				55.40
Total Other Purchased Services				\$55.40
600 <u>Supplies</u>				
610 General Supplies				2,521.33
640 Books and Periodicals				440.00
650 Supplies & Fees – Technology Related				39,405.06
Total Supplies				\$42,366.39
800 <u>Other Objects</u>				
810 Dues and Fees				1,014.00
Total Other Objects				\$1,014.00
Total 2831 Supervision of Staff Services				\$443,614.14

LEA : 123467103     Souderton Area SD

Printed 11/9/2021 12:18:35 PM

General Fund (10)

2834 Staff Development Services – Non-Instructional, Certified Staff Only	<u>Elementary</u>	<u>Secondary</u>	<u>Federal</u>	<u>Total</u>
200 <u>Personnel Services – Employee Benefits</u>				
240 Tuition Reimbursement				3,096.00
Total Personnel Services – Employee Benefits				\$3,096.00
300 <u>Purchased Professional and Technical Services</u>				
360 Employee Training and Development Services				4,437.00
Total Purchased Professional and Technical Services				\$4,437.00
Total 2834 Staff Development Services – Non-Instructional, Certified Staff Only				\$7,533.00

LEA : 123467103     Souderton Area SD

Printed 11/9/2021 12:18:35 PM

General Fund (10)

2835 Health Services

	<u>Elementary</u>	<u>Secondary</u>	<u>Federal</u>	<u>Total</u>
<b>100 <u>Personnel Services – Salaries</u></b>				
100 Personnel Services – Salaries				40,238.22
<b>Total Personnel Services – Salaries</b>				<b>\$40,238.22</b>
<b>200 <u>Personnel Services – Employee Benefits</u></b>				
220 Social Security Contributions				2,871.97
230 PSERS Retirement Contributions				13,886.17
250 Unemployment Compensation				9.60
260 Workers' Compensation				217.22
270 Group Insurance – Self-Insurance				17,114.50
<b>Total Personnel Services – Employee Benefits</b>				<b>\$34,099.46</b>
<b>Total 2835 Health Services</b>				<b>\$74,337.68</b>

LEA : 123467103     Souderton Area SD

Printed 11/9/2021 12:18:35 PM

General Fund (10)

2836 Staff Development Services – Non-Instructional, Non-Certified Staff Only	<u>Elementary</u>	<u>Secondary</u>	<u>Federal</u>	<u>Total</u>
200 <u>Personnel Services – Employee Benefits</u>				
240 Tuition Reimbursement				13,309.00
Total Personnel Services – Employee Benefits				\$13,309.00
300 <u>Purchased Professional and Technical Services</u>				
360 Employee Training and Development Services				489.00
Total Purchased Professional and Technical Services				\$489.00
Total 2836 Staff Development Services – Non-Instructional, Non-Certified Staff Only				\$13,798.00

LEA : 123467103     Souderton Area SD

Printed 11/9/2021 12:18:35 PM

General Fund (10)

2839 Other Staff Services	<u>Elementary</u>	<u>Secondary</u>	<u>Federal</u>	<u>Total</u>
100 <u>Personnel Services – Salaries</u>				
100 Personnel Services – Salaries				75,867.39
Total Personnel Services – Salaries				\$75,867.39
200 <u>Personnel Services – Employee Benefits</u>				
220 Social Security Contributions				5,299.22
230 PSERS Retirement Contributions				24,944.43
250 Unemployment Compensation				26.26
260 Workers' Compensation				407.92
270 Group Insurance – Self-Insurance				28,192.75
Total Personnel Services – Employee Benefits				\$58,870.58
Total 2839 Other Staff Services				\$134,737.97

LEA : 123467103     Souderton Area SD

Printed 11/9/2021 12:18:35 PM

General Fund (10)

2840 Data Processing Services	Elementary	Secondary	Federal	Total
<b>100 Personnel Services – Salaries</b>				
100 Personnel Services – Salaries				345,912.70
<b>Total Personnel Services – Salaries</b>				<b>\$345,912.70</b>
<b>200 Personnel Services – Employee Benefits</b>				
210 Group Insurance – Contracted Provider				2,123.56
220 Social Security Contributions				25,537.24
230 PSERS Retirement Contributions				116,635.93
250 Unemployment Compensation				334.93
260 Workers' Compensation				1,432.26
270 Group Insurance – Self-Insurance				65,176.75
291 Other Retirement Plans				7,511.64
<b>Total Personnel Services – Employee Benefits</b>				<b>\$218,752.31</b>
<b>300 Purchased Professional and Technical Services</b>				
330 Other Professional Services				49,484.21
340 Technical Services				43,598.40
<b>Total Purchased Professional and Technical Services</b>				<b>\$93,082.61</b>
<b>400 Purchased Property Services</b>				
430 Repairs and Maintenance Services				18,781.02
<b>Total Purchased Property Services</b>				<b>\$18,781.02</b>
<b>500 Other Purchased Services</b>				
530 Communications				448,735.26
550 Printing and Binding				6.25
580 Travel				116.73
<b>Total Other Purchased Services</b>				<b>\$448,858.24</b>
<b>600 Supplies</b>				
610 General Supplies			1,295,225.00	1,565,387.89
650 Supplies & Fees – Technology Related				725,541.21
<b>Total Supplies</b>			<b>\$1,295,225.00</b>	<b>\$2,290,929.10</b>
<b>700 Property</b>				
758 Capitalized Technology Software - Original				88,200.00
766 Capitalized Technology Equipment – Replacement				100,387.23
768 Capitalized Technology Software - Replacement				6,892.21
<b>Total Property</b>				<b>\$195,479.44</b>
<b>800 Other Objects</b>				
810 Dues and Fees				1,000.00
<b>Total Other Objects</b>				<b>\$1,000.00</b>
<b>Total 2840 Data Processing Services</b>			<b>\$1,295,225.00</b>	<b>\$3,612,795.42</b>

LEA : 123467103     Souderton Area SD

Printed 11/9/2021 12:18:35 PM

General Fund (10)

2900 Other Support Services	<u>Elementary</u>	<u>Secondary</u>	<u>Federal</u>	<u>Total</u>
500 <u>Other Purchased Services</u>				
595 IU Payments By Withholding				83,381.87
Total Other Purchased Services				\$83,381.87
Total 2900 Other Support Services				\$83,381.87

LEA : 123467103     Souderton Area SD

Printed 11/9/2021 12:18:35 PM

General Fund (10)

2910 Support Services Not Listed Elsewhere In the 2000 Series

Elementary                      Secondary                      Federal                      Total

500 Other Purchased Services

595 IU Payments By Withholding 83,381.87

**Total Other Purchased Services \$83,381.87**

**Total 2910 Support Services Not Listed Elsewhere In the 2000 Series \$83,381.87**



LEA : 123467103      Souderton Area SD

Printed 11/9/2021 12:18:40 PM

General Fund (10)

3000 Operation of Non-Instructional Services		<u>Total</u>
100 <u>Personnel Services – Salaries</u>		
100 Personnel Services – Salaries		706,791.23
Total Personnel Services – Salaries		\$706,791.23
200 <u>Personnel Services – Employee Benefits</u>		
210 Group Insurance – Contracted Provider		68.04
220 Social Security Contributions		53,647.98
230 PSERS Retirement Contributions		193,103.67
250 Unemployment Compensation		364.93
260 Workers' Compensation		3,647.95
270 Group Insurance – Self-Insurance		44,025.00
291 Other Retirement Plans		1,500.00
Total Personnel Services – Employee Benefits		\$296,357.57
300 <u>Purchased Professional and Technical Services</u>		
330 Other Professional Services		4,231.00
390 Other Purchased Professional and Technical Services		42,764.20
Total Purchased Professional and Technical Services		\$46,995.20
400 <u>Purchased Property Services</u>		
430 Repairs and Maintenance Services		32,337.83
440 Rentals		10,345.00
Total Purchased Property Services		\$42,682.83
500 <u>Other Purchased Services</u>		
510 Student Transportation Services		81,615.21
520 Insurance – General		7,207.00
550 Printing and Binding		54.50
580 Travel		1,411.09
599 Other Miscellaneous Purchased Services		1,372.00
Total Other Purchased Services		\$91,659.80
600 <u>Supplies</u>		
610 General Supplies		121,141.05
630 Food		523.68
640 Books and Periodicals		4,400.32
650 Supplies & Fees – Technology Related		3,596.75
Total Supplies		\$129,661.80
700 <u>Property</u>		
752 Capital Equipment – Original and Additional		22,028.40
Total Property		\$22,028.40
800 <u>Other Objects</u>		
810 Dues and Fees		22,616.92
890 Miscellaneous Expenditures		81,437.96
Total Other Objects		\$104,054.88
Total 3000 Operation of Non-Instructional Services		\$1,440,231.71

LEA : 123467103     Souderton Area SD

Printed 11/9/2021 12:18:40 PM

General Fund (10)

3200 Student Activities

	<u>Elementary</u>	<u>Secondary</u>	<u>Federal</u>	<u>Total</u>
<b>100 <u>Personnel Services – Salaries</u></b>				
100 Personnel Services – Salaries				706,791.23
<b>Total Personnel Services – Salaries</b>				<b>\$706,791.23</b>
<b>200 <u>Personnel Services – Employee Benefits</u></b>				
210 Group Insurance – Contracted Provider				68.04
220 Social Security Contributions				53,647.98
230 PSERS Retirement Contributions				193,103.67
250 Unemployment Compensation				364.93
260 Workers' Compensation				3,647.95
270 Group Insurance – Self-Insurance				44,025.00
291 Other Retirement Plans				1,500.00
<b>Total Personnel Services – Employee Benefits</b>				<b>\$296,357.57</b>
<b>300 <u>Purchased Professional and Technical Services</u></b>				
330 Other Professional Services				4,231.00
390 Other Purchased Professional and Technical Services				42,764.20
<b>Total Purchased Professional and Technical Services</b>				<b>\$46,995.20</b>
<b>400 <u>Purchased Property Services</u></b>				
430 Repairs and Maintenance Services				32,337.83
440 Rentals				10,345.00
<b>Total Purchased Property Services</b>				<b>\$42,682.83</b>
<b>500 <u>Other Purchased Services</u></b>				
510 Student Transportation Services				81,615.21
520 Insurance – General				7,207.00
550 Printing and Binding				54.50
580 Travel				1,411.09
599 Other Miscellaneous Purchased Services				1,372.00
<b>Total Other Purchased Services</b>				<b>\$91,659.80</b>
<b>600 <u>Supplies</u></b>				
610 General Supplies				118,427.31
630 Food				523.68
640 Books and Periodicals				37.22
650 Supplies & Fees – Technology Related				3,596.75
<b>Total Supplies</b>				<b>\$122,584.96</b>
<b>700 <u>Property</u></b>				
752 Capital Equipment – Original and Additional				22,028.40
<b>Total Property</b>				<b>\$22,028.40</b>
<b>800 <u>Other Objects</u></b>				
810 Dues and Fees				22,616.92
890 Miscellaneous Expenditures				49,187.96
<b>Total Other Objects</b>				<b>\$71,804.88</b>
<b>Total 3200 Student Activities</b>				<b>\$1,400,904.87</b>

LEA : 123467103     Souderton Area SD

Printed 11/9/2021 12:18:40 PM

General Fund (10)

3300 Community Services

	<u>Elementary</u>	<u>Secondary</u>	<u>Federal</u>	<u>Total</u>
600 <u>Supplies</u>				
610 General Supplies			2,713.74	2,713.74
640 Books and Periodicals			4,363.10	4,363.10
<b>Total Supplies</b>			<b>\$7,076.84</b>	<b>\$7,076.84</b>
<b>Total 3300 Community Services</b>			<b>\$7,076.84</b>	<b>\$7,076.84</b>

Page 132

LEA : 123467103     Souderton Area SD

Printed 11/9/2021 12:18:47 PM

General Fund (10)

4000 Facilities Acquisition, Construction and Improvement Services		<u>Total</u>
300 <u>Purchased Professional and Technical Services</u>		
330 Other Professional Services		153,122.33
Total Purchased Professional and Technical Services		\$153,122.33
400 <u>Purchased Property Services</u>		
450 Construction Services		661,544.25
Total Purchased Property Services		\$661,544.25
Total 4000 Facilities Acquisition, Construction and Improvement Services		\$814,666.58

LEA : 123467103     Souderton Area SD

Printed 11/9/2021 12:18:47 PM

General Fund (10)

4400 Architecture and Engineering Services / Educational Specifications – Improvements	<u>Elementary</u>	<u>Secondary</u>	<u>Federal</u>	<u>Total</u>
300 <u>Purchased Professional and Technical Services</u>				
330 Other Professional Services				153,122.33
Total Purchased Professional and Technical Services				\$153,122.33
Total 4400 Architecture and Engineering Services / Educational Specifications – Improvements				\$153,122.33

LEA : 123467103     Souderton Area SD

Printed 11/9/2021 12:18:47 PM

General Fund (10)

4600 Existing Building Improvement Services	<u>Elementary</u>	<u>Secondary</u>	<u>Federal</u>	<u>Total</u>
400 <u>Purchased Property Services</u>				
450 Construction Services				661,544.25
Total Purchased Property Services				\$661,544.25
Total 4600 Existing Building Improvement Services				\$661,544.25

LEA : 123467103     Souderton Area SD

Printed 11/9/2021 12:18:54 PM

General Fund (10)	
5000 Other Expenditures and Financing Uses	<u>Total</u>
800 <u>Other Objects</u>	
830 Interest	1,422,855.61
Total Other Objects	\$1,422,855.61
900 <u>Other Uses of Funds</u>	
910 Redemption of Principal	7,885,000.00
Total Other Uses of Funds	\$7,885,000.00
Total 5000 Other Expenditures and Financing Uses	\$9,307,855.61



LEA : 123467103     Souderton Area SD

Printed 11/9/2021 12:18:54 PM

General Fund (10)

5100 Debt Service / Other Expenditures and Financing Uses	<u>Elementary</u>	<u>Secondary</u>	<u>Federal</u>	<u>Total</u>
800 <u>Other Objects</u>				
830 Interest				1,422,855.61
Total Other Objects				\$1,422,855.61
900 <u>Other Uses of Funds</u>				
910 Redemption of Principal				7,885,000.00
Total Other Uses of Funds				\$7,885,000.00
Total 5100 Debt Service / Other Expenditures and Financing Uses				\$9,307,855.61

LEA : 123467103     Souderton Area SD

Printed 11/9/2021 12:18:54 PM

General Fund (10)

5110 Debt Service	<u>Elementary</u>	<u>Secondary</u>	<u>Federal</u>	<u>Total</u>
800 <u>Other Objects</u>				
830 Interest				1,422,855.61
Total Other Objects				\$1,422,855.61
900 <u>Other Uses of Funds</u>				
910 Redemption of Principal				7,885,000.00
Total Other Uses of Funds				\$7,885,000.00
Total 5110 Debt Service				\$9,307,855.61

LEA : 123467103     Souderton Area SD

Printed 11/9/2021 12:18:49 PM

Other Capital Projects Fund (39)

4000 Facilities Acquisition, Construction and Improvement Services

Total

300 Purchased Professional and Technical Services

330 Other Professional Services	486,837.25
---------------------------------	------------

<b>Total Purchased Professional and Technical Services</b>	<b>\$486,837.25</b>
--	---------------------

400 Purchased Property Services

430 Repairs and Maintenance Services	50,095.00
--------------------------------------	-----------

450 Construction Services	28,685.00
---------------------------	-----------

<b>Total Purchased Property Services</b>	<b>\$78,780.00</b>
--	--------------------

<b>Total 4000 Facilities Acquisition, Construction and Improvement Services</b>	<b>\$565,617.25</b>
---	---------------------

LEA : 123467103     Souderton Area SD

Printed 11/9/2021 12:18:49 PM

Other Capital Projects Fund (39)

4200 Existing Site Improvement Services

<u>Elementary</u>	<u>Secondary</u>	<u>Federal</u>	<u>Total</u>
-------------------	------------------	----------------	--------------

300 Purchased Professional and Technical Services

330 Other Professional Services			449,084.00
---------------------------------	--	--	------------

<b>Total Purchased Professional and Technical Services</b>			<b>\$449,084.00</b>
--	--	--	---------------------

<b>Total 4200 Existing Site Improvement Services</b>			<b>\$449,084.00</b>
--	--	--	---------------------

LEA : 123467103     Souderton Area SD

Printed 11/9/2021 12:18:49 PM

Other Capital Projects Fund (39)

4600 Existing Building Improvement Services	<u>Elementary</u>	<u>Secondary</u>	<u>Federal</u>	<u>Total</u>
300 <u>Purchased Professional and Technical Services</u>				
330 Other Professional Services				37,753.25
Total Purchased Professional and Technical Services				\$37,753.25
400 <u>Purchased Property Services</u>				
430 Repairs and Maintenance Services				50,095.00
450 Construction Services				28,685.00
Total Purchased Property Services				\$78,780.00
Total 4600 Existing Building Improvement Services				\$116,533.25

LEA : 123467103     Souderton Area SD

Printed 11/9/2021 12:18:56 PM

Other Capital Projects Fund (39)

5000 Other Expenditures and Financing Uses

Total

900 Other Uses of Funds

910 Redemption of Principal	500,000.00
-----------------------------	------------

Total Other Uses of Funds	\$500,000.00
---------------------------	--------------

Total 5000 Other Expenditures and Financing Uses	\$500,000.00
--	--------------

LEA : 123467103     Souderton Area SD

Printed 11/9/2021 12:18:56 PM

Other Capital Projects Fund (39)

5100 Debt Service / Other Expenditures and Financing Uses	<u>Elementary</u>	<u>Secondary</u>	<u>Federal</u>	<u>Total</u>
900 <u>Other Uses of Funds</u>				
910 Redemption of Principal				500,000.00
Total Other Uses of Funds				\$500,000.00
Total 5100 Debt Service / Other Expenditures and Financing Uses				\$500,000.00

<u>Elementary</u>	<u>Secondary</u>	<u>Federal</u>	<u>Total</u>
-------------------	------------------	----------------	--------------

<u>Elementary</u>	<u>Secondary</u>	<u>Federal</u>	<u>Total</u>
-------------------	------------------	----------------	--------------

<u>Elementary</u>	<u>Secondary</u>	<u>Federal</u>	<u>Total</u>
-------------------	------------------	----------------	--------------

500,000.00

**\$500,000.00**

**\$500,000.00**



LEA : 123467103     Souderton Area SD

Printed 11/9/2021 12:19:18 PM

	<u>General Fund(10)</u>	<u>Student Sponsored Activity Fund(21)</u>	<u>Public Purpose Trust(27)</u>	<u>Other Compt Approved (28)</u>	<u>Athletic / Activity(29)</u>
<b>1000 <u>Instruction</u></b>					
1100 Regular Programs - Elementary / Secondary	57,504,732.49				
1200 Special Programs - Elementary / Secondary	24,020,813.57				
1300 Vocational Education	1,856,597.38				
1400 Other Instructional Programs - Elementary / Secondary	413,843.34				
1500 Nonpublic School Programs	16,738.76				
1600 Adult Education Programs	118,810.15				
<b>Total Instruction</b>	<b>\$83,931,535.69</b>				
<b>2000 <u>Support Services</u></b>					
2100 Support Services - Students	5,138,186.98				
2200 Support Services - Instructional Staff	4,998,796.63				
2300 Support Services - Administration	5,361,895.37				
2400 Support Services - Pupil Health	1,456,412.88				
2500 Support Services - Business	1,014,857.60				
2600 Operation and Maintenance of Plant Services	10,241,599.97				
2700 Student Transportation Services	7,235,477.21				
2800 Support Services - Central	4,493,367.88				
2900 Other Support Services	83,381.87				
<b>Total Support Services</b>	<b>\$40,023,976.39</b>				
<b>3000 <u>Operation of Non-Instructional Services</u></b>					
3200 Student Activities	1,400,904.87				
3300 Community Services	7,076.84				
3400 Scholarships and Awards	32,250.00				
<b>Total Operation of Non-Instructional Services</b>	<b>\$1,440,231.71</b>				
<b>4000 <u>Facilities Acquisition, Construction and Improvement Services</u></b>					
4200 Existing Site Improvement Services					
4400 Architecture and Engineering Services / Educational Specifications - Improvements	153,122.33				
4600 Existing Building Improvement Services	661,544.25				
<b>Total Facilities Acquisition, Construction and Improvement Services</b>	<b>\$814,666.58</b>				
<b>5000 <u>Other Expenditures and Financing Uses</u></b>					
5100 Debt Service / Other Expenditures and Financing Uses	9,307,855.61				
<b>Total Other Expenditures and Financing Uses</b>	<b>\$9,307,855.61</b>				
<b>TOTAL ACTUAL EXPENDITURES &amp; OTHER FINANCING USES</b>	<b>\$135,518,265.98</b>				

LEA : 123467103     Souderton Area SD

Printed 11/9/2021 12:19:18 PM

	<u>Capital Reserve (690.</u>	<u>Capital Reserve (1431)(32)</u>	<u>Other Capital Projects</u>	<u>Debt Service(40)</u>	<u>Permanent(90)</u>
	<u>1850)(31)</u>		<u>Fund(39)</u>		
<b>1000 <u>Instruction</u></b>					
1100 Regular Programs - Elementary / Secondary					
1200 Special Programs - Elementary / Secondary					
1300 Vocational Education					
1400 Other Instructional Programs - Elementary / Secondary					
1500 Nonpublic School Programs					
1600 Adult Education Programs					
<b>Total Instruction</b>					
<b>2000 <u>Support Services</u></b>					
2100 Support Services - Students					
2200 Support Services - Instructional Staff					
2300 Support Services - Administration					
2400 Support Services - Pupil Health					
2500 Support Services - Business					
2600 Operation and Maintenance of Plant Services					
2700 Student Transportation Services					
2800 Support Services - Central					
2900 Other Support Services					
<b>Total Support Services</b>					
<b>3000 <u>Operation of Non-Instructional Services</u></b>					
3200 Student Activities					
3300 Community Services					
3400 Scholarships and Awards					
<b>Total Operation of Non-Instructional Services</b>					
<b>4000 <u>Facilities Acquisition, Construction and Improvement Services</u></b>					
4200 Existing Site Improvement Services			449,084.00		
4400 Architecture and Engineering Services / Educational Specifications - Improvements					
4600 Existing Building Improvement Services			116,533.25		
<b>Total Facilities Acquisition, Construction and Improvement Services</b>			<b>\$565,617.25</b>		
<b>5000 <u>Other Expenditures and Financing Uses</u></b>					
5100 Debt Service / Other Expenditures and Financing Uses			500,000.00		
<b>Total Other Expenditures and Financing Uses</b>			<b>\$500,000.00</b>		
<b>TOTAL ACTUAL EXPENDITURES &amp; OTHER FINANCING USES</b>			<b>\$1,065,617.25</b>		

LEA : 123467103     Souderton Area SD

Printed 11/9/2021 12:19:18 PM

	<u>Total</u>
<b>1000 <u>Instruction</u></b>	
1100 Regular Programs - Elementary / Secondary	57,504,732.49
1200 Special Programs - Elementary / Secondary	24,020,813.57
1300 Vocational Education	1,856,597.38
1400 Other Instructional Programs - Elementary / Secondary	413,843.34
1500 Nonpublic School Programs	16,738.76
1600 Adult Education Programs	118,810.15
<b>Total Instruction</b>	<b>\$83,931,535.69</b>
<b>2000 <u>Support Services</u></b>	
2100 Support Services - Students	5,138,186.98
2200 Support Services - Instructional Staff	4,998,796.63
2300 Support Services - Administration	5,361,895.37
2400 Support Services - Pupil Health	1,456,412.88
2500 Support Services - Business	1,014,857.60
2600 Operation and Maintenance of Plant Services	10,241,599.97
2700 Student Transportation Services	7,235,477.21
2800 Support Services - Central	4,493,367.88
2900 Other Support Services	83,381.87
<b>Total Support Services</b>	<b>\$40,023,976.39</b>
<b>3000 <u>Operation of Non-Instructional Services</u></b>	
3200 Student Activities	1,400,904.87
3300 Community Services	7,076.84
3400 Scholarships and Awards	32,250.00
<b>Total Operation of Non-Instructional Services</b>	<b>\$1,440,231.71</b>
<b>4000 <u>Facilities Acquisition, Construction and Improvement Services</u></b>	
4200 Existing Site Improvement Services	449,084.00
4400 Architecture and Engineering Services / Educational Specifications - Improvements	153,122.33
4600 Existing Building Improvement Services	778,077.50
<b>Total Facilities Acquisition, Construction and Improvement Services</b>	<b>\$1,380,283.83</b>
<b>5000 <u>Other Expenditures and Financing Uses</u></b>	
5100 Debt Service / Other Expenditures and Financing Uses	9,807,855.61
<b>Total Other Expenditures and Financing Uses</b>	<b>\$9,807,855.61</b>
<b>TOTAL ACTUAL EXPENDITURES &amp; OTHER FINANCING USES</b>	<b>\$136,583,883.23</b>

LEA : 123467103      Souderton Area SD

Printed 11/9/2021 12:19:27 PM

PSERS Salary Data (Salary Data should relate to the General Fund only)

Amount	Description	Amount
	Total Salary Base for salaries subject to PSERS withholding	56,686,772.51
	Total Federally Funded salaries subject to PSERS withholding	3,010,504.28

Title I Expenditure Data

Amount	Description	Amount
	Expenditures Funded with Current Title I Funds	322,393.76
	Expenditures Funded with Carry over Title I Funds	11,752.38
Total Title I Expenditure Data		\$334,146.14

Title IV Revenue Data

Amount	Description	Amount
	Revenue from Title IV-A-1: Student Support and Academic Enrichment Grants	10,381.00
	Revenue from Title IV-B: 21st Century Community Learning Centers	

Title V Revenue Data

Amount	Description	Amount
	Revenue from Title V-B-2: Rural and Low-Income School Programs	
	Revenue from Title V-B-1: Small Rural School Achievement (Directly from the Federal Govt)	

1 .	<u>Current Special Education Expenditures/Expenses within Functions 1000, 2000, 3100, and 3200</u>	1,858,742.56
2 .	<u>Current Special Education Expenditures for Instruction Functions 1000 and 3200</u>	1,858,242.56
3 .	<u>Current Special Education Expenditures for Pupil Support Services Function 2100</u>	
4 .	<u>Current Special Education Expenditures for Instructional Staff Support Services Function 2200</u>	500.00
5 .	<u>Current Special Education Expenditures for Student Transportation Support Services Function 2700</u>	

**Note:** Do not report total Special Education expenditures for the functions listed above. Refer to the AFR User Manual for specific instructions on Funds/Functions/Objects to be included and excluded on each line.

Benefits for Staff Relative to Collective  
Bargaining Agreements

	OBJECT	COVERED	NOT COVERED	TOTAL
10 General Fund				
	211 Medical Insurance			
	212 Dental Insurance			
	215 Eye Care Insurance			
	216 Prescription Insurance			
	271 Self-Insurance Medical Benefits	8,246,561.94	1,013,344.75	9,259,906.69
	272 Self-Insurance Dental Benefits	498,877.46	46,333.50	545,210.96
	275 Self-Insurance Eye Care Benefits	83,015.58	10,013.25	93,028.83
	276 Self-Insurance Prescription Benefits			
	FUND TOTAL	\$8,828,454.98	\$1,069,691.50	\$9,898,146.48
50 Enterprise Fund				
	211 Medical Insurance			
	212 Dental Insurance			
	215 Eye Care Insurance			
	216 Prescription Insurance			
	271 Self-Insurance Medical Benefits	19,652.28	130,316.83	149,969.11
	272 Self-Insurance Dental Benefits	1,334.52	7,965.13	9,299.65
	275 Self-Insurance Eye Care Benefits	234.96	1,172.16	1,407.12
	276 Self-Insurance Prescription Benefits			
	FUND TOTAL	\$21,221.76	\$139,454.12	\$160,675.88
60 Internal Service Fund	No Self Insurance data to report			
	211 Medical Insurance			
	212 Dental Insurance			
	215 Eye Care Insurance			
	216 Prescription Insurance			
	271 Self-Insurance Medical Benefits			
	272 Self-Insurance Dental Benefits			
	275 Self-Insurance Eye Care Benefits			
	276 Self-Insurance Prescription Benefits			
	FUND TOTAL			
Total of All Funds		\$8,849,676.74	\$1,209,145.62	\$10,058,822.36

LEA : 123467103     Souderton Area SD

Printed 11/9/2021 12:19:37 PM

Function	Special Education (Prior Year)	Nonspecial Education (Prior Year)	Total (Prior Year)	Special Education (Current Year)	Nonspecial Education (Current Year)	Total (Current Year)
2120 Guidance Services	393,639.20	1,920,524.21	2,314,163.41	421,230.06	1,963,991.14	2,385,221.20
2140 Psychological Services	180,254.22	879,441.36	1,059,695.58	215,526.10	1,004,893.52	1,220,419.62
2150 Speech Pathology and Audiology Services						
2160 Social Work Services	235,530.63	235,530.63	471,061.26	246,796.25	246,796.25	493,592.50
2260 Instruction and Curriculum Development Services	199,216.81	971,957.84	1,171,174.65	239,715.69	1,400,803.50	1,640,519.19
2350 Legal and Accounting Services	34,742.86	169,506.76	204,249.62	21,131.58	98,526.27	119,657.85
2420 Medical Services					243,616.91	243,616.91
2440 Nursing Services	193,984.97	946,432.25	1,140,417.22	200,415.89	1,008,054.60	1,208,470.49
2700 Student Transportation Services	2,606,455.62	4,483,840.33	7,090,295.95	2,658,864.48	4,576,612.73	7,235,477.21
Total	\$3,843,824.31	\$9,607,233.38	\$13,451,057.69	\$4,003,680.05	\$10,543,294.92	\$14,546,974.97

LEA : 123467103     Souderton Area SD

Printed 11/9/2021 12:19:41 PM

(PRINCIPAL AMOUNTS ONLY)

**GOVERNMENTAL FUNDS/ ACTIVITIES**

	Short-Term Borrowing	General Obligation Bonds/Notes	Authority Building Obligations	Other Long-Term Debt	Other Post- Employment Benefits (OPEB)	Compensated Absences	Net Pension Liability	Total
1. Debt at Beginning of Fiscal Year		43,600,000.00			13,481,189.00	2,851,063.00	177,383,839.00	237,316,091.00
2. Additional Debt Incurred During Year					222,356.00	103,805.00	9,794,685.00	10,120,846.00
3. Retirements and Repayments		8,385,000.00				33,297.00		8,418,297.00
4. Debt at End of Fiscal Year		35,215,000.00			13,703,545.00	2,921,571.00	187,178,524.00	239,018,640.00
5. Accreted Interest at End Of Fiscal Year								
6. Total Debt and Accreted Interest		35,215,000.00			13,703,545.00	2,921,571.00	187,178,524.00	239,018,640.00
7. Current Portion P&I - Due within 1 year		9,808,911.26				174,292.00		9,983,203.26
8. Interest Paid during current fiscal year		1,422,855.61						1,422,855.61

(PRINCIPAL AMOUNTS ONLY)

**PROPRIETARY FUNDS**

	Short-Term Borrowing	General Obligation Bonds/Notes	Authority Building Obligations	Other Long-Term Debt	Other Post- Employment Benefits (OPEB)	Compensated Absences	Net Pension Liability	Total
1. Debt at Beginning of Fiscal Year					139,807.00		2,931,850.00	3,071,657.00
2. Additional Debt Incurred During Year					16,091.00		146,417.00	162,508.00
3. Retirements and Repayments								
4. Debt at End of Fiscal Year					155,898.00		3,078,267.00	3,234,165.00
5. Accreted Interest at End Of Fiscal Year								
6. Total Debt and Accreted Interest					155,898.00		3,078,267.00	3,234,165.00
7. Current Portion P&I - Due within 1 year								
8. Interest Paid during current fiscal year								



LEA : 123467103     Souderton Area SD

Printed 11/9/2021 12:19:41 PM

Total Principal and Interest Payments Made by Your School - All Funds

Function	Fund		Principal (910)	Principal (920)	Interest (830)	Total (Principal +Interest)	Misc Other Uses (990)
5110	10	General Fund	7,885,000.00		1,422,855.61	9,307,855.61	
5110	20	Special Revenue Funds					
5110	30	Capital Projects Funds	500,000.00			500,000.00	
5110	40	Debt Service Fund					
5110	90	Permanent Fund					
5120	10	General Fund					
5120	20	Special Revenue Funds					
5120	30	Capital Projects Funds					
5120	40	Debt Service Fund					
Total Debt Payments - Governmental Funds			\$8,385,000.00		\$1,422,855.61	\$9,807,855.61	

Function	Fund		Principal (910)	Principal (920)	Interest (830)	Total (Principal +Interest)
5110	50	Enterprise Fund				
5110	60	Internal Service Fund				
5120	50	Enterprise Fund				
5120	60	Internal Service Fund				
Total Debt Payments - Proprietary Funds						

LEA : 123467103     Souderton Area SD

Printed 11/9/2021 12:19:41 PM

**Debt Details**  
**Governmental Funds/ Activities**

Debt Category	Debt Issue Date (MM/YYYY)	Principal Amounts Only				Current Portion Due Within One Year (Principal and Interest)	Interest Paid During Fiscal Year
		Debt at Beginning of Fiscal Year	Additions	Reductions / Repayments	Debt at End of Fiscal Year		
General Obligation Bonds/Notes – CIB	11/2019	8,230,000.00		10,000.00	8,220,000.00	420,500.00	410,884.69
General Obligation Bonds/Notes – CIB	01/2017	17,975,000.00		3,405,000.00	14,570,000.00	4,044,612.50	669,525.00
General Obligation Bonds/Notes – CIB	01/2015	2,810,000.00		685,000.00	2,125,000.00	733,705.00	51,502.16
General Obligation Bonds/Notes – CIB	04/2015	5,145,000.00		4,040,000.00	1,105,000.00	1,116,050.00	96,100.00
General Obligation Bonds/Notes – CIB	01/2014	9,440,000.00		245,000.00	9,195,000.00	3,494,043.76	194,843.76
Compensated Absences		2,851,063.00	103,805.00	33,297.00	2,921,571.00	174,292.00	
Other Post-Employment Benefits (OPEB)		13,481,189.00	222,356.00		13,703,545.00		
Net Pension Liability		177,383,839.00	9,794,685.00		187,178,524.00		
<b>Totals for Debt Entered:</b>		<b>\$237,316,091.00</b>	<b>\$10,120,846.00</b>	<b>\$8,418,297.00</b>	<b>\$239,018,640.00</b>	<b>\$9,983,203.26</b>	<b>\$1,422,855.61</b>

**Bond Details**  
**Proprietary Funds**

Debt Category	Debt Issue Date (MM/YYYY)	Principal Amounts Only				Current Portion Due Within One Year (Principal and Interest)	Interest Paid During Fiscal Year
		Debt at Beginning of Fiscal Year	Additions	Reductions / Repayments	Debt at End of Fiscal Year		
Other Post-Employment Benefits (OPEB)		139,807.00	16,091.00		155,898.00		
Net Pension Liability		2,931,850.00	146,417.00		3,078,267.00		
<b>Totals for Debt Entered:</b>		<b>\$3,071,657.00</b>	<b>\$162,508.00</b>		<b>\$3,234,165.00</b>		

LEA : 123467103     Souderton Area SD

General Fund (10)

Section 1: Tuition/Purchased Services as Reported within Expenditure Detail	Amount
Tuition Reported in General Fund Expenditures 1000-560	10,974,634.92
Purchased Services in General Fund Expenditures 1000-594 and 1000-597	605.47
Section 1 Total	\$10,975,240.39

Section 2: Tuition Paid to Institution Types During Fiscal Year	Tuition Paid For Nonspecial Education	Tuition Paid For Special Education	Total
1 1306 Institutions			
2 Institutionalized Children's Programs			
3 Juveniles Incarcerated in Adult Facilities			
4 Residential Treatment Facilities		595,056.00	595,056.00
5 Other Local Education Agencies		3,883.44	3,883.44
6 Brick and Mortar Charter Schools	2,338,284.00	973,849.26	3,312,133.26
7 Cyber Charter Schools	1,066,871.57	571,889.44	1,638,761.01
8 Career and Technology Centers	1,856,597.38		1,856,597.38
9 Approved Private Schools		262,598.50	262,598.50
10 PA Chartered Schools for the Deaf and Blind			
11 Private Residential Rehabilitative Institutions	1,630,893.97	3,495.00	1,634,388.97
12 Juvenile Detention Centers			
13 Special Program Jointures			
14 Other Tuition Not Included Elsewhere In This Section		1,671,821.83	1,671,821.83
Section 2 Total	\$6,892,646.92	\$4,082,593.47	\$10,975,240.39

LEA : 123467103      Souderton Area SD

Printed 11/9/2021 12:19:52 PM

Food Service / Cafeteria Operations Fund (51)

3000 Operation of Non-Instructional Services

Total

100 Personnel Services – Salaries	733,903.19
<b>Total Personnel Services – Salaries</b>	<b>\$733,903.19</b>
200 Personnel Services – Employee Benefits	
210 Group Insurance – Contracted Provider	201.00
220 Social Security Contributions	54,255.00
230 PSERS Retirement Contributions	309,880.00
250 Unemployment Compensation	365.00
260 Workers' Compensation	3,944.00
270 Group Insurance – Self-Insurance	160,676.00
280 Other Post-Employment Benefits (OPEB)	694.00
291 Other Retirement Plans	61,015.00
<b>Total Personnel Services – Employee Benefits</b>	<b>\$591,030.00</b>
300 Purchased Professional and Technical Services	
330 Other Professional Services	7,947.00
340 Technical Services	2,898.00
<b>Total Purchased Professional and Technical Services</b>	<b>\$10,845.00</b>
400 Purchased Property Services	
430 Repairs and Maintenance Services	91,245.00
<b>Total Purchased Property Services</b>	<b>\$91,245.00</b>
500 Other Purchased Services	
530 Communications	1,456.00
<b>Total Other Purchased Services</b>	<b>\$1,456.00</b>
600 Supplies	
610 General Supplies	108,929.00
630 Food	937,509.00
640 Books and Periodicals	197.00
650 Supplies & Fees – Technology Related	18,494.00
<b>Total Supplies</b>	<b>\$1,065,129.00</b>
700 Property	
740 Depreciation	53,378.00
<b>Total Property</b>	<b>\$53,378.00</b>
800 Other Objects	
810 Dues and Fees	1,274.00
<b>Total Other Objects</b>	<b>\$1,274.00</b>
<b>Total 3000 Operation of Non-Instructional Services</b>	<b>\$2,548,260.19</b>

LEA : 123467103     Souderton Area SD

Printed 11/9/2021 12:19:52 PM

Food Service / Cafeteria Operations Fund (51)

3100 Food Services	<u>Elementary</u>	<u>Secondary</u>	<u>Federal</u>	<u>Total</u>
100 <u>Personnel Services – Salaries</u>				
100 Personnel Services – Salaries				733,903.19
Total Personnel Services – Salaries				\$733,903.19
200 <u>Personnel Services – Employee Benefits</u>				
210 Group Insurance – Contracted Provider				201.00
220 Social Security Contributions				54,255.00
230 PSERS Retirement Contributions				309,880.00
250 Unemployment Compensation				365.00
260 Workers' Compensation				3,944.00
270 Group Insurance – Self-Insurance				160,676.00
280 Other Post-Employment Benefits (OPEB)				694.00
291 Other Retirement Plans				61,015.00
Total Personnel Services – Employee Benefits				\$591,030.00
300 <u>Purchased Professional and Technical Services</u>				
330 Other Professional Services				7,947.00
340 Technical Services				2,898.00
Total Purchased Professional and Technical Services				\$10,845.00
400 <u>Purchased Property Services</u>				
430 Repairs and Maintenance Services				91,245.00
Total Purchased Property Services				\$91,245.00
500 <u>Other Purchased Services</u>				
530 Communications				1,456.00
Total Other Purchased Services				\$1,456.00
600 <u>Supplies</u>				
610 General Supplies				108,929.00
630 Food				937,509.00
640 Books and Periodicals				197.00
650 Supplies & Fees – Technology Related				18,494.00
Total Supplies				\$1,065,129.00
700 <u>Property</u>				
740 Depreciation				53,378.00
Total Property				\$53,378.00
800 <u>Other Objects</u>				
810 Dues and Fees				1,274.00
Total Other Objects				\$1,274.00
Total 3100 Food Services				\$2,548,260.19

LEA : 123467103      Souderton Area SD

Printed 11/9/2021 12:19:48 PM

Internal Service Fund (60)

2000 Support Services

Total

200	<u>Personnel Services – Employee Benefits</u>	
270	Group Insurance – Self-Insurance	11,310,100.21
Total Personnel Services – Employee Benefits		\$11,310,100.21
500	<u>Other Purchased Services</u>	
520	Insurance – General	1,010,522.52
Total Other Purchased Services		\$1,010,522.52
800	<u>Other Objects</u>	
810	Dues and Fees	412,693.20
Total Other Objects		\$412,693.20
Total 2000 Support Services		\$12,733,315.93

LEA : 123467103     Souderton Area SD

Printed 11/9/2021 12:19:48 PM

Internal Service Fund (60)

2800 Support Services – Central

Elementary                      Secondary                      Federal                      Total

200 <u>Personnel Services – Employee Benefits</u>				
270 Group Insurance – Self-Insurance				11,310,100.21
Total Personnel Services – Employee Benefits				\$11,310,100.21
500 <u>Other Purchased Services</u>				
520 Insurance – General				1,010,522.52
Total Other Purchased Services				\$1,010,522.52
800 <u>Other Objects</u>				
810 Dues and Fees				412,693.20
Total Other Objects				\$412,693.20
Total 2800 Support Services – Central				\$12,733,315.93

LEA : 123467103     Souderton Area SD

Printed 11/9/2021 12:19:48 PM

Internal Service Fund (60)

2830 Staff Services	<u>Elementary</u>	<u>Secondary</u>	<u>Federal</u>	<u>Total</u>
200 <u>Personnel Services – Employee Benefits</u>				
270 Group Insurance – Self-Insurance				11,310,100.21
Total Personnel Services – Employee Benefits				\$11,310,100.21
500 <u>Other Purchased Services</u>				
520 Insurance – General				1,010,522.52
Total Other Purchased Services				\$1,010,522.52
800 <u>Other Objects</u>				
810 Dues and Fees				412,693.20
Total Other Objects				\$412,693.20
Total 2830 Staff Services				\$12,733,315.93



LEA : 123467103     Souderton Area SD

Printed 11/9/2021 12:19:48 PM

Internal Service Fund (60)

2835 Health Services

	<u>Elementary</u>	<u>Secondary</u>	<u>Federal</u>	<u>Total</u>
<b>200 <u>Personnel Services – Employee Benefits</u></b>				
270 Group Insurance – Self-Insurance				11,310,100.21
<b>Total Personnel Services – Employee Benefits</b>				<b>\$11,310,100.21</b>
<b>500 <u>Other Purchased Services</u></b>				
520 Insurance – General				1,010,522.52
<b>Total Other Purchased Services</b>				<b>\$1,010,522.52</b>
<b>800 <u>Other Objects</u></b>				
810 Dues and Fees				412,693.20
<b>Total Other Objects</b>				<b>\$412,693.20</b>
<b>Total 2835 Health Services</b>				<b>\$12,733,315.93</b>

	<u>Food Service(51)</u>	<u>Child Care Operations(52)</u>	<u>Other Enterprise(58)</u>	<u>Internal Service(60)</u>	<u>Total</u>
<b>2000 <u>Support Services</u></b>					
2800 Support Services - Central				12,733,315.93	12,733,315.93
<b>Total Support Services</b>				<b>\$12,733,315.93</b>	<b>\$12,733,315.93</b>
<b>3000 <u>Operation of Non-Instructional Services</u></b>					
3100 Food Services	2,548,260.19				2,548,260.19
<b>Total Operation of Non-Instructional Services</b>	<b>\$2,548,260.19</b>				<b>\$2,548,260.19</b>
<b>TOTAL ACTUAL EXPENDITURES &amp; OTHER FINANCING USES</b>	<b>\$2,548,260.19</b>			<b>\$12,733,315.93</b>	<b>\$15,281,576.12</b>

LEA : 123467103     Souderton Area SD

Printed 11/9/2021 12:20:08 PM

Fund	School	School Number	Local Personnel	Local Nonpersonnel	State Personnel	State Nonpersonnel	Federal Personnel	Federal Nonpersonnel	Total	Explanation
10										
	E M Crouthamel El Sch	3357	5,464,815.99	2,138,077.13	10,036.62	32,650.87	338,505.16	97,399.68	8,081,485.45	
	Franconia El Sch	3266	6,221,606.10	3,222,109.14	13,557.15	44,103.79	373,230.45	131,564.49	10,006,171.12	
	Indian Crest MS	8062	11,055,175.50	5,058,699.33	22,945.25	74,644.91	408,933.51	222,670.65	16,843,069.15	
	Indian Valley MS	4722	10,545,835.62	5,806,368.89	24,983.46	81,275.53	441,267.90	242,450.28	17,142,181.68	
	Oak Ridge El Sch	7262	6,772,345.44	3,045,812.43	14,205.67	46,213.54	283,588.17	137,858.01	10,300,023.26	
	Salford Hills El Sch	8282	6,522,995.07	2,944,564.77	13,526.27	44,003.32	263,580.40	131,264.80	9,919,934.63	
	Souderton Area SHS	3354	27,543,755.85	14,020,524.85	62,412.32	203,038.17	965,418.92	605,676.16	43,400,826.27	
	Vernfield El Sch	7752	6,540,207.84	3,100,776.39	14,298.32	46,514.93	250,891.20	138,757.08	10,091,445.76	
	West Broad Street El Sch	4900	6,609,187.20	2,562,593.06	11,982.18	38,980.11	394,105.88	116,280.23	9,733,128.66	
Total			87,275,924.61	41,899,525.99	187,947.24	611,425.17	3,719,521.59	1,823,921.38	135,518,265.98	